

À des fins de recherche uniquement

Anticorps Polyclonal de lapin anti- HEXIM1



Numéro de catalogue: 15676-1-AP

Phare

10 Publications

Informations de base

Numéro de catalogue:

15676-1-AP

Taille:

150ul, Concentration: 700 µg/ml by Nanodrop;

Hôte:

Lapin

Isotype:

IgG

Immunogen Catalog Number:

AG8144

Numéro d'acquisition GenBank:

BC006460

Identification du gène (NCBI):

10614

Nom complet:

hexamethylene bis-acetamide inducible 1

MW calculé

41 kDa

MW observés:

70 kDa

Méthode de purification:

Purification par affinité contre l'antigène

Dilutions recommandées:

WB 1:1000-1:6000

IP 0.5-4.0 ug for IP and 1:2000-1:10000 for WB

IHC 1:50-1:500

IF 1:50-1:500

Applications

Applications testées:

FC, IF, IHC, IP, WB, ELISA

Demandes citées:

CoIP, IF, IHC, IP, WB

Spécificité de l'espèce:

Humain, rat, souris

Espèces citées:

Humain, souris

Contrôles positifs:

WB : cellules HeLa, cellules MCF-7

IP : cellules HeLa,

IHC : tissu de cancer du sein humain,

IF : cellules HeLa,

Remarque-IHC: il est suggéré de démasquer l'antigène avec un tampon de TE buffer pH 9,0; (*) À défaut, le démasquage de l'antigène peut être effectué avec un tampon citrate pH 6,0.

Informations générales

HEXIM1, also named CLP1, EDG1, HIS1 or MAQ1, is best known as the inhibitor of positive transcription elongation factor b, which regulates the transcription elongation of RNA polymerase II and controls 60-70% of mRNA synthesis. HEXIM1 regulates NF-kappa-B, ESR1, NR3C1 and CIITA-dependent transcriptional activity. Previous studies showed that HEXIM1 interacts with two key p53 regulators, nucleophosmin and HDM2, implying a possible connection between HEXIM1 and the p53 signaling pathway. The mainstream MW of this protein is 65-70 kDa and 54 kDa (PMID: 33627647, PMID: 20976203, PMID: 28254838).

Publications notables

Autrice	Pubmed ID	Journal	Application
Eilebrecht Sebastian S	21957495	RNA Biol	WB,IP
Joshua E Burda	35614216	Nature	IHC
Sebastian Eilebrecht	24623795	Nucleic Acids Res	WB

Stockage

Stockage:

Stocker à -20°C. Stable pendant un an après l'expédition.

Tampon de stockage:

PBS avec azoture de sodium à 0,02 % et glycérol à 50 % pH 7,3

L'aliquotage n'est pas nécessaire pour le stockage à -20C

*** Les 20ul contiennent 0,1% de BSA.

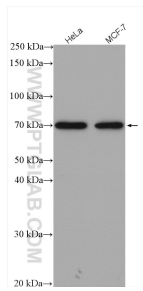
For technical support and original validation data for this product please contact:

T: 1 (888) 4PTGLAB (1-888-478-4522) (toll free in USA), or 1(312) 455-8498 (outside USA)

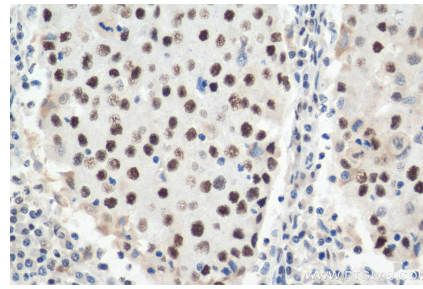
E: proteintech@ptglab.com
W: ptglab.com

This product is exclusively available under Proteintech Group brand and is not available to purchase from any other manufacturer.

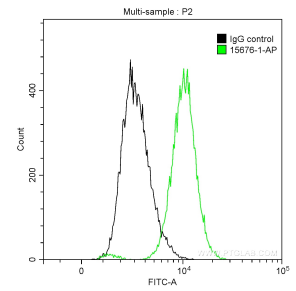
Données de validation sélectionnées



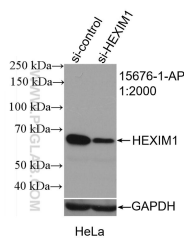
Various lysates were subjected to SDS PAGE followed by western blot with 15676-1-AP (HEXIM1 antibody) at dilution of 1:3000 incubated at room temperature for 1.5 hours.



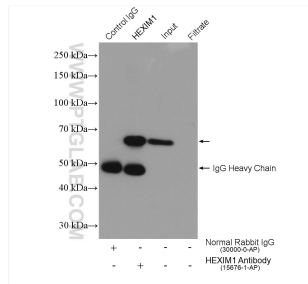
Immunohistochemical analysis of paraffin-embedded human breast cancer tissue slide using 15676-1-AP (HEXIM1 antibody) at dilution of 1:200 (under 40x Lens). Heat mediated antigen retrieval with Tris-EDTA buffer (pH 9.0).



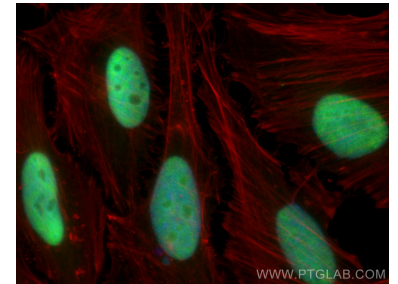
1X10⁶ HeLa cells were intracellularly stained with 0.2 ug Anti-Human HEXIM1 (15676-1-AP) and CoraLite@488-Conjugated AffiniPure Goat Anti-Rabbit IgG(H+L) at dilution 1:1000 (green), and 0.2 ug Control Antibody. Cells were fixed with 90% MeOH.



WB result of HEXIM1 antibody (15676-1-AP; 1:2000; incubated at room temperature for 1.5 hours) with sh-Control and sh-HEXIM1 transfected HeLa cells.



IP result of anti-HEXIM1(IP:15676-1-AP, 4ug; Detection:15676-1-AP 1:5000) with HeLa cells lysate 1880 ug.



Immunofluorescent analysis of (4% PFA) fixed HeLa cells using HEXIM1 antibody (15676-1-AP) at dilution of 1:200 and CoraLite@488-Conjugated AffiniPure Goat Anti-Rabbit IgG(H+L), CL594-Phalloidin (red).