

À des fins de recherche uniquement

Anticorps Polyclonal de lapin anti-CDC45L



Numéro de catalogue: 15678-1-AP

Phare

4 Publications

Informations de base

Numéro de catalogue:

15678-1-AP

Taille:

150ul, Concentration: 550 µg/ml by Nanodrop and 313 µg/ml by Bradford method using BSA as the standard;

Hôte:

Lapin

Isotype:

IgG

Immunogen Catalog Number:

AG8150

Numéro d'acquisition GenBank:

BC010022

Identification du gène (NCBI):

8318

Nom complet:

CDC45 cell division cycle 45-like (S. cerevisiae)

MW calculé

64 kDa

MW observés:

60-66 kDa

Méthode de purification:

Purification par affinité contre l'antigène

Dilutions recommandées:

WB 1:500-1:3000

IP 0.5-4.0 ug for IP and 1:500-1:2000 for WB

IHC 1:50-1:500

IF 1:10-1:100

Applications

Applications testées:

FC, IF, IHC, IP, WB, ELISA

Demandes citées:

IHC, WB

Spécificité de l'espèce:

Humain, souris

Espèces citées:

Humain

Remarque-IHC: il est suggéré de démasquer l'antigène avec un tampon de TE buffer pH 9,0; (*) A défaut, 'le démasquage de l'antigène peut être effectué avec un tampon citrate pH 6,0.

Contrôles positifs:

WB : cellules K-562, cellules HEK-293, cellules HeLa, cellules Jurkat, tissu de thymus de souris

IP : cellules K-562,

IHC : tissu testiculaire de souris,

IF : cellules HeLa,

Informations générales

CDC45L (Cell division control protein 45 homolog), plays a role in the initiation of DNA replication, and genetically interacts with MCM family members and with ORC2 and physically form a complex including Mcm5p. It's the first gene missed in DiGeorge syndrome that suggest involve in cell proliferation. This is a rabbit polyclonal antibody raised against part of C-terminus of human CDC45L.

Publications notables

Autrice	Pubmed ID	Journal	Application
Kimbertie A Wittig	34534348	Nucleic Acids Res	WB
Yue Wang	35414135	Signal Transduct Target Ther	WB
Lifei Fan	28467790	Oncotarget	WB

Stockage

Stockage:

Stocker à -20°C. Stable pendant un an après l'expédition.

Tampon de stockage:

PBS avec azoture de sodium à 0,02 % et glycérol à 50 % pH 7,3

L'aliquotage n'est pas nécessaire pour le stockage à -20C

*** Les 20ul contiennent 0,1% de BSA.

For technical support and original validation data for this product please contact:

T: 1 (888) 4PTGLAB (1-888-478-4522) (toll free in USA), or 1(312) 455-8498 (outside USA)

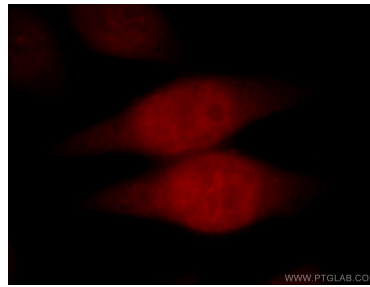
E: proteintech@ptglab.com
W: ptglab.com

This product is exclusively available under Proteintech Group brand and is not available to purchase from any other manufacturer.

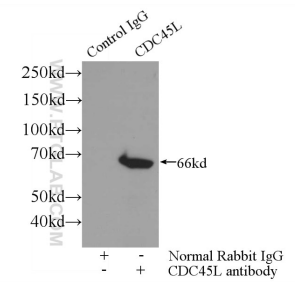
Données de validation sélectionnées



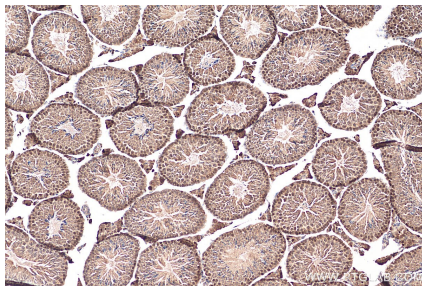
K-562 cells were subjected to SDS PAGE followed by western blot with 15678-1-AP (CDC45L antibody) at dilution of 1:500 incubated at room temperature for 1.5 hours.



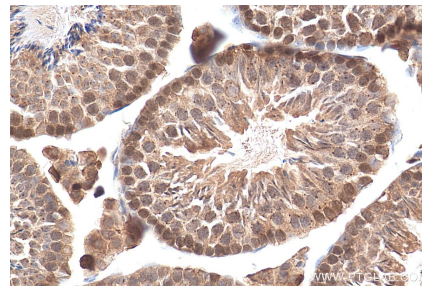
Immunofluorescent analysis of HeLa cells, using CDC45L antibody 15678-1-AP at 1:25 dilution and Rhodamine-labeled goat anti-rabbit IgG (red).



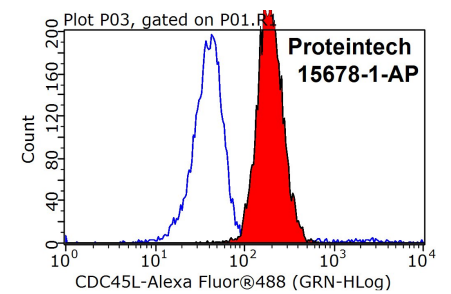
IP Result of anti-CDC45L (IP:15678-1-AP, 3ug; Detection:15678-1-AP 1:1000) with K-562 cells lysate 3400ug.



Immunohistochemical analysis of paraffin-embedded mouse testis tissue slide using 15678-1-AP (CDC45L antibody) at dilution of 1:200 (under 10x lens). Heat mediated antigen retrieval with Tris-EDTA buffer (pH 9.0).



Immunohistochemical analysis of paraffin-embedded mouse testis tissue slide using 15678-1-AP (CDC45L antibody) at dilution of 1:200 (under 40x lens). Heat mediated antigen retrieval with Tris-EDTA buffer (pH 9.0).



1X10⁶ HeLa cells were stained with 0.2ug CDC45L antibody (15678-1-AP, red) and control antibody (blue). Fixed with 90% MeOH blocked with 3% BSA (30 min). Alexa Fluor 488-conjugated AffiniPure Goat Anti-Rabbit IgG(H+L) with dilution 1:1000.