

À des fins de recherche uniquement

Anticorps Polyclonal de lapin anti-ERCC6L



Numéro de catalogue: 15688-1-AP

Phare

4 Publications

Informations de base

Numéro de catalogue: 15688-1-AP	Numéro d'acquisition GenBank: BC008808	Méthode de purification: Purification par affinité contre l'antigène
Taille: 150ul, Concentration: 900 µg/ml by Nanodrop and 433 µg/ml by Bradford method using BSA as the standard;	Identification du gène (NCBI): 54821	Dilutions recommandées: WB 1:1000-1:6000 IHC 1:50-1:500
Hôte: Lapin	Nom complet: excision repair cross-complementing rodent repair deficiency, complementation group 6-like	
Isotype: IgG	MW calculé 419 aa, 46 kDa, 141 kDa	
Immunogen Catalog Number: AG8223	MW observés: 180 kDa	

Applications

Applications testées:

IHC, WB, ELISA

Demandes citées:

IHC, WB

Spécificité de l'espèce:

Humain

Espèces citées:

Humain, souris

Remarque-IHC: il est suggéré de démasquer l'antigène avec un tampon de TE buffer pH 9,0; (*) A défaut, 'le démasquage de l'antigène peut être effectué avec un tampon citrate pH 6,0.

Contrôles positifs:

WB: cellules HeLa, cellules Jurkat, cellules K-562, cellules U2OS, tissu cardiaque humain, tissu pulmonaire de souris

IHC: tissu de cancer du côlon humain,

Informations générales

ERCC6L, also named as Tumor antigen BJ-HCC-15 or PICH, is a 1250 amino acid protein, which contains one helicase ATP-binding domain, one helicase C-terminal domain and two TPR repeats. ERCC6L localizes to kinetochores, inner centromeres and belongs to the SNF2/RAD54 helicase family. ERCC6L as a DNA helicase that acts as an essential component of the spindle assembly checkpoint. The calculated molecular weight of ERCC6L is 140 kDa, but the phosphorylated modification of molecular weight of ERCC6L is about 180kDa.

Publications notables

Autrice	Pubmed ID	Journal	Application
Han Chen	32891122	BMC Cancer	WB
Ma-Li Zu	33716078	J Ethnopharmacol	WB
Xiaoyue Huang	35656882	Oncol Rep	WB

Stockage

Stockage:

Stocker à -20°C. Stable pendant un an après l'expédition.

Tampon de stockage:

PBS avec azoture de sodium à 0,02 % et glycérol à 50 % pH 7,3

L'aliquotage n'est pas nécessaire pour le stockage à -20C

*** Les 20ul contiennent 0,1% de BSA.

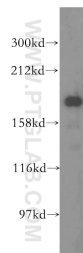
For technical support and original validation data for this product please contact:

T: 1 (888) 4PTGLAB (1-888-478-4522) (toll free in USA), or 1(312) 455-8498 (outside USA)

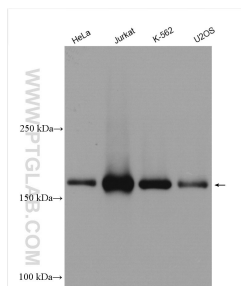
E: proteintech@ptglab.com
W: ptglab.com

This product is exclusively available under Proteintech Group brand and is not available to purchase from any other manufacturer.

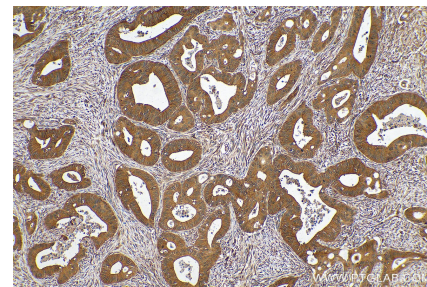
Données de validation sélectionnées



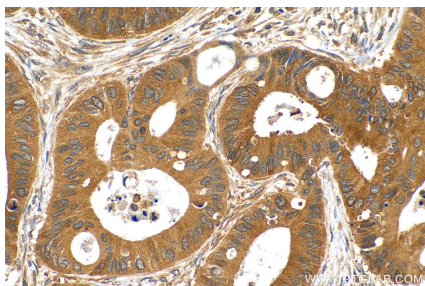
human heart tissue were subjected to SDS PAGE followed by western blot with 15688-1-AP (ERCC6L antibody) at dilution of 1:800 incubated at room temperature for 1.5 hours.



Various lysates were subjected to SDS PAGE followed by western blot with 15688-1-AP (ERCC6L antibody) at dilution of 1:3000 incubated at room temperature for 1.5 hours.



Immunohistochemical analysis of paraffin-embedded human colon cancer tissue slide using 15688-1-AP (ERCC6L antibody) at dilution of 1:200 (under 10x lens). Heat mediated antigen retrieval with Tris-EDTA buffer (pH 9.0).



Immunohistochemical analysis of paraffin-embedded human colon cancer tissue slide using 15688-1-AP (ERCC6L antibody) at dilution of 1:200 (under 40x lens). Heat mediated antigen retrieval with Tris-EDTA buffer (pH 9.0).