

À des fins de recherche uniquement

Anticorps Polyclonal de lapin anti-AP2B1



Numéro de catalogue: 15690-1-AP

Phare

10 Publications

Informations de base

Numéro de catalogue:
15690-1-AP

Taille:
150ul, Concentration: 550 µg/ml by Nanodrop and 347 µg/ml by Bradford method using BSA as the standard;

Hôte:
Lapin

IsoType:
IgG

Immunogen Catalog Number:
AG8248

Numéro d'acquisition GenBank:
BC006201

Identification du gène (NCBI):
163

Nom complet:
adaptor-related protein complex 2, beta 1 subunit

MW calculé

105 kDa

MW observés:

100 kDa-115 kDa

Méthode de purification:
Purification par affinité contre l'antigène

Dilutions recommandées:
WB 1:1000-1:4000
IP 0.5-4.0 ug for IP and 1:500-1:1000 for WB
IF 1:50-1:500

Applications

Applications testées:
IF, IP, WB, ELISA

Demandes citées:
IF, WB

Spécificité de l'espèce:
Humain, rat, souris

Espèces citées:
Humain, porc

Contrôles positifs:

WB : cellules SH-SY5Y, cellules C6, cellules K-562

IP : cellules K-562,

IF : cellules HeLa,

Informations générales

AP2B1 is a component of the adaptor protein complex 2 (AP-2). AP complexes are cytosolic heterotetramers that mediate the sorting of membrane proteins in the secretory and endocytic pathways. AP complexes are involved in the formation of clathrin-coated vesicles (CCVs) by recruiting the scaffold protein, clathrin. AP complexes also play a pivotal role in the cargo selection by recognizing the sorting signals within the cytoplasmic tail of integral membrane proteins. AP-2 works on the plasma membrane to internalize cargo in clathrin-mediated endocytosis.

Publications notables

Autrice	Pubmed ID	Journal	Application
Miwa Sohda	25436429	Biochem Biophys Res Commun	IF
Guangwen Wang	31694949	J Virol	WB
Yuriko Katsumata	31748784	J Neuropathol Exp Neurol	WB

Stockage

Stockage:

Stocker à -20°C. Stable pendant un an après l'expédition.

Tampon de stockage:

PBS avec azoture de sodium à 0,02 % et glycérol à 50 % pH 7,3

L'aliquotage n'est pas nécessaire pour le stockage à -20C

*** Les 20ul contiennent 0,1% de BSA.

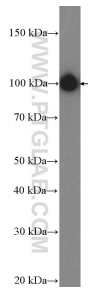
For technical support and original validation data for this product please contact:

T: 1 (888) 4PTGLAB (1-888-478-4522) (toll free in USA), or 1(312) 455-8498 (outside USA)

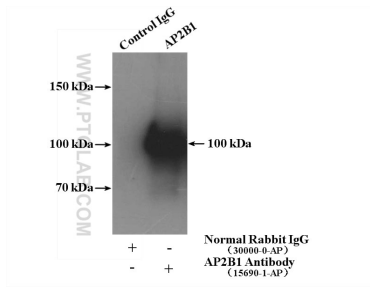
E: proteintech@ptglab.com
W: ptglab.com

This product is exclusively available under Proteintech Group brand and is not available to purchase from any other manufacturer.

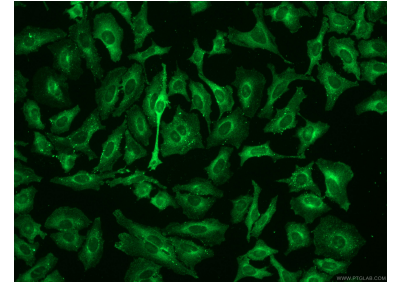
Données de validation sélectionnées



SH-SY5Y cells were subjected to SDS PAGE followed by western blot with 15690-1-AP (AP2B1 Antibody) at dilution of 1:2000 incubated at room temperature for 1.5 hours.



IP Result of anti-AP2B1 (IP:15690-1-AP, 4ug; Detection:15690-1-AP 1:500) with K-562 cells lysate 3200ug.



Immunofluorescent analysis of (4% PFA) fixed HeLa cells using 15690-1-AP (AP2B1 antibody), at dilution of 1:200 and CoraLite®488-Conjugated AffiniPure Goat Anti-Rabbit IgG(H+L).