

À des fins de recherche uniquement

# Anticorps Polyclonal de lapin anti-TK1



Numéro de catalogue: 15691-1-AP

Phare

8 Publications

## Informations de base

Numéro de catalogue:

15691-1-AP

Taille:

150ul, Concentration: 200 µg/ml by Nanodrop and 193 µg/ml by Bradford method using BSA as the standard;

Hôte:

Lapin

Isotype:

IgG

Immunogen Catalog Number:

AG8249

Numéro d'acquisition GenBank:

BC007986

Identification du gène (NCBI):

7083

Nom complet:

thymidine kinase 1, soluble

MW calculé

25 kDa

MW observés:

25 kDa

Méthode de purification:

Purification par affinité contre l'antigène

Dilutions recommandées:

WB 1:500-1:1000

IP 0.5-4.0 ug for IP and 1:500-1:1000 for WB

IHC 1:50-1:500

IF 1:10-1:100

## Applications

Applications testées:

IF, IHC, IP, WB, ELISA

Demandes citées:

IF, IHC, WB

Spécificité de l'espèce:

Humain, rat, souris

Espèces citées:

Humain, rat, souris

**Remarque-IHC: il est suggéré de démasquer l'antigène avec un tampon de TE buffer pH 9,0; (\*) A défaut, le démasquage de l'antigène peut être effectué avec un tampon citrate pH 6,0.**

Contrôles positifs:

WB : cellules HEK-293, cellules MCF-7

IP : cellules HEK-293,

IHC : tissu de cancer du sein humain,

IF : cellules HeLa,

## Informations générales

TK1(Thymidine kinase, cytosolic) belongs to the thymidine kinase family and is a regulatory enzyme that can interchange between its dimeric and tetrameric forms, which have low and high catalytic efficiencies, respectively. TK1 is involved in DNA synthesis and an important proliferation marker(PMID:21178264).

## Publications notables

| Autrice          | Pubmed ID | Journal          | Application |
|------------------|-----------|------------------|-------------|
| Morgan S Schrock | 27773744  | Adv Biol Regul   | WB          |
| Foyan Lian       | 33218277  | Cancer Biol Ther | WB          |
| Xu Jiang         | 31062473  | J Cell Mol Med   | WB          |

## Stockage

Stockage:

Stocker à -20°C. Stable pendant un an après l'expédition.

Tampon de stockage:

PBS avec azoture de sodium à 0,02 % et glycérol à 50 % pH 7,3

L'aliquotage n'est pas nécessaire pour le stockage à -20C

\*\*\* Les 20ul contiennent 0,1% de BSA.

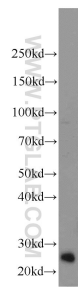
For technical support and original validation data for this product please contact:

T: 1 (888) 4PTGLAB (1-888-478-4522) (toll free in USA), or 1(312) 455-8498 (outside USA)

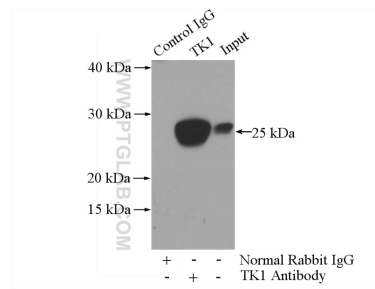
E: proteintech@ptglab.com  
W: ptglab.com

This product is exclusively available under Proteintech Group brand and is not available to purchase from any other manufacturer.

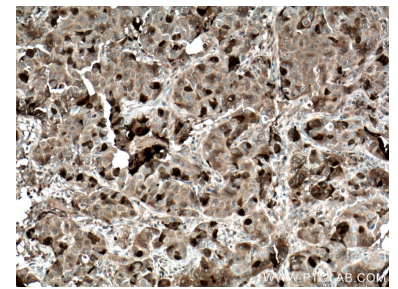
## Données de validation sélectionnées



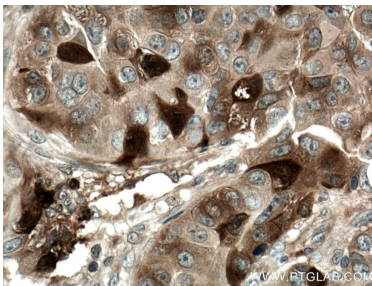
HEK-293 cells were subjected to SDS PAGE followed by western blot with 15691-1-AP (TK1 antibody) at dilution of 1:300 incubated at room temperature for 1.5 hours.



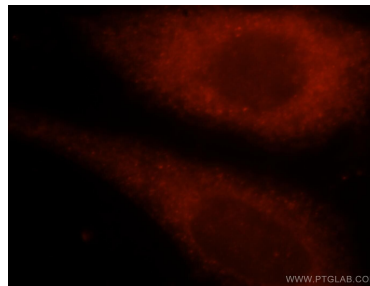
IP Result of anti-TK1 (IP:15691-1-AP, 3 $\mu$ g; Detection:15691-1-AP 1:500) with HEK-293 cells lysate 3200 $\mu$ g.



Immunohistochemical analysis of paraffin-embedded human breast cancer tissue slide using 15691-1-AP (TK1 antibody) at dilution of 1:200 (under 10x lens. Heat mediated antigen retrieval with Tris-EDTA buffer (pH 9.0).



Immunohistochemical analysis of paraffin-embedded human breast cancer tissue slide using 15691-1-AP (TK1 antibody) at dilution of 1:200 (under 40x lens. Heat mediated antigen retrieval with Tris-EDTA buffer (pH 9.0).



Immunofluorescent analysis of HeLa cells, using TK1 antibody 15691-1-AP at 1:25 dilution and Rhodamine-labeled goat anti-rabbit IgG (red).