

À des fins de recherche uniquement

# Anticorps Polyclonal de lapin anti-IGFBP2



Numéro de catalogue: 15699-1-AP

## Informations de base

<b>Numéro de catalogue:</b> 15699-1-AP	<b>Numéro d'acquisition GenBank:</b> BC004312	<b>Méthode de purification:</b> Purification par affinité contre l'antigène
<b>Taille:</b> 150ul, Concentration: 240 µg/ml by Nanodrop and 153 µg/ml by Bradford method using BSA as the standard;	<b>Identification du gène (NCBI):</b> 3485	<b>Dilutions recommandées:</b> WB 1:500-1:1000 IHC 1:50-1:500 IF 1:10-1:100
<b>Hôte:</b> Lapin	<b>Nom complet:</b> IGF binding protein 2	
<b>Isotype:</b> IgG	<b>MW calculé</b> 36 kDa	
<b>Immunogen Catalog Number:</b> AG8327	<b>MW observés:</b> 32 kDa	

## Applications

<b>Applications testées:</b> IF, IHC, WB, ELISA	<b>Contrôles positifs:</b> WB : cellules MCF-7, cellules PC-3
<b>Spécificité de l'espèce:</b> Humain	<b>IHC :</b> tissu de cancer du sein humain, tissu de cancer de la prostate humain, tissu de gliome humain
<b>Remarque-IHC:</b> <i>il est suggéré de démasquer l'antigène avec un tampon de TE buffer pH 9.0; (*) À défaut, le démasquage de l'antigène peut être effectué avec un tampon citrate pH 6,0.</i>	<b>IF :</b> cellules HeLa,

## Informations générales

Insulin-like growth factors (IGFs) and their binding proteins (IGFBPs) have important metabolic roles in the human body. IGFBP-2 is a 34 kD IGFBP protein with degraded fragments of 24 kD, 19kd and 15kd. The levels of IGFBP2 are elevated during progression of many human cancers. IGFBP2 is expressed in invasive PAC, whereas its expression in HG-PIN is low. It can be as an Immunohistochemical Marker for Prostatic Adenocarcinoma.

## Stockage

**Stockage:**  
Stocker à -20°C. Stable pendant un an après l'expédition.  
**Tampon de stockage:**  
PBS avec azoture de sodium à 0,02 % et glycérol à 50 % pH 7,3  
L'aliquotage n'est pas nécessaire pour le stockage à -20C

\*\*\* Les 20ul contiennent 0,1% de BSA.

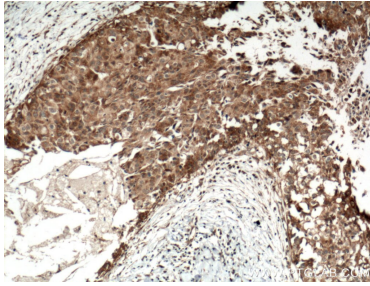
For technical support and original validation data for this product please contact:

T: 1 (888) 4PTGLAB (1-888-478-4522) (toll free in USA), or 1(312) 455-8498 (outside USA)

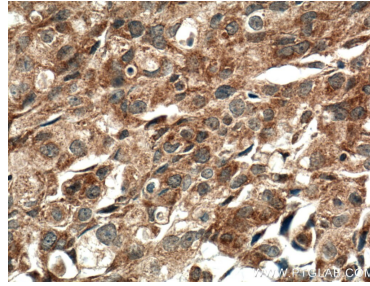
E: proteintech@ptglab.com  
W: ptglab.com

This product is exclusively available under Proteintech Group brand and is not available to purchase from any other manufacturer.

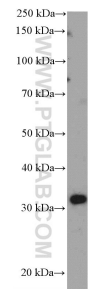
## Données de validation sélectionnées



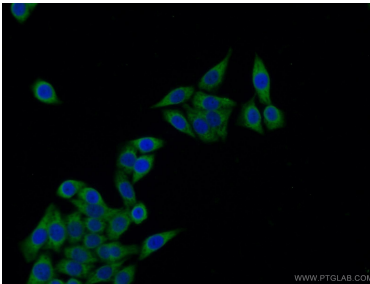
Immunohistochemical analysis of paraffin-embedded human breast cancer tissue slide using 15699-1-AP (IGFBP2 antibody) at dilution of 1:100 (under 10x lens. Heat mediated antigen retrieval with Tris-EDTA buffer (pH 9.0)).



Immunohistochemical analysis of paraffin-embedded human breast cancer tissue slide using 15699-1-AP (IGFBP2 antibody) at dilution of 1:100 (under 40x lens. Heat mediated antigen retrieval with Tris-EDTA buffer (pH 9.0)).



MCF-7 cells were subjected to SDS PAGE followed by western blot with 15699-1-AP (IGFBP2 Antibody) at dilution of 1:600 incubated at room temperature for 1.5 hours.



Immunofluorescent analysis of HeLa cells using 15699-1-AP (IGFBP2 antibody) at dilution of 1:25 and Alexa Fluor 488-conjugated AffiniPure Goat Anti-Rabbit IgG(H+L).