

À des fins de recherche uniquement

Anticorps Polyclonal de lapin anti-TUBGCP3



Numéro de catalogue: 15719-1-AP

Phare

11 Publications

Informations de base

Numéro de catalogue:

15719-1-AP

Taille:

150ul, Concentration: 320 µg/ml by Bradford method using BSA as the standard;

Hôte:

Lapin

Isotype:

IgG

Immunogen Catalog Number:

AG8437

Numéro d'acquisition GenBank:

BC007763

Identification du gène (NCBI):

10426

Nom complet:

tubulin, gamma complex associated protein 3

MW calculé

103,5 kDa

MW observés:

95-101 kDa

Méthode de purification:

Purification par affinité contre l'antigène

Dilutions recommandées:

WB 1:500-1:2000

Applications

Applications testées:

WB, ELISA

Demandes citées:

IF, WB

Spécificité de l'espèce:

Humain

Espèces citées:

Humain, souris

Contrôles positifs:

WB: cellules Jurkat, cellules HeLa

Informations générales

TUBGCP3, also named as γ -tubulin complex protein 3, localized to the centrosome, is a member of γ -tubulin complex proteins which play key roles in microtubule nucleation and organization. It has been reported that TUBGCP3 rotation can bring γ -tubulin molecules into proximity. 15719-1-AP antibody detects the isoform proteins around 95-101 kDa and 50 kDa in SDS-PAGE.

Publications notables

Autrice	Pubmed ID	Journal	Application
Rosa Ramírez Cota	27852835	J Cell Sci	WB, IF
Sahana Shankar	36384111	Cell Rep	WB, IF
Guobao Li	31178691	Front Mol Neurosci	WB

Stockage

Stockage:

Stocker à -20°C. Stable pendant un an après l'expédition.

Tampon de stockage:

PBS avec azoture de sodium à 0,02 % et glycérol à 50 % pH 7,3

L'aliquotage n'est pas nécessaire pour le stockage à -20C

*** Les 20ul contiennent 0,1% de BSA.

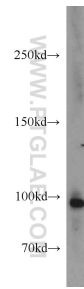
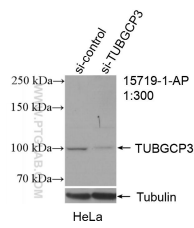
For technical support and original validation data for this product please contact:

T: 1 (888) 4PTGLAB (1-888-478-4522) (toll free in USA), or 1(312) 455-8498 (outside USA)

E: proteintech@ptglab.com
W: ptglab.com

This product is exclusively available under Proteintech Group brand and is not available to purchase from any other manufacturer.

Données de validation sélectionnées



WB result of TUBGCP3 antibody (15719-1-AP; 1:300; incubated at room temperature for 1.5 hours) with sh-Control and sh-TUBGCP3 transfected HeLa cells.

Jurkat cells were subjected to SDS PAGE followed by western blot with 15719-1-AP (TUBGCP3 antibody) at dilution of 1:1000 incubated at room temperature for 1.5 hours.