

À des fins de recherche uniquement

Anticorps Polyclonal de lapin anti-NUF2



Numéro de catalogue: 15731-1-AP

Phare

5 Publications

Informations de base

Numéro de catalogue:

15731-1-AP

Taille:

150ul, Concentration: 500 µg/ml by Nanodrop and 180 µg/ml by Bradford method using BSA as the standard;

Hôte:

Lapin

Isotype:

IgG

Immunogen Catalog Number:

AG8479

Numéro d'acquisition GenBank:

BC008489

Identification du gène (NCBI):

83540

Nom complet:

NUF2, NDC80 kinetochore complex component, homolog (S. cerevisiae)

MW calculé

464 aa, 54 kDa

MW observés:

50 kDa

Méthode de purification:

Purification par affinité contre l'antigène

Dilutions recommandées:

WB 1:500-1:2000

IP 0.5-4.0 µg for IP and 1:500-1:1000 for WB

Applications

Applications testées:

IP, WB, ELISA

Demandes citées:

IHC, WB

Spécificité de l'espèce:

Humain

Espèces citées:

Humain, souris

Contrôles positifs:

WB : cellules HEK-293, cellules HeLa, cellules HepG2, cellules PC-3, tissu de muscle squelettique humain, tissu hépatique humain, tissu testiculaire humain

IP : cellules HEK-293,

Informations générales

NUF2 (NUF2, Ndc80 kinetochore complex component) plays an important role in kinetochore-microtubule attachment. NUF2 was reported to be overexpressed in various kinds of carcinomas including lung cancer, cholangiocellular cancer, urinary bladder cancer, renal cell cancer, colorectal cancer, gastric cancer, ovarian cancer and serous adenocarcinoma. Elevated expression of NUF2 was associated with poorer prognosis of non-small cell lung cancer patients (PMID: 17079454). Knockdown of NUF2 significantly caused cell growth delay and increased apoptosis in cell lines of non-small cell lung cancer, colorectal cancer, gastric cancer and ovarian cancer.

Publications notables

| Autrice | Pubmed ID | Journal | Application |
|-------------|-----------|----------------|-------------|
| Jiatian Lin | 35813477 | Int J Biol Sci | WB, IHC |
| Min Wu | 30655516 | Nat Commun | IF |
| Xina Xie | 33608495 | Cell Death Dis | WB |

Stockage

Stockage:

Stocker à -20°C. Stable pendant un an après l'expédition.

Tampon de stockage:

PBS avec azoture de sodium à 0,02 % et glycérol à 50 % pH 7,3

L'aliquotage n'est pas nécessaire pour le stockage à -20°C

*** Les 20ul contiennent 0,1% de BSA.

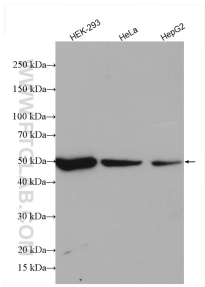
For technical support and original validation data for this product please contact:

T: 1 (888) 4PTGLAB (1-888-478-4522) (toll free in USA), or 1(312) 455-8498 (outside USA)

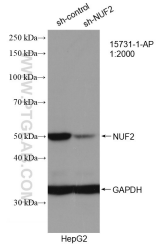
E: proteintech@ptglab.com
W: ptglab.com

This product is exclusively available under Proteintech Group brand and is not available to purchase from any other manufacturer.

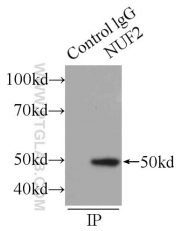
Données de validation sélectionnées



Various lysates were subjected to SDS PAGE followed by western blot with 15731-1-AP (NUF2 antibody) at dilution of 1:1000 incubated at room temperature for 1.5 hours.



WB result of NUF2 antibody (15731-1-AP; 1:2000; incubated at room temperature for 1.5 hours) with sh-Control and sh-NUF2 transfected HepG2 cells.



IP Result of anti-NUF2 (IP:15731-1-AP, 3ug; Detection:15731-1-AP 1:500) with HEK-293 cells lysate 1760ug.