

À des fins de recherche uniquement

Anticorps Polyclonal de lapin anti-Hemopexin



Numéro de catalogue: 15736-1-AP

4 Publications

Informations de base

Numéro de catalogue:

15736-1-AP

Taille:

150ul, Concentration: 400 µg/ml by Nanodrop and 260 µg/ml by Bradford method using BSA as the standard;

Hôte:

Lapin

Isotype:

IgG

Immunogen Catalog Number:

AG8533

Numéro d'acquisition GenBank:

BC005395

Identification du gène (NCBI):

3263

Nom complet:

hemopexin

MW calculé

254 aa, 29 kDa

MW observés:

65-75 kDa

Méthode de purification:

Purification par affinité contre l'antigène

Dilutions recommandées:

WB 1:500-1:3000

Applications

Applications testées:

WB, ELISA

Demandes citées:

IF, IHC, WB

Spécificité de l'espèce:

Humain

Espèces citées:

Humain, rat, souris

Contrôles positifs:

WB : tissu sanguin humain, plasma humain, sérum de souris, tissu placentaire humain

Informations générales

Hemopexin (HPX) is the plasma protein responsible for scavenging heme, thus preventing heme-mediated oxidative stress and heme-bound iron loss. In addition, hemopexin blocks heme activation of immune receptors and vascular inflammatory processes. It is mainly expressed in liver, the synthesis of which is induced after inflammation. Alterations of plasma hemopexin level have been linked to disorders like atherosclerosis and inflammatory diseases.

Publications notables

Autrice	Pubmed ID	Journal	Application
Yanxia Jin	26908325	Br J Cancer	WB
Xianjun Sun	31237037	J Cell Biochem	IHC
Nurul Jannah Mohamed Nasir	37267120	Elife	IF

Stockage

Stockage:

Stocker à -20°C. Stable pendant un an après l'expédition.

Tampon de stockage:

PBS avec azoture de sodium à 0,02 % et glycérol à 50 % pH 7,3

L'aliquotage n'est pas nécessaire pour le stockage à -20C

*** Les 20ul contiennent 0,1% de BSA.

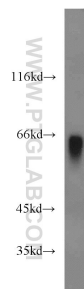
For technical support and original validation data for this product please contact:

T: 1 (888) 4PTGLAB (1-888-478-4522) (toll free in USA), or 1(312) 455-8498 (outside USA)

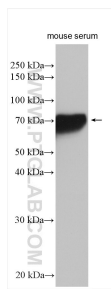
E: proteintech@ptglab.com
W: ptglab.com

This product is exclusively available under Proteintech Group brand and is not available to purchase from any other manufacturer.

Données de validation sélectionnées



human blood were subjected to SDS PAGE followed by western blot with 15736-1-AP (Hemopexin antibody) at dilution of 1:2000 incubated at room temperature for 1.5 hours.



mouse serum were subjected to SDS PAGE followed by western blot with 15736-1-AP (Hemopexin antibody) at dilution of 1:10000 incubated at room temperature for 1.5 hours.