

À des fins de recherche uniquement

Anticorps Polyclonal de lapin anti-DOK3



Numéro de catalogue: 15749-1-AP

1 Publications

Informations de base

Numéro de catalogue:

15749-1-AP

Taille:

150ul, Concentration: 200 µg/ml by Nanodrop and 200 µg/ml by Bradford method using BSA as the standard;

Hôte:

Lapin

Isotype:

IgG

Immunogen Catalog Number:

AG8221

Numéro d'acquisition GenBank:

BC004564

Identification du gène (NCBI):

79930

Nom complet:

docking protein 3

MW calculé

496aa,53 kDa; 330aa,36 kDa

MW observés:

53 kDa

Méthode de purification:

Purification par affinité contre l'antigène

Dilutions recommandées:

WB 1:500-1:3000

Applications

Applications testées:

WB, ELISA

Demandes citées:

IHC

Spécificité de l'espèce:

Humain, rat, souris

Espèces citées:

Humain

Contrôles positifs:

WB : cellules K-562, cellules Ramos

Informations générales

The adaptor proteins downstream of kinase 1 (DOK1) to DOK3 are mainly found in immune cells, and they are closely related, with some functional redundancy, although each DOK protein has distinct properties and functions. DOK1 to DOK3 inhibit LPS responses. DOK proteins have an N-terminal pleckstrin homology (PH) domain, a phosphotyrosine-binding (PTB) domain, and four tyrosine-containing motifs that can bind to Src homology 2 (SH2) domains when phosphorylated. DOK3 was also shown to have an inhibitory role as it restricts Ca²⁺ and JNK activation in B cell receptor signaling. The MW of this protein is 53 kDa, and this antibody specially recognises the 53 kDa protein.

Publications notables

Autrice	Pubmed ID	Journal	Application
Xiu Liu	32193105	Int Immunopharmacol	IHC

Stockage

Stockage:

Stocker à -20°C. Stable pendant un an après l'expédition.

Tampon de stockage:

PBS avec azoture de sodium à 0,02 % et glycérol à 50 % pH 7,3

L'aliquotage n'est pas nécessaire pour le stockage à -20C

*** Les 20ul contiennent 0,1% de BSA.

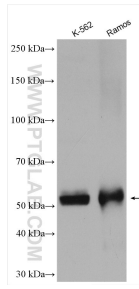
For technical support and original validation data for this product please contact:

T: 1 (888) 4PTGLAB (1-888-478-4522) (toll free in USA), or 1(312) 455-8498 (outside USA)

E: proteintech@ptglab.com
W: ptglab.com

This product is exclusively available under Proteintech Group brand and is not available to purchase from any other manufacturer.

Données de validation sélectionnées



Various lysates were subjected to SDS PAGE followed by western blot with 15749-1-AP (DOK3 antibody) at dilution of 1:1500 incubated at room temperature for 1.5 hours.