

À des fins de recherche uniquement

Anticorps Polyclonal de lapin anti- CRYBA2



Numéro de catalogue: 15750-1-AP

Informations de base

Numéro de catalogue: 15750-1-AP	Numéro d'acquisition GenBank: BC006285	Méthode de purification: Purification par affinité contre l'antigène
Taille: 150ul , Concentration: 350 µg/ml by Nanodrop and 200 µg/ml by Bradford method using BSA as the standard;	Identification du gène (NCBI): 1412	Dilutions recommandées: WB 1:2000-1:12000
Hôte: Lapin	Nom complet: crystallin, beta A2	
Isotype: IgG	MW calculé: 197 aa, 22 kDa	
Immunogen Catalog Number: AG8222	MW observés: 22 kDa	

Applications

Applications testées: WB, ELISA	Contrôles positifs: WB : tissu oculaire de souris, tissu oculaire de rat
Spécificité de l'espèce: Humain, rat, souris	

Informations générales

CRYBA2, also named as Beta A2 crystallin, is a member of crystallin superfamily. Mammalian lens crystallins are divided into alpha, beta, and gamma families; beta and gamma crystallins are also defined as a superfamily. Alpha and beta families are further divided into acidic and basic groups. Crystallins are the dominant structural components of the vertebrate eye lens. The MW of this protein is 22 kDa, and this antibody specially recognises the 22 kDa protein.

Stockage

Stockage:
Stocker à -20°C. Stable pendant un an après l'expédition.
Tampon de stockage:
PBS avec azoture de sodium à 0,02 % et glycérol à 50 % pH 7,3
L'aliquotage n'est pas nécessaire pour le stockage à -20C

***** Les 20ul contiennent 0,1% de BSA.**

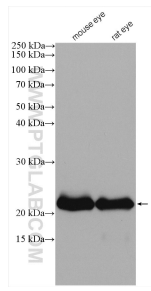
For technical support and original validation data for this product please contact:

T: 1 (888) 4PTGLAB (1-888-478-4522) (toll free in USA), or 1(312) 455-8498 (outside USA)

E: proteintech@ptglab.com
W: ptglab.com

This product is exclusively available under Proteintech Group brand and is not available to purchase from any other manufacturer.

Données de validation sélectionnées



Various lysates were subjected to SDS PAGE followed by western blot with 15750-1-AP (CRYBA2 antibody) at dilution of 1:6000 incubated at room temperature for 1.5 hours.