

À des fins de recherche uniquement

Anticorps Polyclonal de lapin anti-CHMP1A



Numéro de catalogue: 15761-1-AP

Phare

8 Publications

Informations de base

Numéro de catalogue:

15761-1-AP

Taille:

150ul, Concentration: 400 µg/ml by Nanodrop and 267 µg/ml by Bradford method using BSA as the standard;

Hôte:

Lapin

Isotype:

IgG

Immunogen Catalog Number:

AG8389

Numéro d'acquisition GenBank:

BC007527

Identification du gène (NCBI):

5119

Nom complet:

chromatin modifying protein 1A

MW calculé

196 aa, 22 kDa

MW observés:

33 kDa, 25 kDa

Méthode de purification:

Purification par affinité contre l'antigène

Dilutions recommandées:

WB 1:500-1:1000

IP 0.5-4.0 µg for IP and 1:500-1:1000 for WB

IHC 1:50-1:500

IF 1:50-1:500

Applications

Applications testées:

IF, IHC, IP, WB, ELISA

Demandes citées:

IF, IHC, WB

Spécificité de l'espèce:

Humain, souris

Espèces citées:

Humain, souris

Remarque-IHC: il est suggéré de démasquer l'antigène avec un tampon de TE buffer pH 9,0; (*) A défaut, le démasquage de l'antigène peut être effectué avec un tampon citrate pH 6,0.

Contrôles positifs:

WB : cellules HEK-293, cellules A431, cellules HeLa, tissu pulmonaire de souris, tissu rénal de souris

IP : cellules HEK-293,

IHC : tissu cérébral de souris, tissu cutané humain, tissu pulmonaire humain, tissu testiculaire de souris

IF : cellules HepG2,

Informations générales

Charged multivesicular body protein 1A (CHMP1A), also known as chromatin modifying protein 1A, is a member of the ESCRT-III (endosomal sorting complex required for transport III) complex which is involved in degradation of internalized transmembrane receptor proteins and formation of multivesicular bodies (MVBs) (PMID: 16730941). CHMP1A has both nuclear and cytoplasmic distributions (PMID: 11559748; 11559747). Subcellular localization of CHMP1A seems to vary depending on the cell type (PMID: 23023333). CHMP1A is required for MVBs formation and has a role in stable gene silencing within the nucleus. Besides, the tumor suppressor role of CHMP1A has also been reported (PMID: 18787405; 22261332).

Publications notables

Autrice	Pubmed ID	Journal	Application
Na Sun	31894018	Biochem Biophys Res Commun	WB
Yuting Guan	34426578	Nat Commun	WB, IF
Vincent Mercier	32753669	Nat Cell Biol	IF

Stockage

Stockage:

Stocker à -20°C. Stable pendant un an après l'expédition.

Tampon de stockage:

PBS avec azoture de sodium à 0,02 % et glycérol à 50 % pH 7,3

L'aliquoteage n'est pas nécessaire pour le stockage à -20C

*** Les 20ul contiennent 0,1% de BSA.

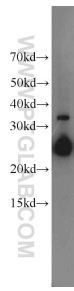
For technical support and original validation data for this product please contact:

T: 1 (888) 4PTGLAB (1-888-478-4522) (toll free in USA), or 1(312) 455-8498 (outside USA)

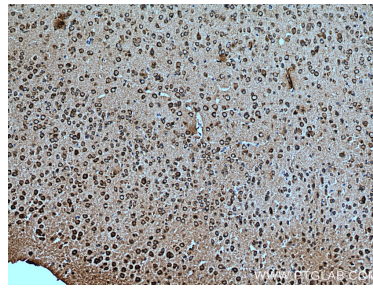
E: proteintech@ptglab.com
W: ptglab.com

This product is exclusively available under Proteintech Group brand and is not available to purchase from any other manufacturer.

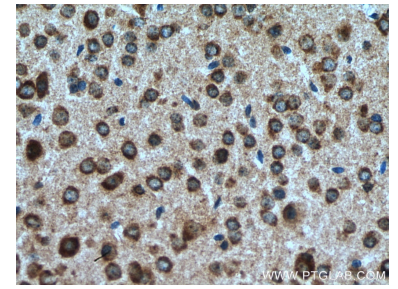
Données de validation sélectionnées



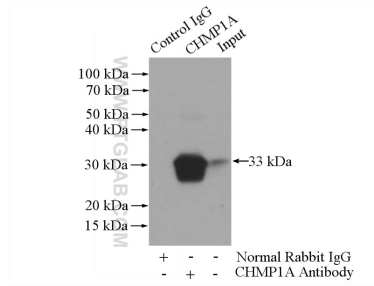
HEK-293 cells were subjected to SDS PAGE followed by western blot with 15761-1-AP (CHMP1A antibody) at dilution of 1:500 incubated at room temperature for 1.5 hours.



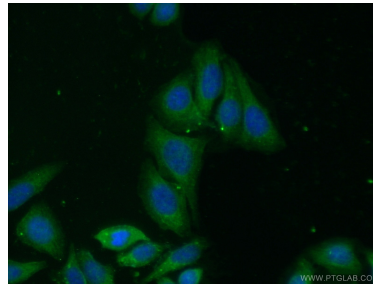
Immunohistochemical analysis of paraffin-embedded mouse brain tissue slide using 15761-1-AP (CHMP1A antibody) at dilution of 1:200 (under 10x lens). Heat mediated antigen retrieval with Tris-EDTA buffer (pH 9.0).



Immunohistochemical analysis of paraffin-embedded mouse brain tissue slide using 15761-1-AP (CHMP1A antibody) at dilution of 1:200 (under 40x lens). Heat mediated antigen retrieval with Tris-EDTA buffer (pH 9.0).



IP Result of anti-CHMP1A (IP:15761-1-AP, 3ug; Detection:15761-1-AP 1:500) with HEK-293 cells lysate 880ug.



Immunofluorescent analysis of (-20°C Ethanol) fixed HepG2 cells using 15761-1-AP (CHMP1A antibody) at dilution of 1:50 and Alexa Fluor 488-conjugated AffiniPure Goat Anti-Rabbit IgG(H+L).