

À des fins de recherche uniquement

Anticorps Polyclonal de lapin anti-RAB3B/C



Numéro de catalogue: 15774-1-AP

3 Publications

Informations de base

Numéro de catalogue:

15774-1-AP

Taille:

150ul, Concentration: 240 µg/ml by Nanodrop and 180 µg/ml by Bradford method using BSA as the standard;

Hôte:

Lapin

Isotype:

IgG

Immunogen Catalog Number:

AG8441

Numéro d'acquisition GenBank:

BC005035

Identification du gène (NCBI):

5865

Nom complet:

RAB3B, member RAS oncogene family

MW calculé

219 aa, 25 kDa

MW observés:

25 kDa

Méthode de purification:

Purification par affinité contre l'antigène

Dilutions recommandées:

WB 1:1000-1:6000

IHC 1:20-1:200

IF 1:20-1:200

Applications

Applications testées:

FC, IF, IHC, WB, ELISA

Demandes citées:

IF, WB

Spécificité de l'espèce:

Humain, souris

Espèces citées:

Humain, souris

Remarque-IHC: il est suggéré de démasquer l'antigène avec un tampon de TE buffer pH 9,0; (*) A défaut, le démasquage de l'antigène peut être effectué avec un tampon citrate pH 6,0.

Contrôles positifs:

WB : tissu cérébral de souris, cellules U-251, tissu cérébral de rat, tissu cérébral humain

IHC : tissu de cancer du côlon humain, tissu pancréatique humain

IF : cellules HeLa,

Informations générales

Publications notables

Autrice	Pubmed ID	Journal	Application
Jimena Monzón-Sandoval	32167609	Ann Neurol	WB
Gaynor A Smith	24728190	Hum Mol Genet	WB
Jinxu Hu	36792603	Cell Death Dis	WB,IF

Stockage

Stockage:

Stocker à -20°C. Stable pendant un an après l'expédition.

Tampon de stockage:

PBS avec azoture de sodium à 0,02 % et glycérol à 50 % pH 7,3

L'aliquotage n'est pas nécessaire pour le stockage à -20C

*** Les 20ul contiennent 0,1% de BSA.

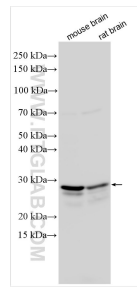
For technical support and original validation data for this product please contact:

T: 1 (888) 4PTGLAB (1-888-478-4522) (toll free in USA), or 1(312) 455-8498 (outside USA)

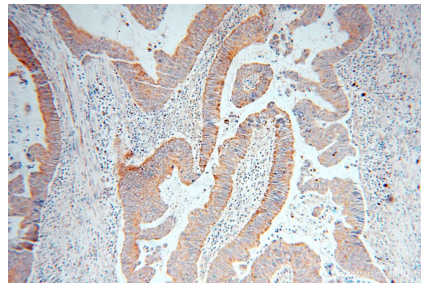
E: proteintech@ptglab.com
W: ptglab.com

This product is exclusively available under Proteintech Group brand and is not available to purchase from any other manufacturer.

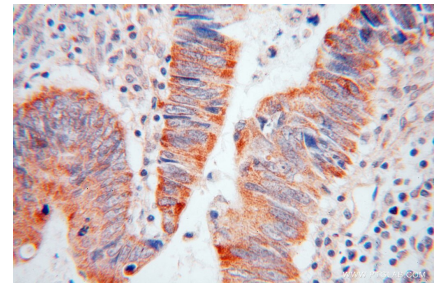
Données de validation sélectionnées



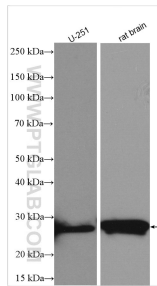
Various lysates were subjected to SDS PAGE followed by western blot with 15774-1-AP (RAB3B/C antibody) at dilution of 1:3000 incubated at room temperature for 1.5 hours.



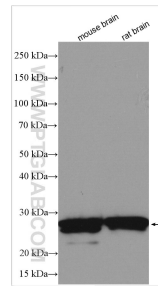
Immunohistochemical analysis of paraffin-embedded human colon cancer using 15774-1-AP (RAB3B antibody) at dilution of 1:50 (under 10x lens).



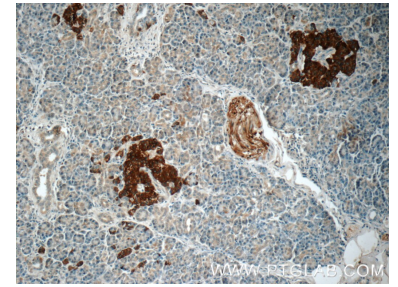
Immunohistochemical analysis of paraffin-embedded human colon cancer using 15774-1-AP (RAB3B antibody) at dilution of 1:50 (under 40x lens).



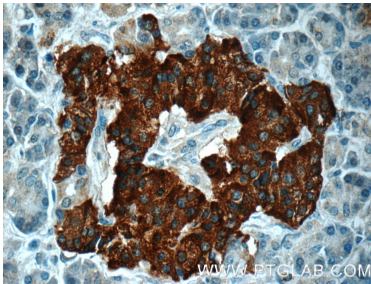
Various lysates were subjected to SDS PAGE followed by western blot with 15774-1-AP (RAB3B antibody) at dilution of 1:1000 incubated at room temperature for 1.5 hours.



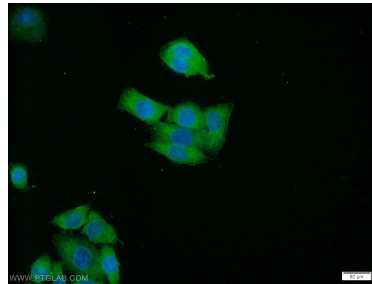
Various lysates were subjected to SDS PAGE followed by western blot with 15774-1-AP (RAB3B antibody) at dilution of 1:1000 incubated at room temperature for 1.5 hours.



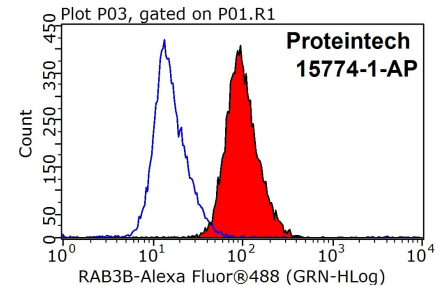
Immunohistochemical analysis of paraffin-embedded human pancreas tissue slide using 15774-1-AP (RAB3B Antibody) at dilution of 1:50 (under 10x lens).



Immunohistochemical analysis of paraffin-embedded human pancreas tissue slide using 15774-1-AP (RAB3B Antibody) at dilution of 1:50 (under 40x lens).



Immunofluorescent analysis of HeLa cells using 15774-1-AP (RAB3B antibody) at dilution of 1:50 and Alexa Fluor 488-conjugated AffiniPure Goat Anti-Rabbit IgG(H+L).



1×10^6 HepG2 cells were stained with 0.2ug RAB3B antibody (15774-1-AP, red) and control antibody (blue). Fixed with 90% MeOH blocked with 3% BSA (30 min). Alexa Fluor 488-conjugated AffiniPure Goat Anti-Rabbit IgG(H+L) with dilution 1:1000.