

À des fins de recherche uniquement

Anticorps Polyclonal de lapin anti-HLA class I (HLA-C)



Numéro de catalogue: 15777-1-AP

1 Publications

Informations de base

Numéro de catalogue:

15777-1-AP

Taille:

150ul, Concentration: 350 µg/ml by Nanodrop and 267 µg/ml by Bradford method using BSA as the standard;

Hôte:

Lapin

Isotype:

IgG

Immunogen Catalog Number:

AG8461

Numéro d'acquisition GenBank:

BC007814

Identification du gène (NCBI):

3107

Nom complet:

major histocompatibility complex, class I, C

MW calculé

366 aa, 41 kDa

MW observés:

44 kDa

Méthode de purification:

Purification par affinité contre l'antigène

Dilutions recommandées:

WB 1:500-1:2000

IP 0.5-4.0 ug for IP and 1:500-1:2000 for WB

IHC 1:20-1:200

IF 1:50-1:500

Applications

Applications testées:

IF, IHC, IP, WB, ELISA

Demandes citées:

WB

Spécificité de l'espèce:

Humain

Espèces citées:

Humain

Remarque-IHC: il est suggéré de démasquer l'antigène avec un tampon de TE buffer pH 9,0; (*) A défaut, 'le démasquage de l'antigène peut être 'effectué avec un tampon citrate pH 6,0.

Contrôles positifs:

WB : cellules Jurkat, cellules HL-60

IP : cellules Jurkat,

IHC : tissu de lymphome humain,

IF : cellules HeLa,

Informations générales

Human major histocompatibility complex (MHC) antigens, also referred to as human leukocyte antigens (HLA), are encoded by genes located on the short arm of chromosome 6 (6p21.3). There are two classes of HLA antigens: class I (HLA-A, B and C) and class II (HLA-D). This class I molecules are polymorphic membrane glycoproteins composed of a heavy (alpha) chain (44 kDa) which is encoded by a HLA class I gene (HLA-A, B or C), and β 2-microglobulin light (beta) chain (12 kDa). They are involved in the presentation of foreign antigens to the immune system. This polyclonal antibody raised against human HLA-C can also react with HLA-A and HLA-B. (PMID: 667938; 3375250)

Publications notables

Autrice	Pubmed ID	Journal	Application
Hong Lv	31018729	J Matern Fetal Neonatal Med	WB

Stockage

Stockage:

Stocker à -20°C. Stable pendant un an après l'expédition.

Tampon de stockage:

PBS avec azoture de sodium à 0,02 % et glycérol à 50 % pH 7,3

L'aliquotage n'est pas nécessaire pour le stockage à -20C

*** Les 20ul contiennent 0,1% de BSA.

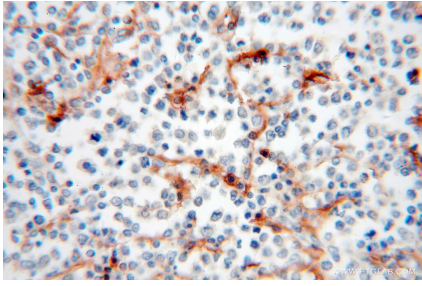
For technical support and original validation data for this product please contact:

T: 1 (888) 4PTGLAB (1-888-478-4522) (toll free in USA), or 1(312) 455-8498 (outside USA)

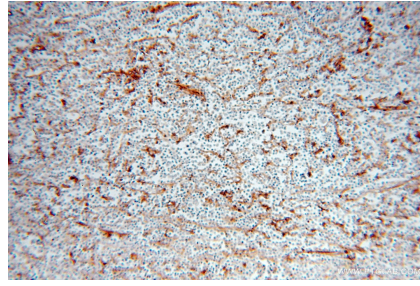
E: proteintech@ptglab.com
W: ptglab.com

This product is exclusively available under Proteintech Group brand and is not available to purchase from any other manufacturer.

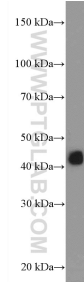
Données de validation sélectionnées



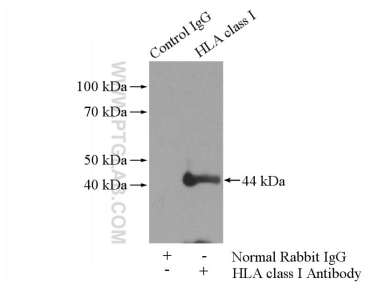
Immunohistochemical analysis of paraffin-embedded human lymphoma using 15777-1-AP (HLA class I (HLA-C) antibody) at dilution of 1:50 (under 40x lens).



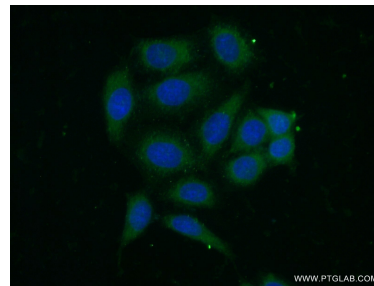
Immunohistochemical analysis of paraffin-embedded human lymphoma using 15777-1-AP (HLA class I (HLA-C) antibody) at dilution of 1:50 (under 10x lens).



Jurkat cells were subjected to SDS PAGE followed by western blot with 15777-1-AP (HLA class I (HLA-C) Antibody) at dilution of 1:1000 incubated at room temperature for 1.5 hours.



IP Result of anti-HLA class I (HLA-C) (IP:15777-1-AP, 4ug; Detection:15777-1-AP 1:1000) with Jurkat cells lysate 2400ug.



Immunofluorescent analysis of (-20°C Ethanol) fixed HeLa cells using 15777-1-AP (HLA class I (HLA-C) antibody) at dilution of 1:50 and Alexa Fluor 488-conjugated AffiniPure Goat Anti-Rabbit IgG(H+L).