

À des fins de recherche uniquement

Anticorps Polyclonal de lapin anti-S100A8



Numéro de catalogue: 15792-1-AP

Phare

24 Publications

Informations de base

Numéro de catalogue: 15792-1-AP	Numéro d'acquisition GenBank: BC005928	Méthode de purification: Purification par affinité contre l'antigène
Taille: 150ul , Concentration: 500 µg/ml by Nanodrop;	Identification du gène (NCBI): 6279	Dilutions recommandées: WB 1:500-1:1000 IHC 1:200-1:800
Hôte: Lapin	Nom complet: S100 calcium binding protein A8	
Isotype: IgG	MW calculé: 93 aa, 11 kDa	
Immunogen Catalog Number: AG8500	MW observés: 11 kDa	

Applications

Applications testées:

FC, IHC, WB, ELISA

Demandes citées:

FC, IF, IHC, WB

Spécificité de l'espèce:

Humain, souris

Espèces citées:

Humain, rat, souris

Contrôles positifs:

WB : cellules THP-1, cellules A549, cellules COLO 320

IHC : tissu de cancer de l'estomac humain,

Remarque-IHC: il est suggéré de démasquer l'antigène avec un tampon de TE buffer pH 9,0; (*) À défaut, le démasquage de l'antigène peut être effectué avec un tampon citrate pH 6,0.

Informations générales

S100A8 is a member of the S100 family of proteins containing 2 EF-hand calcium-binding motifs. S100 proteins are localized in the cytoplasm and/or nucleus of a wide range of cells, and involved in the regulation of a number of cellular processes such as cell cycle progression and differentiation. S100 genes include at least 13 members which are located as a cluster on chromosome 1q21. This protein may function in the inhibition of casein kinase and as a cytokine. S100A8 may form homodimer or heterodimer with S100A9(16216873).

Publications notables

Autrice	Pubmed ID	Journal	Application
Yi-Han Lin	32963032	Mol Cell Proteomics	WB
Li Zhang	32920982	Acta Physiol (Oxf)	WB
Tomomi Morikawa-Ichinose	36100043	Food Chem Toxicol	IF

Stockage

Stockage:

Stocker à -20°C. Stable pendant un an après l'expédition.

Tampon de stockage:

PBS avec azoture de sodium à 0,02 % et glycérol à 50 % pH 7,3

L'aliquotage n'est pas nécessaire pour le stockage à -20C

***** Les 20ul contiennent 0,1% de BSA.**

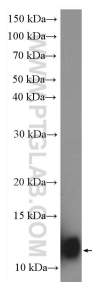
For technical support and original validation data for this product please contact:

T: 1 (888) 4PTGLAB (1-888-478-4522) (toll free in USA), or 1(312) 455-8498 (outside USA)

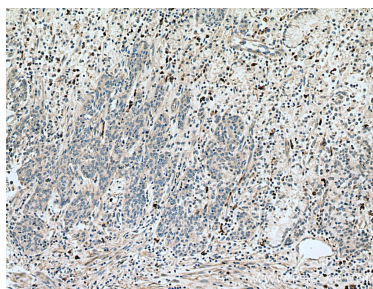
E: proteintech@ptglab.com
W: ptglab.com

This product is exclusively available under Proteintech Group brand and is not available to purchase from any other manufacturer.

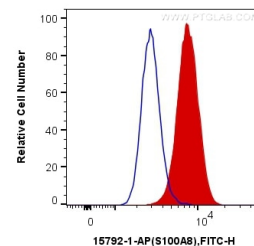
Données de validation sélectionnées



THP-1 cells were subjected to SDS PAGE followed by western blot with 15792-1-AP (S100A8 antibody) at dilution of 1:600 incubated at room temperature for 1.5 hours.



Immunohistochemical analysis of paraffin-embedded human stomach cancer tissue slide using 15792-1-AP (S100A8 antibody) at dilution of 1:400 (under 10x lens). Heat mediated antigen retrieval with Tris-EDTA buffer (pH 9.0).



1×10^6 RAW 264.7 cells were intracellularly stained with 0.4 ug Anti-Human S100A8 (15792-1-AP) and CoraLite®488-Conjugated AffiniPure Goat Anti-Rabbit IgG(H+L) at dilution 1:1000 (red), or 0.4 ug Control Antibody. Cells were fixed with 4% PFA and permeabilized with Flow Cytometry Perm Buffer (PF00011-C).