

À des fins de recherche uniquement

Anticorps Polyclonal de lapin anti-FXYD6



Numéro de catalogue: 15805-1-AP

Phare

2 Publications

Informations de base

Numéro de catalogue: 15805-1-AP	Numéro d'acquisition GenBank: BC018652	Méthode de purification: Purification par affinité contre l'antigène
Taille: 150ul, Concentration: 550 µg/ml by Nanodrop and 193 µg/ml by Bradford method using BSA as the standard;	Identification du gène (NCBI): 53826	Dilutions recommandées: WB 1:500-1:3000 IHC 1:20-1:200
Hôte: Lapin	Nom complet: FXYD domain containing ion transport regulator 6	
Isotype: IgG	MW calculé: 95 aa, 11 kDa	
Immunogen Catalog Number: AG8538	MW observés: 20 kDa	

Applications

Applications testées:

FC, IHC, WB, ELISA

Demandes citées:

IF, WB

Spécificité de l'espèce:

Humain, rat, souris

Espèces citées:

Humain, souris

Remarque-IHC: il est suggéré de démasquer l'antigène avec un tampon de TE buffer pH 9,0; (*) A défaut, 'le démasquage de l'antigène peut être effectué avec un tampon citrate pH 6,0.

Contrôles positifs:

WB : cellules PC-12, cellules SH-SY5Y, tissu cérébral de rat, tissu cérébral de souris, tissu cérébral humain, tissu testiculaire humain

IHC : tissu cérébral humain, tissu cutané humain, tissu hépatique humain, tissu ovarien humain, tissu splénique humain, tissu testiculaire humain

Informations générales

The FXYD family is a group of small single-span transmembrane proteins characterized by a signature sequence containing an FXYD motif, two conserved glycines and a serine residue. Members of the FXYD family, including FXYD1 (phospholemmann), FXYD2 (gamma subunit of Na,K-ATPase), FXYD3 (Mat8), FXYD4 (CHIF), FXYD5 (RIC), FXYD6 (phosphohippolin) and FXYD7, are tissue specific regulators of the Na,K-ATPase. FXYD6 is primarily expressed in the brain. It modulates the kinetic activity of Na,K-ATPase and has long-term physiological importance in maintaining cation homeostasis. It may play a role in endolymph composition and has a potential important role in neuronal excitability of the CNS during postnatal development and in the adult brain. On the SDS-PAGE FXYD6 migrates with an apparent molecular weight of approximately 20 kDa, which is larger than the calculated molecular weight of 10.5 kDa (PMID: 15193427; 17209044). The gene encoding FXYD6 is located on chromosome 11q23.3, and it might be a susceptibility gene of schizophrenia.

Publications notables

Autrice	Pubmed ID	Journal	Application
Wen Luo	34212047	Biomed Res Int	WB
Sébastien J Dumas	31818909	J Am Soc Nephrol	IF

Stockage

Stockage:

Stocker à -20°C. Stable pendant un an après l'expédition.

Tampon de stockage:

PBS avec azoture de sodium à 0,02 % et glycérol à 50 % pH 7,3

L'aliquotage n'est pas nécessaire pour le stockage à -20C

*** Les 20ul contiennent 0,1% de BSA.

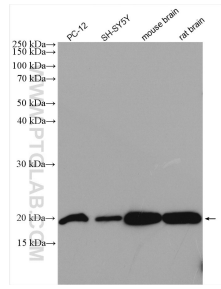
For technical support and original validation data for this product please contact:

T: 1 (888) 4PTGLAB (1-888-478-4522) (toll free in USA), or 1(312) 455-8498 (outside USA)

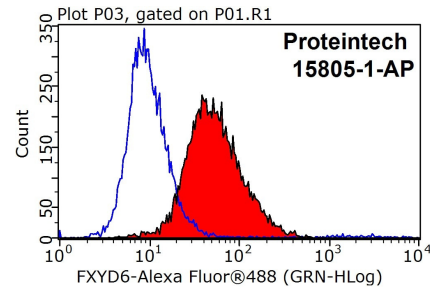
E: proteintech@ptglab.com
W: ptglab.com

This product is exclusively available under Proteintech Group brand and is not available to purchase from any other manufacturer.

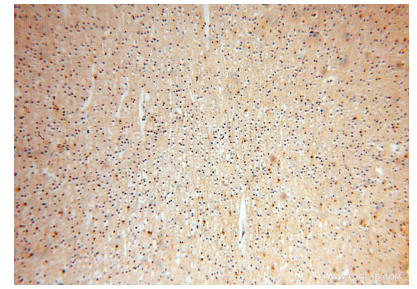
Données de validation sélectionnées



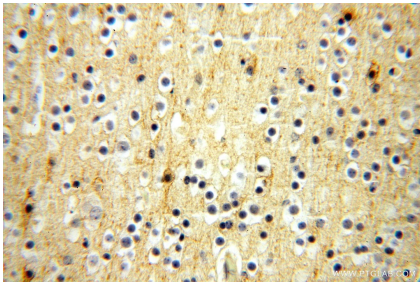
Various lysates were subjected to SDS PAGE followed by western blot with 15805-1-AP (FXD6 antibody) at dilution of 1:1500 incubated at room temperature for 1.5 hours.



1×10^6 SH-SY5Y cells were stained with 0.2 μ g FXD6 antibody (15805-1-AP, red) and control antibody (blue). Fixed with 90% MeOH blocked with 3% BSA (30 min). Alexa Fluor 488-conjugated AffiniPure Goat Anti-Rabbit IgG(H+L) with dilution 1:1000.



Immunohistochemical analysis of paraffin-embedded human brain using 15805-1-AP (FXD6 antibody) at dilution of 1:100 (under 10x lens).



Immunohistochemical analysis of paraffin-embedded human brain using 15805-1-AP (FXD6 antibody) at dilution of 1:100 (under 40x lens).