

À des fins de recherche uniquement

Anticorps Polyclonal de lapin anti-ANP32A



Numéro de catalogue: 15810-1-AP

Phare

1 Publications

Informations de base

Numéro de catalogue: 15810-1-AP	Numéro d'acquisition GenBank: BC007200	Méthode de purification: Purification par affinité contre l'antigène
Taille: 150ul, Concentration: 450 µg/ml by Nanodrop and 267 µg/ml by Bradford method using BSA as the standard;	Identification du gène (NCBI): 8125	Dilutions recommandées: WB 1:1000-1:6000 IHC 1:50-1:500 IF 1:50-1:500
Hôte: Lapin	Nom complet: acidic (leucine-rich) nuclear phosphoprotein 32 family, member A	
Isotype: IgG	MW calculé: 249 aa, 29 kDa	
Immunogen Catalog Number: AG8546	MW observés: 29 kDa	

Applications

Applications testées:

IF, IHC, WB, ELISA

Demandes citées:

WB

Spécificité de l'espèce:

Humain, souris

Espèces citées:

Humain

Remarque-IHC: il est suggéré de démasquer l'antigène avec un tampon de TE buffer pH 9,0; (*) A défaut, 'le démasquage de l'antigène peut être 'effectué avec un tampon citrate pH 6,0.

Contrôles positifs:

WB : cellules A549, cellules HEK-293T, cellules HeLa, cellules MCF-7, cellules Raji, tissu cérébral de souris, tissu cérébral humain, tissu de thymus de souris

IHC : tissu rénal humain,

IF : cellules A431, cellules A2780

Informations générales

ANP32A, an acidic leucine-rich nuclear phosphoprotein, is a member of the inhibitor of the histone acetyltransferase (INHAT) complex and preferentially binds to unmodified histone H3 tails in vitro. ANP32A is expressed in normal tissues as well as in pancreatic, breast and prostate cancer and other malignant tumors. ANP32A plays an important role in cell proliferation, apoptosis, transcriptional regulation, signal transduction and other processes.

Publications notables

Autrice	Pubmed ID	Journal	Application
Xiuli Wei	30666459	Arch Virol	WB

Stockage

Stockage:

Stocker à -20°C. Stable pendant un an après l'expédition.

Tampon de stockage:

PBS avec azoture de sodium à 0,02 % et glycérol à 50 % pH 7,3

L'aliquotage n'est pas nécessaire pour le stockage à -20C

*** Les 20ul contiennent 0,1% de BSA.

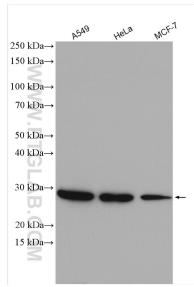
For technical support and original validation data for this product please contact:

T: 1 (888) 4PTGLAB (1-888-478-4522) (toll free in USA), or 1(312) 455-8498 (outside USA)

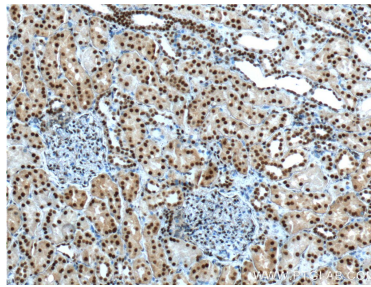
E: proteintech@ptglab.com
W: ptglab.com

This product is exclusively available under Proteintech Group brand and is not available to purchase from any other manufacturer.

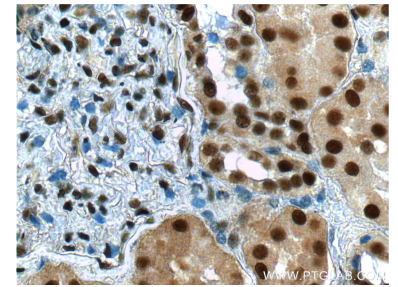
Données de validation sélectionnées



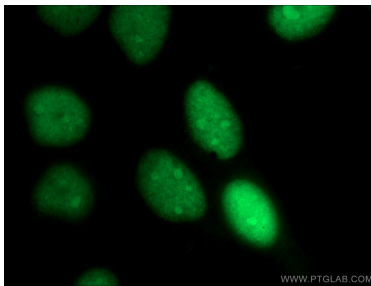
Various cells were subjected to SDS PAGE followed by western blot with 15810-1-AP (ANP32A antibody) at dilution of 1:3000 incubated at room temperature for 1.5 hours.



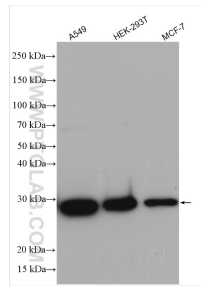
Immunohistochemical analysis of paraffin-embedded human kidney tissue slide using 15810-1-AP (ANP32A Antibody) at dilution of 1:200 (under 10x lens).



Immunohistochemical analysis of paraffin-embedded human kidney tissue slide using 15810-1-AP (ANP32A Antibody) at dilution of 1:200 (under 40x lens).



Immunofluorescent analysis of (-20°C Ethanol) fixed A431 cells using 15810-1-AP (ANP32A antibody) at dilution of 1:50 and Alexa Fluor 488-conjugated AffiniPure Goat Anti-Rabbit IgG(H+L).



Various lysates were subjected to SDS PAGE followed by western blot with 15810-1-AP (ANP32A antibody) at dilution of 1:8000 incubated at room temperature for 1.5 hours.