

À des fins de recherche uniquement

# Anticorps Polyclonal de lapin anti-PKM1-specific



Numéro de catalogue: 15821-1-AP

Phare

67 Publications

## Informations de base

Numéro de catalogue:

15821-1-AP

Taille:

150ul, Concentration: 453 µg/ml by Nanodrop;

Hôte:

Lapin

Isotype:

IgG

Numéro d'acquisition GenBank:

NM\_182470

Identification du gène (NCBI):

5315

Nom complet:

PKM pyruvate kinase, muscle

MW calculé

58 kDa

MW observés:

58 kDa

Méthode de purification:

Purification par affinité contre l'antigène

Dilutions recommandées:

WB 1:1000-1:4000

IP 0.5-4.0 ug for IP and 1:500-1:2000 for WB

IHC 1:50-1:500

## Applications

Applications testées:

IHC, IP, WB, ELISA

Demandes citées:

ColP, IF, IHC, IP, WB

Spécificité de l'espèce:

Humain, rat, souris

Espèces citées:

bovin, Humain, rat, singe, souris

**Remarque-IHC: il est suggéré de démasquer l'antigène avec un tampon de TE buffer pH 9,0; (\*) À défaut, le démasquage de l'antigène peut être effectué avec un tampon citrate pH 6,0.**

Contrôles positifs:

WB : tissu de muscle squelettique de souris, cellules 293, cellules HepG2/MCF7, multi-cellules/tissus, tissu cardiaque de souris, tissu cérébral de rat, tissu cérébral de souris, tissu de côlon de souris, tissus musculaire/hépatique de souris

IP : tissu cérébral de souris,

IHC : tissu de gliome humain, tissu cardiaque de souris, tissu cardiaque humain, tissu cérébral humain, tissu de muscle squelettique humain

## Informations générales

PKM, also named as OIP3, PK2, PK3, PKM, p58, THBP1, CTHBP and Tumor M2-PK, belongs to the pyruvate kinase family. It is glycolytic enzyme that catalyzes the transfer of a phosphoryl group from phosphoenolpyruvate (PEP) to ADP, generating ATP. It stimulates POU5F1-mediated transcriptional activation. PKM plays a general role in caspase independent cell death of tumor cells. PKM has 2 isoforms named PKM1 and PKM2. The primary pyruvate kinase isoform before tumour development is PK-M1; however, the primary isoform from four independent tumours is PK-M2 (PMID:18337823). This antibody is specific to PKM1 isoform.

## Publications notables

Autrice	Pubmed ID	Journal	Application
Stefano Miglietta	36287116	Noncoding RNA	WB
Bo Ma	30235220	PLoS One	WB
Di Huang	30224822	Nat Immunol	

## Stockage

Stockage:

Stocker à -20°C. Stable pendant un an après l'expédition.

Tampon de stockage:

PBS avec azoture de sodium à 0,02 % et glycérol à 50 % pH 7,3

L'aliquotage n'est pas nécessaire pour le stockage à -20C

\*\*\* Les 20ul contiennent 0,1% de BSA.

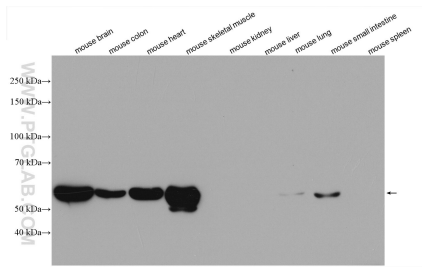
For technical support and original validation data for this product please contact:

T: 1 (888) 4PTGLAB (1-888-478-4522) (toll free in USA), or 1(312) 455-8498 (outside USA)

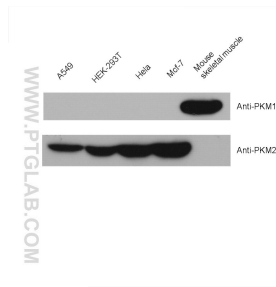
E: proteintech@ptglab.com  
W: ptglab.com

This product is exclusively available under Proteintech Group brand and is not available to purchase from any other manufacturer.

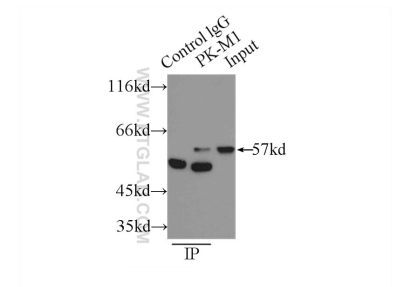
## Données de validation sélectionnées



Various lysates were subjected to SDS PAGE followed by western blot with 15821-1-AP (PKM1-specific antibody) at dilution of 1:2000 incubated at room temperature for 1.5 hours.



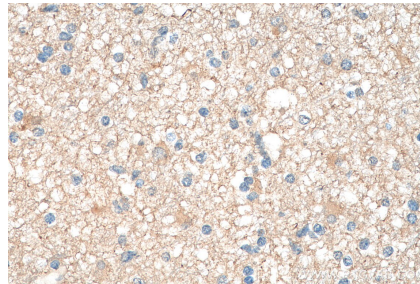
mouse skeletal muscle tissue were subjected to SDS PAGE followed by western blot with 15821-1-AP (PKM1-specific antibody) at dilution of 1:2000 incubated at room temperature for 1.5 hours.



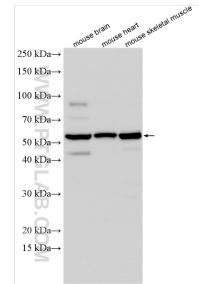
IP Result of anti-PKM1-specific (IP:15821-1-AP, 3ug; Detection:15821-1-AP 1:1000) with mouse brain tissue lysate 4000ug.



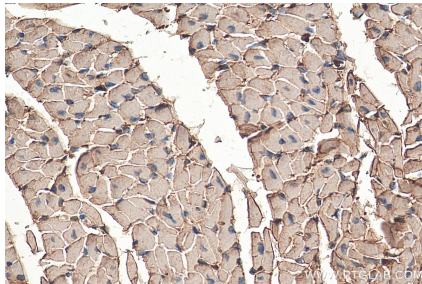
Immunohistochemical analysis of paraffin-embedded human gliomas tissue slide using 15821-1-AP (PKM1-specific antibody) at dilution of 1:200 (under 10x lens). Heat mediated antigen retrieval with Tris-EDTA buffer (pH 9.0).



Immunohistochemical analysis of paraffin-embedded human gliomas tissue slide using 15821-1-AP (PKM1-specific antibody) at dilution of 1:200 (under 40x lens). Heat mediated antigen retrieval with Tris-EDTA buffer (pH 9.0).



Various lysates were subjected to SDS PAGE followed by western blot with 15821-1-AP (PKM1-specific antibody) at dilution of 1:15000 incubated at room temperature for 1.5 hours.



Immunohistochemical analysis of paraffin-embedded mouse heart tissue slide using 15821-1-AP (PKM1-specific antibody) at dilution of 1:200 (under 40x lens). Heat mediated antigen retrieval with Tris-EDTA buffer (pH 9.0).