

À des fins de recherche uniquement

Anticorps Polyclonal de lapin anti-PKM2-specific



Numéro de catalogue: 15822-1-AP

Phare

153 Publications

Informations de base

Numéro de catalogue:

15822-1-AP

Taille:

150ul, Concentration: 600 µg/ml by Nanodrop;

Hôte:

Lapin

Isotype:

IgG

Numéro d'acquisition GenBank:

NM_002654

Identification du gène (NCBI):

5315

Nom complet:

PKM pyruvate kinase, muscle

MW calculé

58 kDa

MW observés:

58 kDa

Méthode de purification:

Purification par affinité contre l'antigène

Dilutions recommandées:

WB 1:1000-1:4000

IP 0.5-4.0 µg for IP and 1:1000-1:8000 for WB

IHC 1:100-1:400

IF 1:10-1:100

Applications

Applications testées:

IF, IHC, IP, WB, ELISA

Demandes citées:

ChIP, CoIP, IF, IHC, IP, WB

Spécificité de l'espèce:

Humain, souris

Espèces citées:

Humain, poulet, rat, souris

Remarque-IHC: il est suggéré de démasquer l'antigène avec un tampon de TE buffer pH 9.0; (*) À défaut, 'le démasquage de l'antigène peut être effectué avec un tampon citrate pH 6,0.

Contrôles positifs:

WB : cellules A549, cellules HEK-293, cellules HEK-293T, cellules HeLa, cellules MCF-7, Protéine recombinante, tissu cérébral de souris, tissu d'estomac de souris

IP : cellules A549, cellules MCF-7

IHC : tissu de cancer du poumon humain, tissu de cancer du côlon humain

IF : cellules MCF-7,

Informations générales

PKM, also named as OIP3, PK2, PK3, PKM, p58, THBP1, CTHBP and Tumor M2-PK, belongs to the pyruvate kinase family. It is glycolytic enzyme that catalyzes the transfer of a phosphoryl group from phosphoenolpyruvate (PEP) to ADP, generating ATP. It stimulates POU5F1-mediated transcriptional activation. PKM plays a general role in caspase independent cell death of tumor cells. PKM has 2 isoforms named as PKM1/M2. The activity of the M2 isoform (but not the M1 isoform) can be inhibited by tyrosine kinase signalling in tumour cells. The primary pyruvate kinase isoform before tumour development is PK-M1; however, the primary isoform from four independent tumours is PK-M2 (PMID:18337823). The immunogen of this antibody is M2 isoform and this antibody is specific to PKM2 isoform.

Publications notables

Autrice	Pubmed ID	Journal	Application
Xiao Liang	36212974	Evid Based Complement Alternat Med	IF
Peng Yang	30259036	Food Funct	WB
Stefano Miglietta	36287116	Noncoding RNA	WB

Stockage

Stockage:

Stocker à -20°C. Stable pendant un an après l'expédition.

Tampon de stockage:

PBS avec azoture de sodium à 0,02 % et glycérol à 50 % pH 7,3

L'aliquotage n'est pas nécessaire pour le stockage à -20C

*** Les 20ul contiennent 0,1% de BSA.

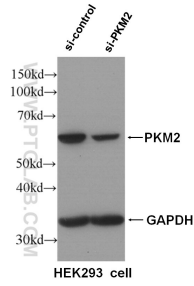
For technical support and original validation data for this product please contact:

T: 1 (888) 4PTGLAB (1-888-478-4522) (toll free in USA), or 1(312) 455-8498 (outside USA)

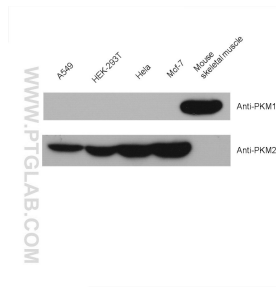
E: proteintech@ptglab.com
W: ptglab.com

This product is exclusively available under Proteintech Group brand and is not available to purchase from any other manufacturer.

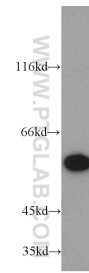
Données de validation sélectionnées



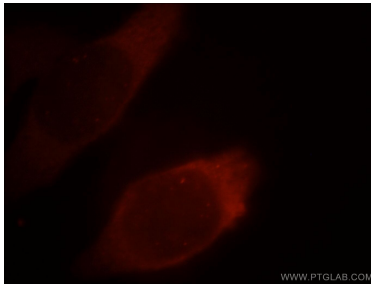
WB result of PKM2 specific antibody (15822-1-AP, 1:5000) with si-control and si-PKM2 transfected HEK293 cells.



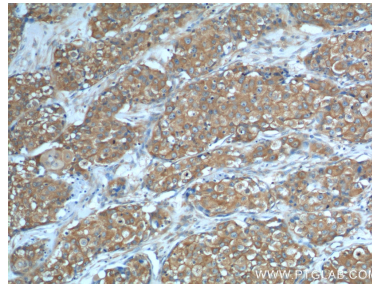
Various lysates were subjected to SDS PAGE followed by western blot with 15822-1-AP (PKM2-specific antibody) at dilution of 1:2000 incubated at room temperature for 1.5 hours.



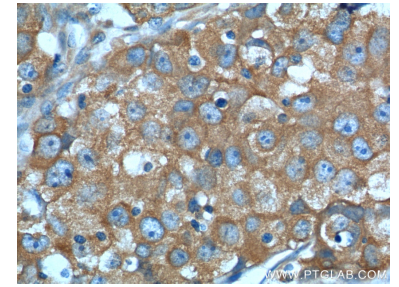
MCF7 cells were subjected to SDS PAGE followed by western blot with 15822-1-AP (PKM2-specific antibody) at dilution of 1:1500 incubated at room temperature for 1.5 hours.



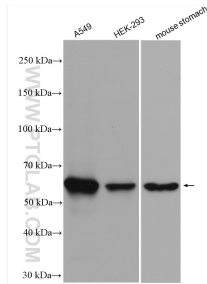
Immunofluorescent analysis of MCF-7 cells, using PKM2 antibody 19060-1-AP at 1:25 dilution and Rhodamine-labeled goat anti-rabbit IgG (red).



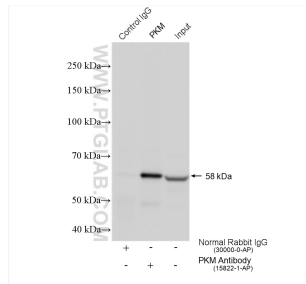
Immunohistochemical analysis of paraffin-embedded human lung cancer tissue slide using 15822-1-AP (PKM2-specific antibody at dilution of 1:200 (under 10x lens).



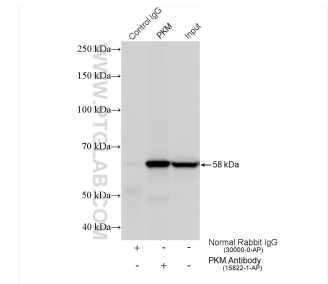
Immunohistochemical analysis of paraffin-embedded human lung cancer tissue slide using 15822-1-AP (PKM2-specific antibody at dilution of 1:200 (under 40x lens).



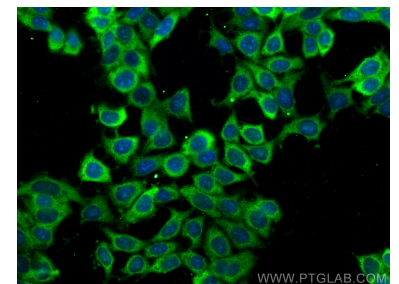
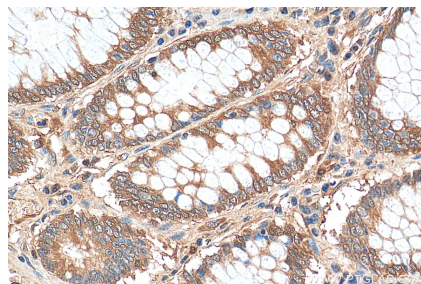
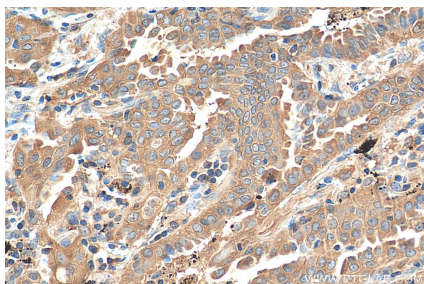
Various lysates were subjected to SDS PAGE followed by western blot with 15822-1-AP (PKM2-specific antibody) at dilution of 1:1500 incubated at room temperature for 1.5 hours.



IP result of anti-PKM2-specific (IP:15822-1-AP, 4ug; Detection:15822-1-AP 1:4000) with A549 cells lysate 920 ug.



IP result of anti-PKM2-specific (IP:15822-1-AP, 4ug; Detection:15822-1-AP 1:2000) with MCF-7 cells lysate 1880 ug.



Immunohistochemical analysis of paraffin-embedded human lung cancer tissue slide using 15822-1-AP (PKM2-specific antibody) at dilution of 1:200 (under 40x lens). Heat mediated antigen retrieval with Tris-EDTA buffer (pH 9.0).

Immunohistochemical analysis of paraffin-embedded human colon cancer tissue slide using 15822-1-AP (PKM2-specific antibody) at dilution of 1:200 (under 40x lens). Heat mediated antigen retrieval with Tris-EDTA buffer (pH 9.0).

Immunofluorescent analysis of (-20°C Ethanol) fixed MCF-7 cells using PKM2-specific antibody (15822-1-AP) at dilution of 1:200 and CoraLite®488-Conjugated AffiniPure Goat Anti-Rabbit IgG(H+L).