

À des fins de recherche uniquement

Anticorps Polyclonal de lapin anti-SF3A1



Numéro de catalogue: 15858-1-AP

3 Publications

Informations de base

Numéro de catalogue:

15858-1-AP

Taille:

150ul, Concentration: 500 µg/ml by Nanodrop and 300 µg/ml by Bradford method using BSA as the standard;

Hôte:

Lapin

Isotype:

IgG

Immunogen Catalog Number:

AG8196

Numéro d'acquisition GenBank:

BC007684

Identification du gène (NCBI):

10291

Nom complet:

splicing factor 3a, subunit 1, 120kDa

MW calculé

793 aa, 89 kDa

MW observés:

120-130 kDa

Méthode de purification:

Purification par affinité contre l'antigène

Dilutions recommandées:

WB 1:2000-1:10000

IP 0.5-4.0 ug for IP and 1:500-1:1000 for WB

IHC 1:20-1:200

IF 1:10-1:100

Applications

Applications testées:

IF, IHC, IP, WB, ELISA

Demandes citées:

IP, WB

Spécificité de l'espèce:

Humain, rat, souris

Espèces citées:

Humain, souris

Remarque-IHC: il est suggéré de démasquer l'antigène avec un tampon de TE buffer pH 9,0; (*) A défaut, 'le démasquage de l'antigène peut être effectué avec un tampon citrate pH 6,0.

Contrôles positifs:

WB : cellules HL-60, cellules HEK-293, cellules HeLa, cellules K-562, tissu cérébral de souris, tissu pulmonaire de souris

IP : tissu cérébral de souris,

IHC : tissu de cancer du sein humain,

IF : cellules HepG2,

Informations générales

SF3A1, also known as SF3a120, is a 793 amino acid protein, which is a Subunit of the splicing factor SF3A required for 'A' complex assembly formed by the stable binding of U2 snRNP to the branchpoint sequence (BPS) in pre-mRNA. SF3A1 also be involved in the assembly of the 'E' complex. The calculated molecular weight of SF3A1 is 88 kDa, but the modified SF3A1 is about 115-120 kDa. (PMID: 7489498)

Publications notables

Autrice	Pubmed ID	Journal	Application
Ni Li	36313296	Front Pharmacol	WB
Nir Kfir	25892229	Cell Rep	WB
Brian J Woo	37398273	bioRxiv	IP

Stockage

Stockage:

Stocker à -20°C. Stable pendant un an après l'expédition.

Tampon de stockage:

PBS avec azoture de sodium à 0,02 % et glycérol à 50 % pH 7,3

L'aliquotage n'est pas nécessaire pour le stockage à -20C

*** Les 20ul contiennent 0,1% de BSA.

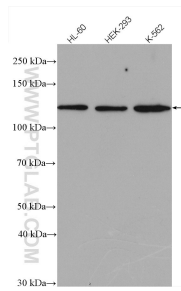
For technical support and original validation data for this product please contact:

T: 1 (888) 4PTGLAB (1-888-478-4522) (toll free in USA), or 1(312) 455-8498 (outside USA)

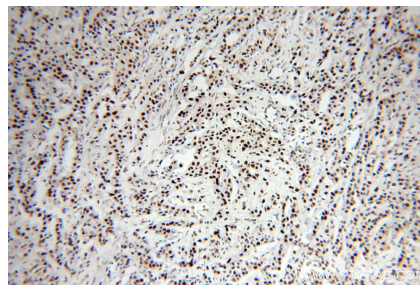
E: proteintech@ptglab.com
W: ptglab.com

This product is exclusively available under Proteintech Group brand and is not available to purchase from any other manufacturer.

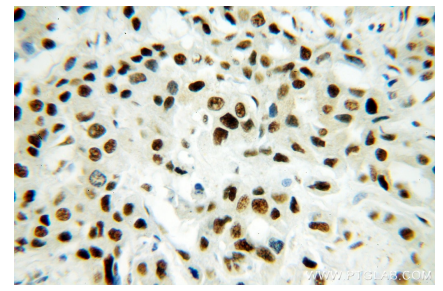
Données de validation sélectionnées



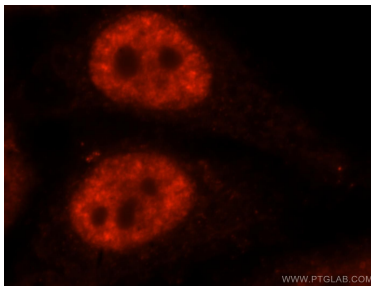
Various lysates were subjected to SDS PAGE followed by western blot with 15858-1-AP (SF3A1 antibody) at dilution of 1:5000 incubated at room temperature for 1.5 hours.



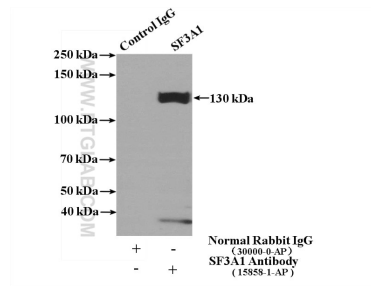
Immunohistochemical analysis of paraffin-embedded human breast cancer using 15858-1-AP (SF3A1 antibody) at dilution of 1:400 (under 10x lens).



Immunohistochemical analysis of paraffin-embedded human breast cancer using 15858-1-AP (SF3A1 antibody) at dilution of 1:400 (under 40x lens).



Immunofluorescent analysis of HepG2 cells, using SF3A1 antibody 15858-1-AP at 1:25 dilution and Rhodamine-labeled goat anti-rabbit IgG (red).



IP Result of anti-SF3A1 (IP:15858-1-AP, 4ug; Detection:15858-1-AP 1:500) with mouse brain tissue lysate 4000ug.