

À des fins de recherche uniquement

Anticorps Polyclonal de lapin anti-CAP2



Numéro de catalogue: 15865-1-AP

Phare

4 Publications

Informations de base

Numéro de catalogue:

15865-1-AP

Taille:

150ul, Concentration: 260 µg/ml by Nanodrop and 187 µg/ml by Bradford method using BSA as the standard;

Hôte:

Lapin

Isotype:

IgG

Immunogen Catalog Number:

AG8477

Numéro d'acquisition GenBank:

BC008481

Identification du gène (NCBI):

10486

Nom complet:

CAP, adenylate cyclase-associated protein, 2 (yeast)

MW calculé

477 aa, 53 kDa

MW observés:

53 kDa

Méthode de purification:

Purification par affinité contre l'antigène

Dilutions recommandées:

WB 1:1000-1:6000

IP 0.5-4.0 ug for IP and 1:500-1:2000 for WB

IHC 1:20-1:200

IF 1:50-1:500

Applications

Applications testées:

IF, IHC, IP, WB, ELISA

Demandes citées:

IF, WB

Spécificité de l'espèce:

Humain, rat, souris

Espèces citées:

Humain, rat, souris

Remarque-IHC: il est suggéré de démasquer l'antigène avec un tampon de TE buffer pH 9,0; (*) A défaut, 'le démasquage de l'antigène peut être 'effectué avec un tampon citrate pH 6,0.

Contrôles positifs:

WB: cellules PC-3, cellules HepG2, tissu cardiaque de souris, tissu de muscle squelettique de souris, tissu rénal de souris, tissu rénal humain, tissu testiculaire de rat, tissu testiculaire de souris

IP: tissu testiculaire de souris,

IHC: tissu de cancer du foie humain, tissu de muscle squelettique humain

IF: cellules U2OS,

Informations générales

CAPs (CAP1 and CAP2) are evolutionarily conserved proteins with roles in regulating the actin cytoskeleton and in signal transduction. CAP2 is predominantly expressed in brain, heart and skeletal muscle, and skin. It is found in the nucleus in undifferentiated myoblasts and at the M-line of differentiated myotubes. Overexpression of CAP2 has been reported in many cancers, including hepatocellular carcinoma (HCC), human breast cancer, and malignant melanoma.

Publications notables

| Autrice | Pubmed ID | Journal | Application |
|------------------|-----------|---------------|-------------|
| Mert Colpan | 33742108 | Commun Biol | WB,IF |
| Anna Di Maio | 35163460 | Int J Mol Sci | WB |
| Lara-Jane Kepser | 33637797 | Sci Rep | WB |

Stockage

Stockage:

Stocker à -20°C. Stable pendant un an après l'expédition.

Tampon de stockage:

PBS avec azoture de sodium à 0,02 % et glycérol à 50 % pH 7,3

L'aliquotage n'est pas nécessaire pour le stockage à -20C

*** Les 20ul contiennent 0,1% de BSA.

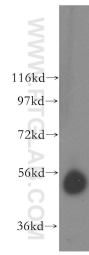
For technical support and original validation data for this product please contact:

T: 1 (888) 4PTGLAB (1-888-478-4522) (toll free in USA), or 1(312) 455-8498 (outside USA)

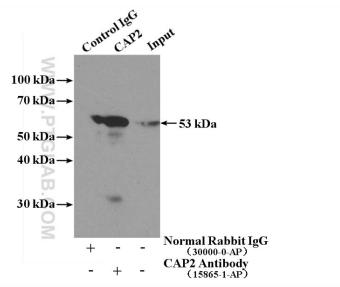
E: proteintech@ptglab.com
W: ptglab.com

This product is exclusively available under Proteintech Group brand and is not available to purchase from any other manufacturer.

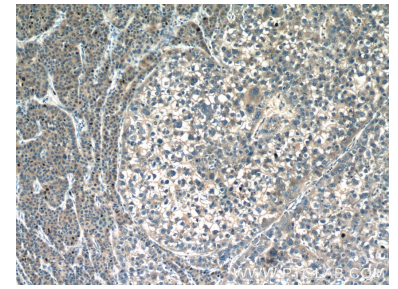
Données de validation sélectionnées



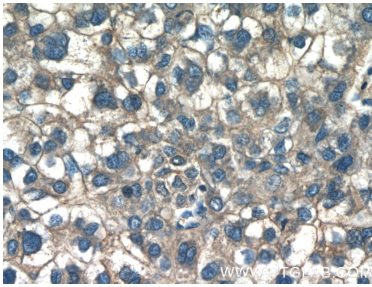
human kidney tissue were subjected to SDS PAGE followed by western blot with 15865-1-AP (CAP2 antibody) at dilution of 1:400 incubated at room temperature for 1.5 hours.



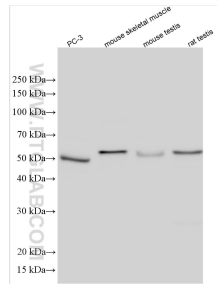
IP Result of anti-CAP2 (IP:15865-1-AP, 4ug; Detection:15865-1-AP 1:1000) with mouse testis tissue lysate 4000ug.



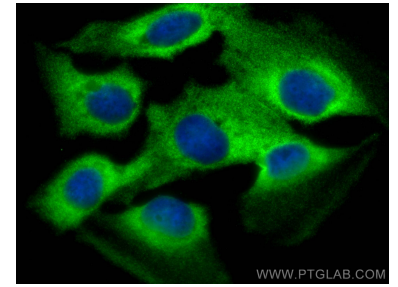
Immunohistochemical analysis of paraffin-embedded human liver cancer tissue slide using 15865-1-AP (CAP2 Antibody) at dilution of 1:50 (under 10x lens).



Immunohistochemical analysis of paraffin-embedded human liver cancer tissue slide using 15865-1-AP (CAP2 Antibody) at dilution of 1:50 (under 40x lens).



Various lysates were subjected to SDS PAGE followed by western blot with 15865-1-AP (CAP2 antibody) at dilution of 1:3000 incubated at room temperature for 1.5 hours.



Immunofluorescent analysis of (-20°C Methanol) fixed U2OS cells using CAP2 antibody (15865-1-AP) at dilution of 1:200 and CoraLite®488-Conjugated AffiniPure Goat Anti-Rabbit IgG(H+L).