

À des fins de recherche uniquement

Anticorps Polyclonal de lapin anti-SPANXE



Numéro de catalogue: 15870-1-AP

Informations de base

| | | |
|---|--|--|
| Numéro de catalogue: 15870-1-AP | Numéro d'acquisition GenBank: BC005382 | Méthode de purification: Purification par affinité contre l'antigène |
| Taille: 150ul, Concentration: 150 µg/ml by Nanodrop and 147 µg/ml by Bradford method using BSA as the standard; | Identification du gène (NCBI): 171489 | Dilutions recommandées: WB 1:200-1:1000 IF 1:20-1:200 |
| Hôte: Lapin | Nom complet: SPANX family, member E | |
| Isotype: IgG | MW calculé 97 aa, 11 kDa | |
| Immunogen Catalog Number: AG8572 | MW observés: 15-20 kDa | |

Applications

| | |
|---|---|
| Applications testées: IF, WB, ELISA | Contrôles positifs: WB : cellules A375, tissu cutané de souris IF : cellules A375, |
| Spécificité de l'espèce: Humain | |

Informations générales

SPANXE (Sperm protein associated with the nucleus on the X chromosome E), also known as SPANX A2 or SPANX C, is a member of the SPANX family. The SPANX genes encode differentially expressed testis-specific proteins that localize to various subcellular compartments. This particular gene encodes a sperm protein that contains a consensus nuclear localization signal but, although a role in spermatogenesis is suggested, the specific function of this family member has not yet been determined.

Stockage

Stockage:
Stocker à -20°C. Stable pendant un an après l'expédition.
Tampon de stockage:
PBS avec azoture de sodium à 0,02 % et glycérol à 50 % pH 7,3
L'aliquotage n'est pas nécessaire pour le stockage à -20C

*** Les 20ul contiennent 0,1% de BSA.

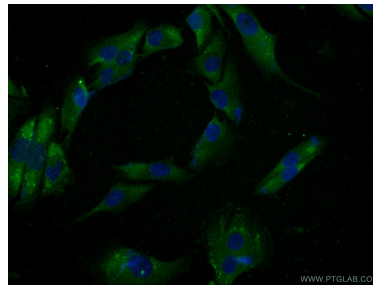
For technical support and original validation data for this product please contact:

T: 1 (888) 4PTGLAB (1-888-478-4522) (toll free in USA), or 1(312) 455-8498 (outside USA)

E: proteintech@ptglab.com
W: ptglab.com

This product is exclusively available under Proteintech Group brand and is not available to purchase from any other manufacturer.

Données de validation sélectionnées



A375 cells were subjected to SDS PAGE followed by western blot with 15870-1-AP (SPANXE antibody) at dilution of 1:300 incubated at room temperature for 1.5 hours.

Immunofluorescent analysis of A375 cells using 15870-1-AP (SPANXE antibody) at dilution of 1:50 and Alexa Fluor 488-conjugated AffiniPure Goat Anti-Rabbit IgG(H+L).