

À des fins de recherche uniquement

# Anticorps Polyclonal de lapin anti-Glycophorin A



Numéro de catalogue: 15874-1-AP

## Informations de base

<b>Numéro de catalogue:</b> 15874-1-AP	<b>Numéro d'acquisition GenBank:</b> BC005319	<b>Méthode de purification:</b> Purification par affinité contre l'antigène
<b>Taille:</b> 150ul, Concentration: 650 µg/ml by Nanodrop and 333 µg/ml by Bradford method using BSA as the standard;	<b>Identification du gène (NCBI):</b> 2993	<b>Dilutions recommandées:</b> WB 1:500-1:1000 IHC 1:50-1:500 IF 1:300-1:1200
<b>Hôte:</b> Lapin	<b>Nom complet:</b> glycophorin A (MNS blood group)	
<b>Isotype:</b> IgG	<b>MW calculé:</b> 150 aa, 16 kDa	
<b>Immunogen Catalog Number:</b> AG8635	<b>MW observés:</b> 36-38 kDa	

## Applications

**Applications testées:**  
FC, IF, IHC, WB, ELISA

**Spécificité de l'espèce:**  
Humain

**Remarque-IHC: il est suggéré de démasquer l'antigène avec un tampon de TE buffer pH 9.0; (\*) À défaut, le démasquage de l'antigène peut être effectué avec un tampon citrate pH 6,0.**

**Contrôles positifs:**

WB : cellules K-562,

IHC : tissu splénique humain, tissu de cancer du côlon humain, tissu pulmonaire humain

IF : tissu placentaire humain,

## Informations générales

Glycophorin A (GYPA) is the major transmembrane sialoglycoprotein in erythrocytes. It is a dimeric type I transmembrane protein carrying 15 closely clustered O-linked tetrasaccharides capped with sialic acid/N-acetylneuraminic acid (Neu5Ac). This 36 kDa protein represents the major sialoglycoprotein of the red blood cell membrane displaying about one million copies per cell. (PMID: 9490702)

## Stockage

**Stockage:**

Stocker à -20°C. Stable pendant un an après l'expédition.

**Tampon de stockage:**

PBS avec azoture de sodium à 0,02 % et glycérol à 50 % pH 7,3

L'aliquotage n'est pas nécessaire pour le stockage à -20C

\*\*\* Les 20ul contiennent 0,1% de BSA.

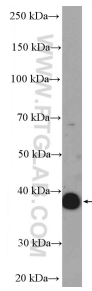
For technical support and original validation data for this product please contact:

T: 1 (888) 4PTGLAB (1-888-478-4522) (toll free in USA), or 1(312) 455-8498 (outside USA)

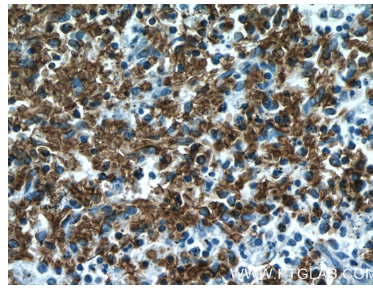
E: proteintech@ptglab.com  
W: ptglab.com

This product is exclusively available under Proteintech Group brand and is not available to purchase from any other manufacturer.

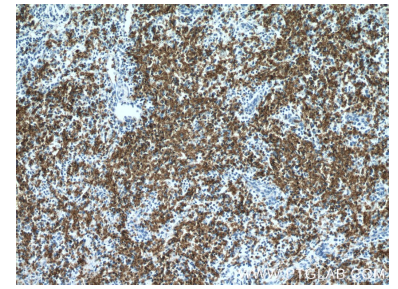
## Données de validation sélectionnées



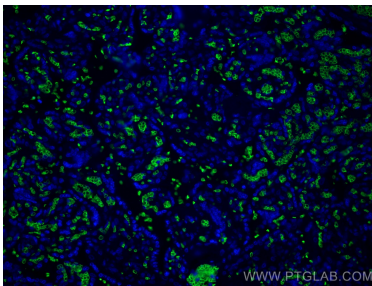
K-562 cells were subjected to SDS PAGE followed by western blot with 15874-1-AP (Glycophorin A antibody) at dilution of 1:600 incubated at room temperature for 1.5 hours.



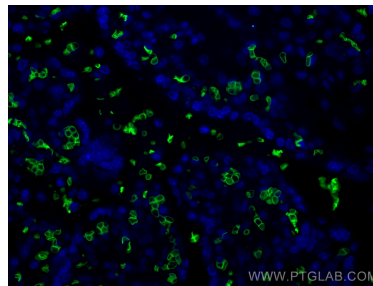
Immunohistochemical analysis of paraffin-embedded human spleen tissue slide using 15874-1-AP (Glycophorin A antibody) at dilution of 1:200 (under 40x lens).



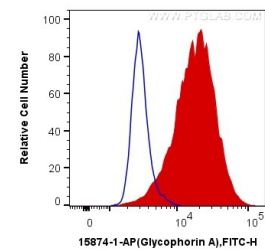
Immunohistochemical analysis of paraffin-embedded human spleen tissue slide using 15874-1-AP (Glycophorin A antibody) at dilution of 1:200 (under 10x lens).



Immunofluorescent analysis of (4% PFA) fixed human placenta tissue using Glycophorin A antibody (15874-1-AP) at dilution of 1:600 and CoraLite®488-Conjugated AffiniPure Goat Anti-Rabbit IgG(H+L).



Immunofluorescent analysis of (4% PFA) fixed human placenta tissue using Glycophorin A antibody (15874-1-AP) at dilution of 1:600 and CoraLite®488-Conjugated AffiniPure Goat Anti-Rabbit IgG(H+L).



$1 \times 10^6$  K-562 cells were intracellularly stained with 0.4 ug Anti-Human Glycophorin A (15874-1-AP) and CoraLite®488-Conjugated AffiniPure Goat Anti-Rabbit IgG(H+L) at dilution 1:1000 (red), or 0.4 ug Control Antibody. Cells were fixed with 4% PFA and permeabilized with Flow Cytometry Perm Buffer (PF00011-C).