

À des fins de recherche uniquement

# Anticorps Polyclonal de lapin anti-Sorbitol dehydrogenase



Numéro de catalogue: 15881-1-AP

Phare

4 Publications

## Informations de base

Numéro de catalogue:

15881-1-AP

Taille:

150ul, Concentration: 400 µg/ml by Nanodrop and 273 µg/ml by Bradford method using BSA as the standard;

Hôte:

Lapin

Isotype:

IgG

Immunogen Catalog Number:

AG8651

Numéro d'acquisition GenBank:

BC021085

Identification du gène (NCBI):

6652

Nom complet:

sorbitol dehydrogenase

MW calculé

357 aa, 38 kDa

MW observés:

38 kDa

Méthode de purification:

Purification par affinité contre l'antigène

Dilutions recommandées:

WB 1:2000-1:16000

IP 0.5-4.0 ug for IP and 1:500-1:2000 for WB

## Applications

Applications testées:

IP, WB, ELISA

Demandes citées:

IF, WB

Spécificité de l'espèce:

Humain, rat, souris

Espèces citées:

rat, souris

Contrôles positifs:

WB : cellules HeLa, tissu hépatique de rat, tissu hépatique de souris, tissu rénal humain

IP : tissu hépatique de souris,

## Informations générales

SORD (Sorbitol dehydrogenase) is also named as L-iditol 2-dehydrogenase and belongs to the zinc-containing alcohol dehydrogenase family. It catalyzes the interconversion of polyols and their corresponding ketoses, and together with aldose reductase, makes up the sorbitol pathway that is believed to play an important role in the development of diabetic complications. This protein can form a homotetramer (PMID:12962626). Measurement of SORD is a specific indicator of liver cell damage and parenchymal.

## Publications notables

Autrice	Pubmed ID	Journal	Application
Yu Sun	29349500	J Mol Med (Berl)	WB
Jingbo Dai	26647419	Reproduction	WB, IF
Yining Liu	36878459	Chem Biol Interact	WB

## Stockage

Stockage:

Stocker à -20°C. Stable pendant un an après l'expédition.

Tampon de stockage:

PBS avec azoture de sodium à 0,02 % et glycérol à 50 % pH 7,3

L'aliquotage n'est pas nécessaire pour le stockage à -20C

\*\*\* Les 20ul contiennent 0,1% de BSA.

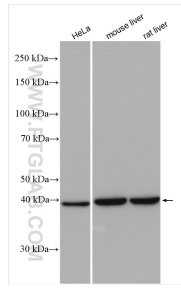
For technical support and original validation data for this product please contact:

T: 1 (888) 4PTGLAB (1-888-478-4522) (toll free in USA), or 1(312) 455-8498 (outside USA)

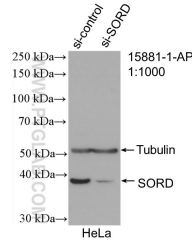
E: [proteintech@ptglab.com](mailto:proteintech@ptglab.com)  
W: [ptglab.com](http://ptglab.com)

This product is exclusively available under Proteintech Group brand and is not available to purchase from any other manufacturer.

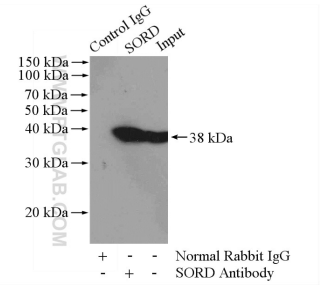
## Données de validation sélectionnées



Various lysates were subjected to SDS PAGE followed by western blot with 15881-1-AP (Sorbitol dehydrogenase antibody) at dilution of 1:8000 incubated at room temperature for 1.5 hours.



WB result of Sorbitol dehydrogenase antibody (15881-1-AP; 1:1000; incubated at room temperature for 1.5 hours) with sh-Control and sh-Sorbitol dehydrogenase transfected HeLa cells.



IP Result of anti-Sorbitol dehydrogenase (IP:15881-1-AP, 4ug; Detection:15881-1-AP 1:1000) with mouse liver tissue lysate 4000ug.