

À des fins de recherche uniquement

Anticorps Polyclonal de lapin anti-PPP2R1A



Numéro de catalogue: 15882-1-AP

6 Publications

Informations de base

Numéro de catalogue:

15882-1-AP

Taille:

150ul, Concentration: 160 µg/ml by Bradford method using BSA as the standard;

Hôte:

Lapin

Isotype:

IgG

Immunogen Catalog Number:

AG8661

Numéro d'acquisition GenBank:

BC001537

Identification du gène (NCBI):

5518

Nom complet:

protein phosphatase 2 (formerly 2A), regulatory subunit A, alpha isoform

MW calculé

589 aa, 65 kDa

MW observés:

65 kDa

Méthode de purification:

Purification par affinité contre l'antigène

Dilutions recommandées:

WB 1:500-1:2000

IP 0.5-4.0 ug for IP and 1:200-1:1000 for WB

IHC 1:20-1:200

Applications

Applications testées:

IHC, IP, WB, ELISA

Demandes citées:

ColP, WB

Spécificité de l'espèce:

Humain, rat, souris

Espèces citées:

Humain, porc, souris

Remarque-IHC: il est suggéré de démasquer l'antigène avec un tampon de TE buffer pH 9,0; (*) A défaut, 'le démasquage de l'antigène peut être effectué avec un tampon citrate pH 6,0.

Contrôles positifs:

WB : tissu hépatique de rat, cellules A431, cellules HepG2, cellules LO2, cellules SMMC-7721, tissu hépatique de souris, tissu rénal de souris

IP : cellules HepG2,

IHC : tissu rénal humain, tissu de tumeur ovarienne humain

Informations générales

PPP2R1A belongs to the phosphatase 2A regulatory subunit A family. PPP2R1A encodes the α -isoform of the scaffolding subunit of the serine/threonine protein phosphatase 2A (PP2A) holoenzyme. This tumour suppressor complex is involved in growth and survival pathways and PPP2R1A mutations in endometrial high-grade serous carcinomas are a frequent and potentially targetable feature of this disease (PMID: 21381030). The PPP2R1A gene has 86% identity with the PPP2R1B gene (PMID: 7681822).

Publications notables

Autrice	Pubmed ID	Journal	Application
Hai Zheng	33243860	Science	WB
Changsheng Jiang	36094311	Microbiol Spectr	WB, ColP
Shibin Hu	34534457	Mol Cell	WB

Stockage

Stockage:

Stocker à -20°C. Stable pendant un an après l'expédition.

Tampon de stockage:

PBS avec azoture de sodium à 0,02 % et glycérol à 50 % pH 7,3

L'aliquotage n'est pas nécessaire pour le stockage à -20C

*** Les 20ul contiennent 0,1% de BSA.

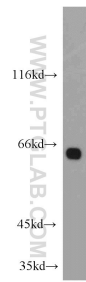
For technical support and original validation data for this product please contact:

T: 1 (888) 4PTGLAB (1-888-478-4522) (toll free in USA), or 1(312) 455-8498 (outside USA)

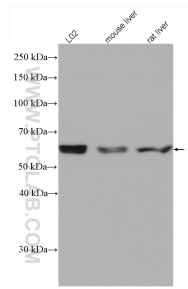
E: proteintech@ptglab.com
W: ptglab.com

This product is exclusively available under Proteintech Group brand and is not available to purchase from any other manufacturer.

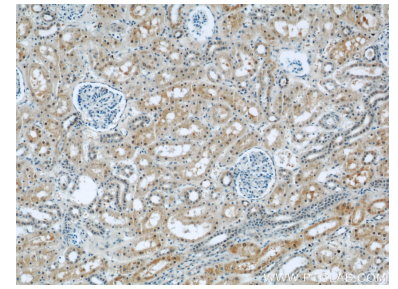
Données de validation sélectionnées



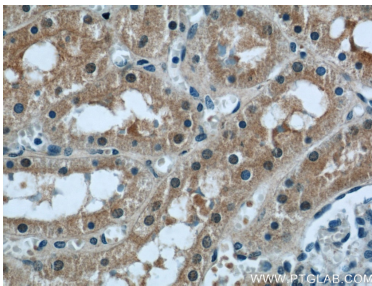
mouse kidney tissue were subjected to SDS PAGE followed by western blot with 15882-1-AP (PPP2R1A antibody) at dilution of 1:800 incubated at room temperature for 1.5 hours.



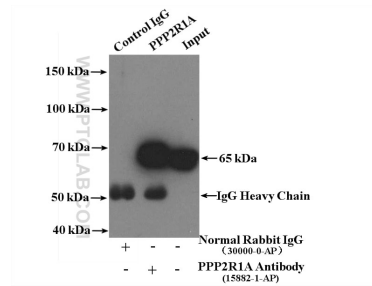
Various lysates were subjected to SDS PAGE followed by western blot with 15882-1-AP (PPP2R1A antibody) at dilution of 1:1000 incubated at room temperature for 1.5 hours.



Immunohistochemical analysis of paraffin-embedded human kidney using 15882-1-AP (PPP2R1A antibody) at dilution of 1:50 (under 10x lens).



Immunohistochemical analysis of paraffin-embedded human kidney using 15882-1-AP (PPP2R1A antibody) at dilution of 1:50 (under 40x lens).



IP Result of anti-PPP2R1A (IP:15882-1-AP, 4ug; Detection:15882-1-AP 1:300) with HepG2 cells lysate 3200ug.