

À des fins de recherche uniquement

Anticorps Polyclonal de lapin anti-CKM/CKB



Numéro de catalogue: 15891-1-AP

3 Publications

Informations de base

Numéro de catalogue:

15891-1-AP

Taille:

150ul, Concentration: 350 µg/ml by Nanodrop and 267 µg/ml by Bradford method using BSA as the standard;

Hôte:

Lapin

Isotype:

IgG

Immunogen Catalog Number:

AG8678

Numéro d'acquisition GenBank:

BC007462

Identification du gène (NCBI):

1158

Nom complet:

creatine kinase, muscle

MW calculé

381 aa, 43 kDa

MW observés:

43 kDa

Méthode de purification:

Purification par affinité contre l'antigène

Dilutions recommandées:

WB 1:5000-1:50000

IHC 1:50-1:500

Applications

Applications testées:

IHC, WB, ELISA

Demandes citées:

WB

Spécificité de l'espèce:

Humain, souris

Espèces citées:

Humain, rat

Remarque-IHC: il est suggéré de démasquer l'antigène avec un tampon de TE buffer pH 9,0; (*) A défaut, le démasquage de l'antigène peut être effectué avec un tampon citrate pH 6,0.

Contrôles positifs:

WB : tissu cardiaque de souris, tissu cérébral de souris, tissu de muscle squelettique de souris

IHC : tissu cardiaque de souris, tissu cardiaque de rat

Informations générales

Creatine Kinase, an enzyme important for energy metabolism in cells of high and fluctuating energy requirements, catalyses the reversible transfer of a phosphoryl group from phosphocreatine to ADP. CK isoenzymes (muscle, brain, sarcomeric, Ubiquitous-type) play a central role in energy transduction in tissues with large, fluctuating energy demands, such as skeletal muscle, heart, brain and spermatozoa. Inactivation of creatine kinase by gliotoxin was accompanied by the formation of a 37-kDa form of the enzyme. This oxidized form of creatine kinase was rapidly reconverted to the 42-kDa species by the addition of reducing agents concomitant with restoration of activity. (PMID: 10827185). This antibody can recognize both CKB and CKM due to the high homology.

Publications notables

Autrice	Pubmed ID	Journal	Application
Nao Tamai	32203066	Spinal Cord	WB
David W Russ	32646455	Lipids Health Dis	WB
Adel Al Fatease	31022465	Nanomedicine	WB

Stockage

Stockage:

Stocker à -20°C. Stable pendant un an après l'expédition.

Tampon de stockage:

PBS avec azoture de sodium à 0,02 % et glycérol à 50 % pH 7,3

L'aliquotage n'est pas nécessaire pour le stockage à -20C

*** Les 20ul contiennent 0,1% de BSA.

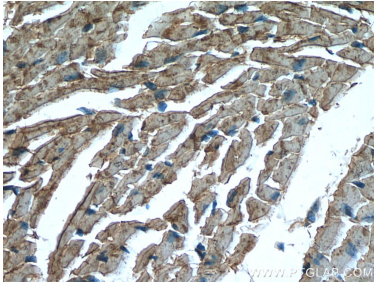
For technical support and original validation data for this product please contact:

T: 1 (888) 4PTGLAB (1-888-478-4522) (toll free in USA), or 1(312) 455-8498 (outside USA)

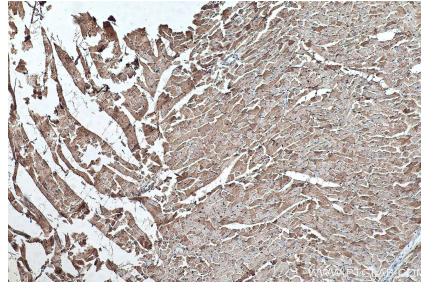
E: proteintech@ptglab.com
W: ptglab.com

This product is exclusively available under Proteintech Group brand and is not available to purchase from any other manufacturer.

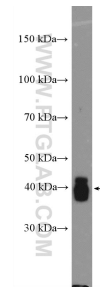
Données de validation sélectionnées



Immunohistochemical analysis of paraffin-embedded mouse heart tissue slide using 15891-1-AP (CKM/CKB antibody) at dilution of 1:200 (under 40x lens). Heat mediated antigen retrieval with Tris-EDTA buffer (pH 9.0).



Immunohistochemical analysis of paraffin-embedded rat heart tissue slide using 15891-1-AP (CKM/CKB antibody) at dilution of 1:1000 (under 10x lens). Heat mediated antigen retrieval with Tris-EDTA buffer (pH 9.0).



mouse heart tissue were subjected to SDS PAGE followed by western blot with 15891-1-AP (Creatine Kinase antibody at dilution of 1:20000 incubated at room temperature for 1.5 hours.