

À des fins de recherche uniquement

# Anticorps Polyclonal de lapin anti-SH3GLB2



Numéro de catalogue: 15897-1-AP

Phare

2 Publications

## Informations de base

Numéro de catalogue:  
15897-1-AP

Taille:  
150ul, Concentration: 213 µg/ml by  
Bradford method using BSA as the  
standard;

Hôte:  
Lapin

Isotype:  
IgG

Immunogen Catalog Number:  
AG8712

Numéro d'acquisition GenBank:  
BC014635

Identification du gène (NCBI):  
56904

Nom complet:  
SH3-domain GRB2-like endophilin B2

MW calculé  
395 aa, 44 kDa

MW observés:  
47-50 kDa

Méthode de purification:  
Purification par affinité contre  
l'antigène

Dilutions recommandées:  
WB 1:500-1:2000  
IP 0.5-4.0 ug for IP and 1:500-1:2000  
for WB  
IF 1:20-1:200

## Applications

Applications testées:  
IF, IP, WB, ELISA

Demandes citées:  
IF, WB

Spécificité de l'espèce:  
Humain, rat, souris

Espèces citées:  
Humain, souris

Contrôles positifs:

WB : cellules HeLa, tissu pulmonaire de rat, tissu  
pulmonaire de souris, tissu testiculaire de souris, tissu  
testiculaire humain

IP : cellules HeLa,

IF : cellules HeLa,

## Informations générales

SH3GLB2 is an endophilin-related protein family with 395-amino acid protein and contains an N-terminal domain, a central coiled-coil region, and a C-terminal SH3 domain. SH3GLB2 is expressed in many tissues, including skeletal muscle, adipocytes, brain, lung, colon, and mammary gland. SH3GLB2 was expressed in the cytoplasm of transfected HeLa cells and was excluded from nuclei (PMID: 11161816).

## Publications notables

Autrice	Pubmed ID	Journal	Application
David B Wang	30028551	Brain Pathol	WB
Jacob M Serfass	28455444	J Biol Chem	WB,IF

## Stockage

Stockage:

Stocker à -20°C. Stable pendant un an après l'expédition.

Tampon de stockage:

PBS avec azoture de sodium à 0,02 % et glycérol à 50 % pH 7,3

L'aliquotage n'est pas nécessaire pour le stockage à -20C

\*\*\* Les 20ul contiennent 0,1% de BSA.

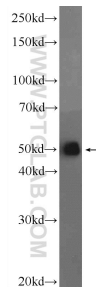
For technical support and original validation data for this product please contact:

T: 1 (888) 4PTGLAB (1-888-478-4522) (toll free  
in USA), or 1(312) 455-8498 (outside USA)

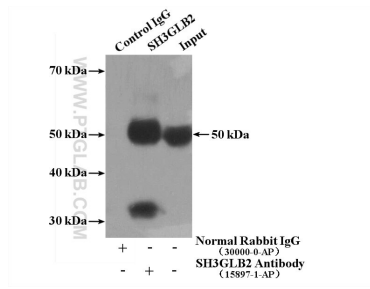
E: proteintech@ptglab.com  
W: ptglab.com

This product is exclusively available under Proteintech Group brand and is not available to purchase from any other manufacturer.

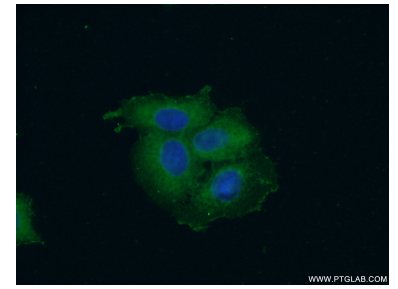
## Données de validation sélectionnées



HeLa cells were subjected to SDS PAGE followed by western blot with 15897-1-AP (SH3GLB2 Antibody) at dilution of 1:1000 incubated at room temperature for 1.5 hours.



IP Result of anti-SH3GLB2 (IP:15897-1-AP, 4ug; Detection:15897-1-AP 1:1000) with HeLa cells lysate 2600ug.



Immunofluorescent analysis of (-20°C Ethanol) fixed HeLa cells using 15897-1-AP (SH3GLB2 antibody) at dilution of 1:50 and Alexa Fluor 488-conjugated AffiniPure Goat Anti-Rabbit IgG(H+L).