

À des fins de recherche uniquement

Anticorps Polyclonal de lapin anti-GSTP1



Numéro de catalogue: 15902-1-AP

Phare

26 Publications

Informations de base

Numéro de catalogue:

15902-1-AP

Taille:

150ul, Concentration: 600 µg/ml by Nanodrop;

Hôte:

Lapin

Isotype:

IgG

Immunogen Catalog Number:

AG8731

Numéro d'acquisition GenBank:

BC010915

Identification du gène (NCBI):

2950

Nom complet:

glutathione S-transferase pi 1

MW calculé

210 aa, 23 kDa

MW observés:

23-28 kDa

Méthode de purification:

Purification par affinité contre l'antigène

Dilutions recommandées:

WB 1:2000-1:16000

IP 0.5-4.0 µg for IP and 1:500-1:1000 for WB

IHC 1:20-1:200

IF 1:20-1:200

Applications

Applications testées:

FC, IF, IHC, IP, WB, ELISA

Demandes citées:

IF, IHC, WB

Spécificité de l'espèce:

Humain, rat, souris

Espèces citées:

Humain, rat, souris

Remarque-IHC: il est suggéré de démasquer l'antigène avec un tampon de TE buffer pH 9,0; (*) À défaut, le démasquage de l'antigène peut être effectué avec un tampon citrate pH 6,0.

Contrôles positifs:

WB : cellules COLO 320, cellules HEK-293, cellules HeLa, cellules Jurkat, cellules K-562, cellules PC-3, tissu cardiaque de rat, tissu cardiaque de souris, tissu cérébral de rat, tissu cérébral de souris, tissu cérébral humain

IP : tissu cérébral de souris,

IHC : tissu cutané humain, tissu hépatique humain

IF : cellules HepG2,

Informations générales

Glutathione S-transferase P (GSTP1) conjugates reduced glutathione to a wide number of exogenous and endogenous hydrophobic electrophiles. It is involved in the formation of glutathione conjugates of both prostaglandin A2 (PGA2) and prostaglandin J2 (PGJ2) (PubMed:9084911). Participates in the formation of novel hepoxilin regioisomers (PubMed:21046276).

Publications notables

Autrice	Pubmed ID	Journal	Application
Lei Ye	33491741	Int J Oncol	WB
Shuo Chen	26396496	Drug Des Devel Ther	WB
Ming-Wei Lin	36135183	Curr Issues Mol Biol	WB

Stockage

Stockage:

Stocker à -20°C. Stable pendant un an après l'expédition.

Tampon de stockage:

PBS avec azoture de sodium à 0,02 % et glycérol à 50 % pH 7,3

L'aliquotage n'est pas nécessaire pour le stockage à -20C

*** Les 20ul contiennent 0,1% de BSA.

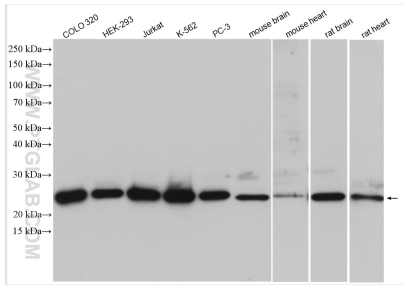
For technical support and original validation data for this product please contact:

T: 1 (888) 4PTGLAB (1-888-478-4522) (toll free in USA), or 1(312) 455-8498 (outside USA)

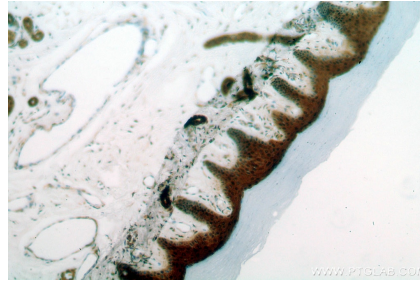
E: proteintech@ptglab.com
W: ptglab.com

This product is exclusively available under Proteintech Group brand and is not available to purchase from any other manufacturer.

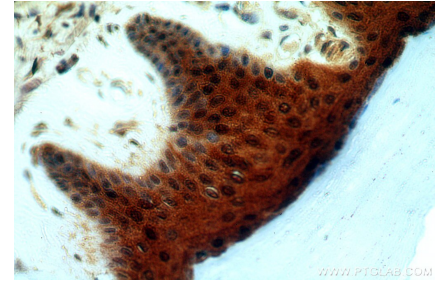
Données de validation sélectionnées



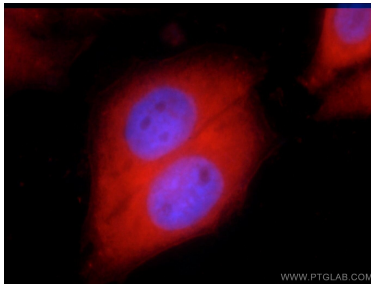
Various lysates were subjected to SDS PAGE followed by western blot with 15902-1-AP (GSTP1 antibody) at dilution of 1:8000 incubated at room temperature for 1.5 hours.



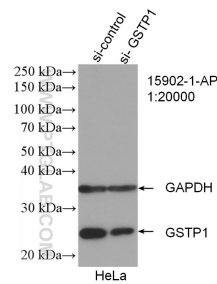
Immunohistochemical analysis of paraffin-embedded human skin using 15902-1-AP (GSTP1 antibody) at dilution of 1:100 (under 10x lens).



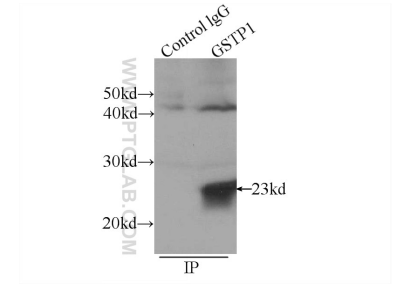
Immunohistochemical analysis of paraffin-embedded human skin using 15902-1-AP (GSTP1 antibody) at dilution of 1:100 (under 40x lens).



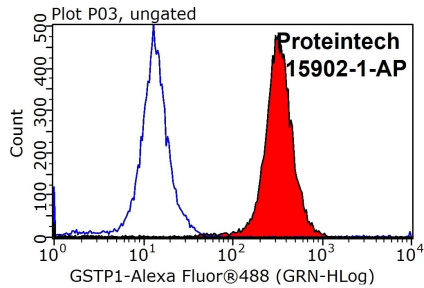
Immunofluorescent analysis of HepG2 cells using 15902-1-AP (GSTP1 Antibody) at dilution of 1:50 and Rhodamine-labeled goat anti-rabbit IgG (red).



WB result of GSTP1 antibody (15902-1-AP; 1:20000; incubated at room temperature for 1.5 hours) with sh-Control and sh-GSTP1 transfected HeLa cells.



IP Result of anti-GSTP1 (IP:15902-1-AP, 3ug; Detection:15902-1-AP 1:800) with mouse brain tissue lysate 4000ug.



1X10⁶ HepG2 cells were stained with 0.2ug GSTP1 antibody (15902-1-AP, red) and control antibody (blue). Fixed with 90% MeOH blocked with 3% BSA (30 min). Alexa Fluor 488-conjugated AffiniPure Goat Anti-Rabbit IgG(H+L) with dilution 1:1000.