

À des fins de recherche uniquement

Anticorps Polyclonal de lapin anti-RAB11A/B



Numéro de catalogue: 15903-1-AP

Phare

25 Publications

Informations de base

Numéro de catalogue:

15903-1-AP

Taille:

150ul, Concentration: 400 µg/ml by Nanodrop and 267 µg/ml by Bradford method using BSA as the standard;

Hôte:

Lapin

Isotype:

IgG

Immunogen Catalog Number:

AG8742

Numéro d'acquisition GenBank:

BC013348

Identification du gène (NCBI):

8766

Nom complet:

RAB11A, member RAS oncogene family

MW calculé

216 aa, 24 kDa

MW observés:

24 kDa

Méthode de purification:

Purification par affinité contre l'antigène

Dilutions recommandées:

WB 1:500-1:2000

IP 0.5-4.0 ug for IP and 1:500-1:1000 for WB

IHC 1:50-1:500

IF 1:200-1:800

Applications

Applications testées:

IF, IHC, IP, WB, ELISA

Demandes citées:

CoIP, IF, IHC, WB

Spécificité de l'espèce:

Humain, souris

Espèces citées:

canin, Humain, porc, singe, souris

Remarque-IHC: il est suggéré de démasquer l'antigène avec un tampon de TE buffer pH 9,0; (*) A défaut, 'le démasquage de l'antigène peut être 'effectué avec un tampon citrate pH 6,0.

Contrôles positifs:

WB : tissu splénique de souris, cellules HeLa, cellules Jurkat, cellules MCF-7, cellules SH-SY5Y

IP : tissu splénique de souris,

IHC : tissu cardiaque humain,

IF : cellules A549, cellules U2OS

Informations générales

RAB11 has two isoform genes RAB11A(YL8) and RAB11B(YPT3), and belongs to the small GTPase superfamily and Rab family. It regulates endocytic recycling. RAB11 may exert its functions by interacting with multiple effector proteins in different complexes. It acts as a major regulator of membrane delivery during cytokinesis. RAB11 regulates the recycling of FCGR2 (receptor of Fc region of monomeric Ig G) to basolateral membranes. This antibody can recognize both RAB11A(24 kDa) and RAB11B(24 kDa).

Publications notables

Autrice	Pubmed ID	Journal	Application
Jiang Du	33178272	J Oncol	WB,IHC
Yu Lian	30326930	J Exp Clin Cancer Res	WB
Wai Wa Ray Chan	33047393	FASEB J	WB,IF

Stockage

Stockage:

Stocker à -20°C. Stable pendant un an après l'expédition.

Tampon de stockage:

PBS avec azoture de sodium à 0,02 % et glycérol à 50 % pH 7,3

L'aliquotage n'est pas nécessaire pour le stockage à -20C

*** Les 20ul contiennent 0,1% de BSA.

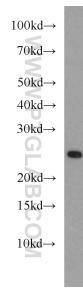
For technical support and original validation data for this product please contact:

T: 1 (888) 4PTGLAB (1-888-478-4522) (toll free in USA), or 1(312) 455-8498 (outside USA)

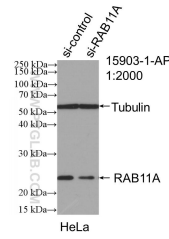
E: proteintech@ptglab.com
W: ptglab.com

This product is exclusively available under Proteintech Group brand and is not available to purchase from any other manufacturer.

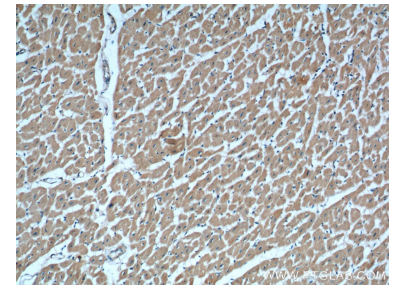
Données de validation sélectionnées



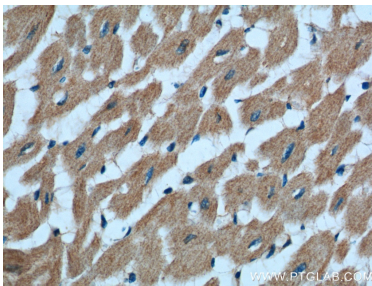
mouse spleen tissue were subjected to SDS PAGE followed by western blot with 15903-1-AP (RAB11A/B antibody) at dilution of 1:1000 incubated at room temperature for 1.5 hours.



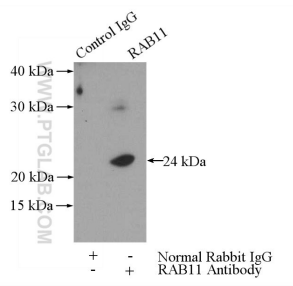
WB result of RAB11A/B antibody (15903-1-AP; 1:2000; incubated at room temperature for 1.5 hours) with sh-Control and sh-RAB11A/B transfected HeLa cells.



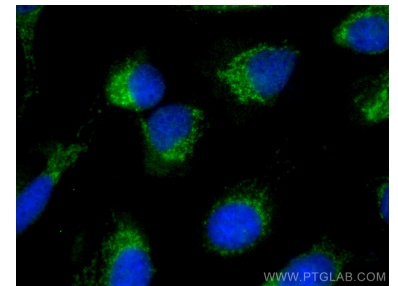
Immunohistochemical analysis of paraffin-embedded human heart tissue slide using 15903-1-AP (RAB11A/B antibody at dilution of 1:200 (under 10x lens).



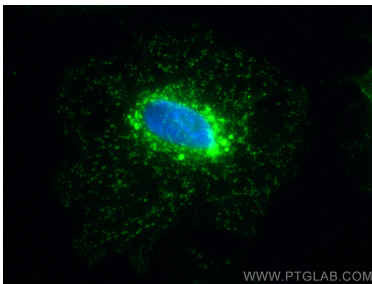
Immunohistochemical analysis of paraffin-embedded human heart tissue slide using 15903-1-AP (RAB11A/B antibody at dilution of 1:200 (under 40x lens).



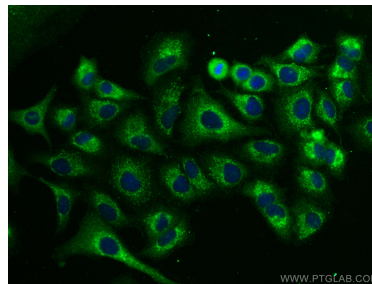
IP Result of anti-RAB11A/B (IP:15903-1-AP, 3ug; Detection:15903-1-AP 1:500) with mouse spleen tissue lysate 4000ug.



Immunofluorescent analysis of (-20°C Methanol) fixed U2OS cells using RAB11A/B antibody (15903-1-AP) at dilution of 1:400 and CoraLite®488-Conjugated AffiniPure Goat Anti-Rabbit IgG(H+L).



Immunofluorescent analysis of (-20°C Methanol) fixed A549 cells using RAB11A/B antibody (15903-1-AP) at dilution of 1:400 and CoraLite®488-Conjugated AffiniPure Goat Anti-Rabbit IgG(H+L).



Immunofluorescent analysis of (-20°C Methanol) fixed A549 cells using RAB11A/B antibody (15903-1-AP) at dilution of 1:400 and CoraLite®488-Conjugated AffiniPure Goat Anti-Rabbit IgG(H+L).