

À des fins de recherche uniquement

Anticorps Polyclonal de lapin anti-MDH1



Numéro de catalogue: 15904-1-AP

Phare

21 Publications

Informations de base

Numéro de catalogue:

15904-1-AP

Taille:

150ul, Concentration: 450 µg/ml by Nanodrop;

Hôte:

Lapin

Isotype:

IgG

Immunogen Catalog Number:

AG8744

Numéro d'acquisition GenBank:

BC001484

Identification du gène (NCBI):

4190

Nom complet:

malate dehydrogenase 1, NAD (soluble)

MW calculé

334 aa, 36 kDa

MW observés:

36 kDa

Méthode de purification:

Purification par affinité contre l'antigène

Dilutions recommandées:

WB 1:5000-1:50000

IP 0.5-4.0 µg for IP and 1:5000-1:50000 for WB

IHC 1:50-1:500

IF 1:10-1:100

Applications

Applications testées:

FC, IF, IHC, IP, WB, ELISA

Demandes citées:

IF, IHC, IP, WB

Spécificité de l'espèce:

Humain, rat, souris

Espèces citées:

Humain, rat, souris

Contrôles positifs:

WB : cellules HepG2, cellules HEK-293, cellules HL-60, tissu hépatique de rat, tissu hépatique de souris

IP : cellules HepG2,

IHC : tissu de carcinome à cellules rénales humain, tissu cardiaque de rat, tissu de cancer du foie humain, tissu rénal de souris

IF : cellules HepG2,

Remarque-IHC: il est suggéré de démasquer l'antigène avec un tampon de TE buffer pH 9,0; (*) À défaut, le démasquage de l'antigène peut être effectué avec un tampon citrate pH 6,0.

Informations générales

MDH1 (Malate dehydrogenase, cytoplasmic) is also named as MDHA and belongs to the LDH/MDH superfamily and MDH type 2 family which catalyzes the reversible oxidation of malate to oxaloacetate, utilizing the NAD/NADH cofactor system in the citric acid cycle. It can exist as a dimer and the dimeric MDH1 is the mitochondrial isoenzyme, whereas the tetrameric MDH2 is the glycosomal isoenzyme. (PMID:10693743)

Publications notables

Autrice	Pubmed ID	Journal	Application
Teresa W-M Fan	36150727	J Immunol	
Xiaoyu Ma	25301052	Nat Commun	WB
Jia-Yuan Zhang	34012073	Cell Res	WB

Stockage

Stockage:

Stocker à -20°C. Stable pendant un an après l'expédition.

Tampon de stockage:

PBS avec azoture de sodium à 0,02 % et glycérol à 50 % pH 7,3

L'aliquotage n'est pas nécessaire pour le stockage à -20C

*** Les 20ul contiennent 0,1% de BSA.

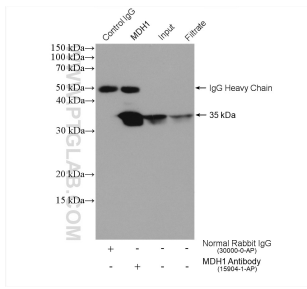
For technical support and original validation data for this product please contact:

T: 1 (888) 4PTGLAB (1-888-478-4522) (toll free in USA), or 1(312) 455-8498 (outside USA)

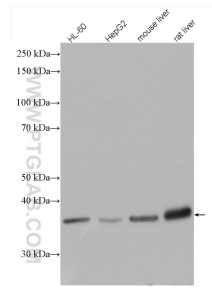
E: proteintech@ptglab.com
W: ptglab.com

This product is exclusively available under Proteintech Group brand and is not available to purchase from any other manufacturer.

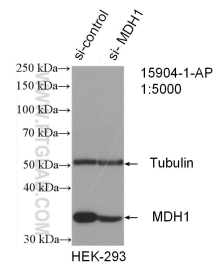
Données de validation sélectionnées



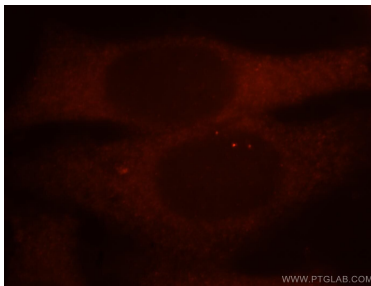
IP result of anti-MDH1 (IP:15904-1-AP, 4ug; Detection:15904-1-AP 1:10000) with HepG2 cells lysate 960 ug.



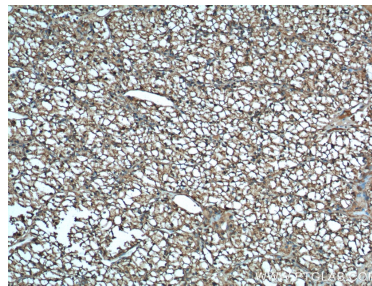
HepG2 cells were subjected to SDS PAGE followed by western blot with 15904-1-AP (MDH1 antibody) at dilution of 1:15000 incubated at room temperature for 1.5 hours.



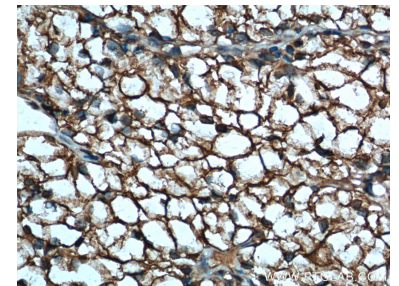
WB result of MDH1 antibody (15904-1-AP; 1:5000; incubated at room temperature for 1.5 hours) with sh-Control and sh-MDH1 transfected HEK-293 cells.



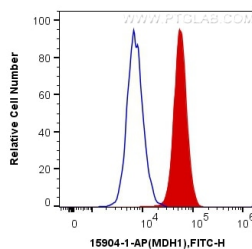
Immunofluorescent analysis of HepG2 cells, using MDH1 antibody 15904-1-AP at 1:25 dilution and Rhodamine-labeled goat anti-rabbit IgG (red).



Immunohistochemical analysis of paraffin-embedded human renal cell carcinoma tissue slide using 15904-1-AP (MDH1 Antibody) at dilution of 1:100 (under 10x lens). Heat mediated antigen retrieval with Tris-EDTA buffer (pH 9.0).



Immunohistochemical analysis of paraffin-embedded human renal cell carcinoma tissue slide using 15904-1-AP (MDH1 Antibody) at dilution of 1:100 (under 40x lens). Heat mediated antigen retrieval with Tris-EDTA buffer (pH 9.0).



1×10^6 HepG2 cells were intracellularly stained with 0.4 ug Anti-Human MDH1 (15904-1-AP) and CoraLite®488-Conjugated AffiniPure Goat Anti-Rabbit IgG(H+L) at dilution 1:1000 (red), or 0.4 ug x. Cells were fixed with 4% PFA and permeabilized with Flow Cytometry Perm Buffer (PF00011-C).