

À des fins de recherche uniquement

# Anticorps Polyclonal de lapin anti-IDH3A



Numéro de catalogue: 15909-1-AP

Phare

16 Publications

## Informations de base

Numéro de catalogue:

15909-1-AP

Taille:

150ul, Concentration: 600 µg/ml by Nanodrop and 333 µg/ml by Bradford method using BSA as the standard;

Hôte:

Lapin

Isotype:

IgG

Immunogen Catalog Number:

AG8662

Numéro d'acquisition GenBank:

BC021967

Identification du gène (NCBI):

3419

Nom complet:

isocitrate dehydrogenase 3 (NAD+)

alpha

MW calculé

366 aa, 40 kDa

MW observés:

40 kDa

Méthode de purification:

Purification par affinité contre l'antigène

Dilutions recommandées:

WB 1:500-1:2400

IP 0.5-4.0 ug for IP and 1:500-1:2000 for WB

IHC 1:20-1:200

IF 1:20-1:200

## Applications

Applications testées:

FC, IF, IHC, IP, WB, ELISA

Demandes citées:

IF, IHC, IP, WB

Spécificité de l'espèce:

Humain, rat, souris

Espèces citées:

Humain, rat, souris

**Remarque-IHC: il est suggéré de démasquer l'antigène avec un tampon de TE buffer pH 9,0; (\*) A défaut, le démasquage de l'antigène peut être effectué avec un tampon citrate pH 6,0.**

Contrôles positifs:

WB : tissu de muscle squelettique humain, cellules HepG2, tissu cérébral de souris

IP : cellules HepG2,

IHC : tissu cérébral humain,

IF : cellules HepG2,

## Informations générales

### Publications notables

Autrice	Pubmed ID	Journal	Application
Yingjiang Xu	34704268	EMBO J	WB
Teiji Oda	26437904	Circ J	WB
Péter Gulyássy	33211194	Amino Acids	WB

## Stockage

Stockage:

Stocker à -20°C. Stable pendant un an après l'expédition.

Tampon de stockage:

PBS avec azoture de sodium à 0,02 % et glycérol à 50 % pH 7,3

L'aliquotage n'est pas nécessaire pour le stockage à -20C

\*\*\* Les 20ul contiennent 0,1% de BSA.

For technical support and original validation data for this product please contact:

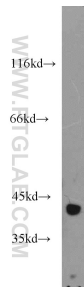
T: 1 (888) 4PTGLAB (1-888-478-4522) (toll free in USA), or 1(312) 455-8498 (outside USA)

E: proteintech@ptglab.com

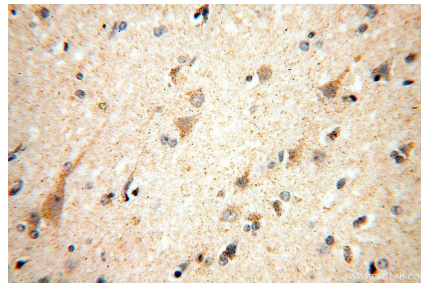
W: ptglab.com

This product is exclusively available under Proteintech Group brand and is not available to purchase from any other manufacturer.

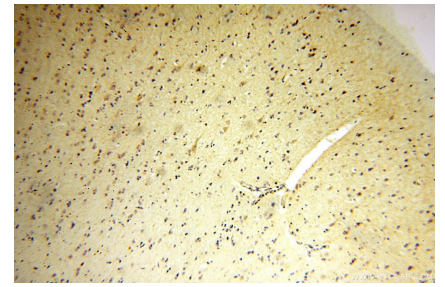
## Données de validation sélectionnées



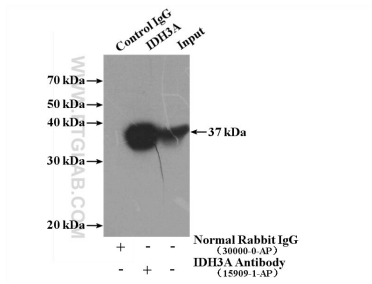
human skeletal muscle tissue were subjected to SDS PAGE followed by western blot with 15909-1-AP (IDH3A antibody) at dilution of 1:1200 incubated at room temperature for 1.5 hours.



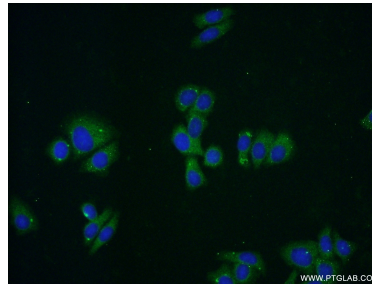
Immunohistochemical analysis of paraffin-embedded human brain using 15909-1-AP (IDH3A antibody) at dilution of 1:100 (under 40x lens).



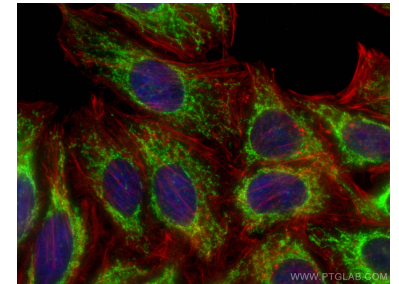
Immunohistochemical analysis of paraffin-embedded human brain using 15909-1-AP (IDH3A antibody) at dilution of 1:100 (under 10x lens).



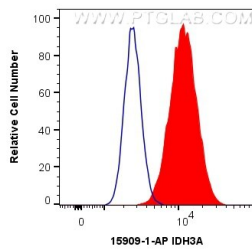
IP Result of anti-IDH3A (IP:15909-1-AP, 4ug; Detection:15909-1-AP 1:1000) with HepG2 cells lysate 2400ug.



Immunofluorescent analysis of HepG2 cells using 15909-1-AP (IDH3A antibody) at dilution of 1:50 and Alexa Fluor 488-conjugated AffiniPure Goat Anti-Rabbit IgG(H+L).



Immunofluorescent analysis of (-20°C Ethanol) fixed HepG2 cells using IDH3A antibody (15909-1-AP) at dilution of 1:400 and CoraLite®488-Conjugated AffiniPure Goat Anti-Rabbit IgG(H+L), CL594-phalloidin (red).



1X10<sup>6</sup> HepG2 cells were intracellularly stained with 0.4 ug Anti-Human IDH3A (15909-1-AP) and CoraLite®488-Conjugated AffiniPure Goat Anti-Rabbit IgG(H+L) at dilution 1:1000 (red), or 0.4 ug Control Antibody. Cells were fixed with 4% PFA and permeabilized with Flow Cytometry Perm Buffer (PF00011-C).