

À des fins de recherche uniquement

Anticorps Polyclonal de lapin anti-ALDH1A1



Numéro de catalogue: 15910-1-AP

109 Publications

Informations de base

Numéro de catalogue: 15910-1-AP	Numéro d'acquisition GenBank: BC001505	Méthode de purification: Purification par affinité contre l'antigène
Taille: 150ul , Concentration: 450 µg/ml by Nanodrop;	Identification du gène (NCBI): 216	Dilutions recommandées: WB 1:1000-1:4000 IP 0.5-4.0 ug for IP and 1:5000-1:50000 for WB IHC 1:50-1:500 IF 1:50-1:500
Hôte: Lapin	Nom complet: aldehyde dehydrogenase 1 family, member A1	
Isotype: IgG	MW calculé 501 aa, 55 kDa	
Immunogen Catalog Number: AG8665	MW observés: 50-55 kDa	

Applications

Applications testées:
FC, IF, IHC, IP, WB, ELISA

Demandes citées:
ELISA, IF, IHC, WB

Spécificité de l'espèce:
Humain, rat, souris

Espèces citées:
bovin, Humain, rat, souris

Remarque-IHC: il est suggéré de démasquer l'antigène avec un tampon de TE buffer pH 9,0; (*) À défaut, 'le démasquage de l'antigène peut être 'effectué avec un tampon citrate pH 6,0.

Contrôles positifs:

WB : cellules K-562, tissu cérébral de souris, tissu hépatique de rat, tissu hépatique de souris, tissu rénal de souris

IP : tissu hépatique de souris,

IHC : tissu testiculaire de souris, tissu hépatique humain

IF : tissu de cõlon de souris, cellules HepG2, tissu testiculaire de souris

Informations générales

ALDH1A1 (Aldehyde dehydrogenase family 1 member A1), also named as ALDC, ALDH1 and PUMB1, belongs to the aldehyde dehydrogenase family. The ALDH1A1 gene encodes a liver cytosolic isoform of acetaldehyde dehydrogenase, an enzyme involved in the major pathway of alcohol metabolism after alcohol dehydrogenase. ALDH1A1 plays a critical role in protection against oxidative stress-induced cytotoxicity in lens epithelial cells (PMID:19296407). And it is important for multiple biological activities including drug resistance, cell differentiation, and oxidative stress response (PMID:19025616). As a novel cancer stem cell marker, ALDH1A1 can be used for tumors whose corresponding normal tissues express ALDH1 in relatively restricted or limited levels such as breast, lung, ovarian or colon cancer (PMID: 20422001). This antibody can also recognize some other membranes of the aldehyde dehydrogenase family.

Publications notables

Autrice	Pubmed ID	Journal	Application
Lei Liu	30273566	Chem Biol Interact	WB
XIAOYUE FENG	34528694	Oncol Rep	WB
Maria Laura Tognoli	34532864	EMBO J	IF

Stockage

Stockage:

Stocker à -20°C. Stable pendant un an après l'expédition.

Tampon de stockage:

PBS avec azoture de sodium à 0,02 % et glycérol à 50 % pH 7,3

L'aliquotage n'est pas nécessaire pour le stockage à -20C

*** Les 20ul contiennent 0,1% de BSA.

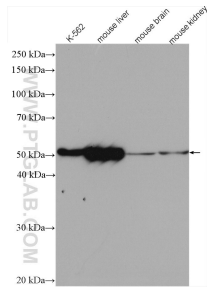
For technical support and original validation data for this product please contact:

T: 1 (888) 4PTGLAB (1-888-478-4522) (toll free in USA), or 1(312) 455-8498 (outside USA)

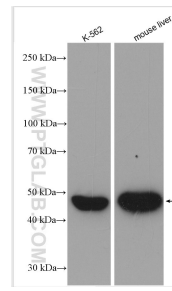
E: proteintech@ptglab.com
W: ptglab.com

This product is exclusively available under Proteintech Group brand and is not available to purchase from any other manufacturer.

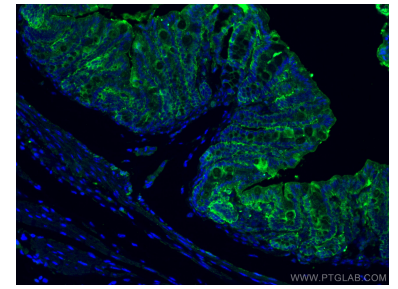
Données de validation sélectionnées



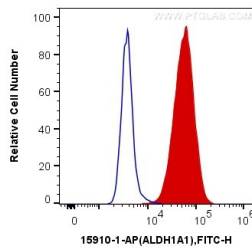
Various lysates were subjected to SDS PAGE followed by western blot with 15910-1-AP (ALDH1A1 antibody) at dilution of 1:2000 incubated at room temperature for 1.5 hours.



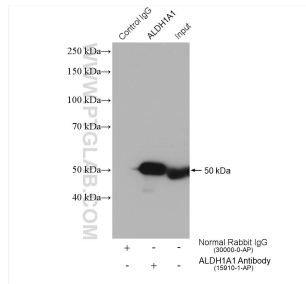
Various lysates were subjected to SDS PAGE followed by western blot with 15910-1-AP (ALDH1A1 antibody) at dilution of 1:8000 incubated at room temperature for 1.5 hours.



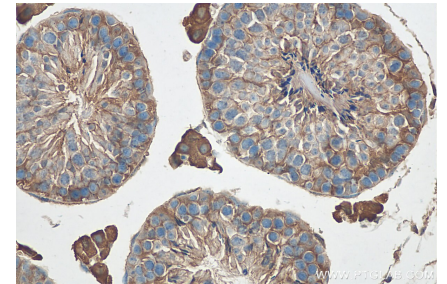
Immunofluorescent analysis of (4% PFA) fixed mouse colon tissue using 15910-1-AP (ALDH1A1 antibody), at dilution of 1:100 and CoraLite® 488-Conjugated AffiniPure Goat Anti-Rabbit IgG(H+L).



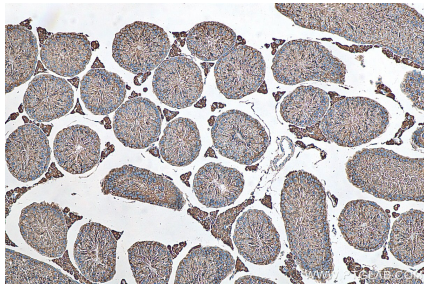
1X10⁶ HepG2 cells were intracellularly stained with 0.2 ug Anti-Human ALDH1A1 (15910-1-AP) and CoraLite®488-Conjugated AffiniPure Goat Anti-Rabbit IgG(H+L) at dilution 1:1000 (red), or 0.2 ug Control Antibody. Cells were fixed with 4% PFA and permeabilized with Flow Cytometry Perm Buffer (PF00011-C).



IP result of anti-ALDH1A1(IP:15910-1-AP, 4ug; Detection:15910-1-AP 1:10000) with mouse liver tissue lysate 3040 ug.



Immunohistochemical analysis of paraffin-embedded mouse testis tissue slide using 15910-1-AP (ALDH1A1 antibody) at dilution of 1:200 (under 40x lens). Heat mediated antigen retrieval with Tris-EDTA buffer (pH 9.0).



Immunohistochemical analysis of paraffin-embedded mouse testis tissue slide using 15910-1-AP (ALDH1A1 antibody) at dilution of 1:200 (under 10x lens). Heat mediated antigen retrieval with Tris-EDTA buffer (pH 9.0).