

À des fins de recherche uniquement

# Anticorps Polyclonal de lapin anti-CTP synthase



Numéro de catalogue: 15914-1-AP

Phare

21 Publications

## Informations de base

Numéro de catalogue:

15914-1-AP

Taille:

150ul, Concentration: 600 µg/ml by Nanodrop and 267 µg/ml by Bradford method using BSA as the standard;

Hôte:

Lapin

Isotype:

IgG

Immunogen Catalog Number:

AG8707

Numéro d'acquisition GenBank:

BC009408

Identification du gène (NCBI):

1503

Nom complet:

CTP synthase

MW calculé

591 aa, 67 kDa

MW observés:

67 kDa

Méthode de purification:

Purification par affinité contre l'antigène

Dilutions recommandées:

WB 1:1000-1:6000

IP 0.5-4.0 ug for IP and 1:500-1:1000 for WB

IHC 1:50-1:500

IF 1:10-1:100

## Applications

Applications testées:

FC, IF, IHC, IP, WB, ELISA

Demandes citées:

CoIP, IF, IHC, WB

Spécificité de l'espèce:

Humain

Espèces citées:

Humain, Moustique, poisson-zèbre, souris

**Remarque-IHC: il est suggéré de démasquer l'antigène avec un tampon de TE buffer pH 9,0; (\*) À défaut, 'le démasquage de l'antigène peut être effectué avec un tampon citrate pH 6,0.**

Contrôles positifs:

WB : cellules HEK-293, cellules HeLa, cellules HepG2, cellules Raji

IP : cellules HeLa,

IHC : tissu de cancer du foie humain,

IF : cellules HepG2,

## Informations générales

CTP synthase (CTPS) is also named as CTPS1 and belongs to the CTP synthase family. It catalyses the ATP-dependent formation of CTP from UTP using either L-glutamine or NH<sub>3</sub> as the nitrogen source (PMID:12752439). It is important in the biosynthesis of phospholipids and nucleic acids, and plays a key role in cell growth, development, and tumorigenesis (PMID:8813694). CTP synthetase exists as a dimer in the absence of its substrates ATP and UTP, but in the presence of saturating concentrations of these substrates the enzyme exists as a tetramer. (PMID:18439916)

## Publications notables

Autrice	Pubmed ID	Journal	Application
Chia-Chun Chang	29097181	Exp Cell Res	IF
Yi-Fan Fang	36233000	Int J Mol Sci	IF
Otávio Cabral-Marques	31849949	Front Immunol	

## Stockage

Stockage:

Stocker à -20°C. Stable pendant un an après l'expédition.

Tampon de stockage:

PBS avec azoture de sodium à 0,02 % et glycérol à 50 % pH 7,3

L'aliquotage n'est pas nécessaire pour le stockage à -20C

\*\*\* Les 20ul contiennent 0,1% de BSA.

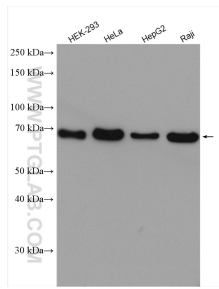
For technical support and original validation data for this product please contact:

T: 1 (888) 4PTGLAB (1-888-478-4522) (toll free in USA), or 1(312) 455-8498 (outside USA)

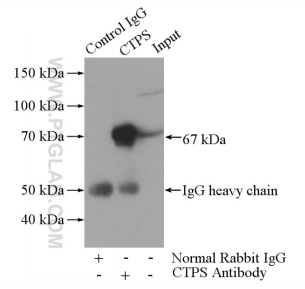
E: proteintech@ptglab.com  
W: ptglab.com

This product is exclusively available under Proteintech Group brand and is not available to purchase from any other manufacturer.

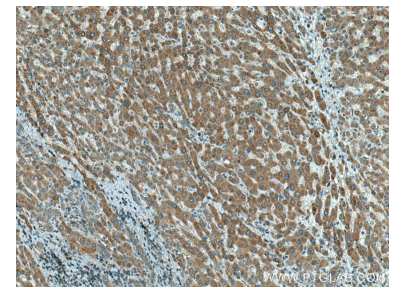
## Données de validation sélectionnées



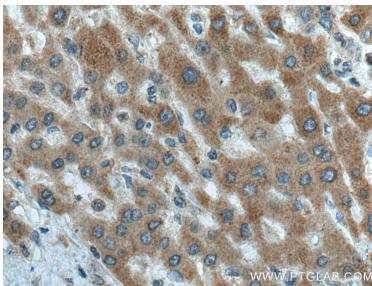
Various lysates were subjected to SDS PAGE followed by western blot with 15914-1-AP (CTP synthase antibody) at dilution of 1:3000 incubated at room temperature for 1.5 hours.



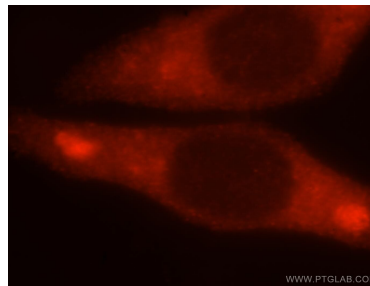
IP Result of anti-CTP synthase (IP:15914-1-AP, 4ug; Detection:15914-1-AP 1:500) with HeLa cells lysate 1200ug.



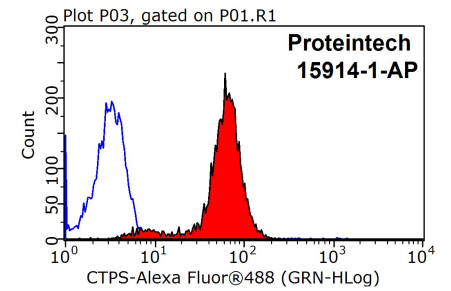
Immunohistochemical analysis of paraffin-embedded human liver cancer tissue slide using 15914-1-AP (CTP synthase antibody) at dilution of 1:200 (under 10x lens). Heat mediated antigen retrieval with Tris-EDTA buffer (pH 9.0).



Immunohistochemical analysis of paraffin-embedded human liver cancer tissue slide using 15914-1-AP (CTP synthase antibody) at dilution of 1:200 (under 40x lens). Heat mediated antigen retrieval with Tris-EDTA buffer (pH 9.0).



Immunofluorescent analysis of HepG2 cells, using CTPS antibody 15914-1-AP at 1:25 dilution and Rhodamine-labeled goat anti-rabbit IgG (red).



1X10<sup>6</sup> HepG2 cells were stained with 0.2ug CTP synthase antibody (15914-1-AP, red) and control antibody (blue). Fixed with 90% MeOH blocked with 3% BSA (30 min). Alexa Fluor 488-conjugated AffiniPure Goat Anti-Rabbit IgG(H+L) with dilution 1:1500.