

À des fins de recherche uniquement

Anticorps Polyclonal de lapin anti-TBCC



Numéro de catalogue: 15917-1-AP

1 Publications

Informations de base

Numéro de catalogue:

15917-1-AP

Taille:

150ul, Concentration: 500 µg/ml by Nanodrop and 267 µg/ml by Bradford method using BSA as the standard;

Hôte:

Lapin

Isotype:

IgG

Immunogen Catalog Number:

AG8719

Numéro d'acquisition GenBank:

BC020170

Identification du gène (NCBI):

6903

Nom complet:

tubulin folding cofactor C

MW calculé

346 aa, 39 kDa

MW observés:

39 kDa

Méthode de purification:

Purification par affinité contre l'antigène

Dilutions recommandées:

WB 1:1000-1:4000

IF 1:10-1:100

Applications

Applications testées:

FC, IF, WB, ELISA

Demandes citées:

IF

Spécificité de l'espèce:

Humain, rat, souris

Espèces citées:

souris

Contrôles positifs:

WB : cellules HepG2, cellules HeLa, cellules K-562, cellules MCF-7, tissu cérébral humain, tissu hépatique de rat

IF : cellules HepG2,

Informations générales

TBCC, also named CFC. Expressed in the retina. Expressed in the rod and cone photoreceptors, extending from the inner segments (IS), through the outer nuclear layer (ONL) and into the synapses in the outer plexiform layer (OPL). Strongly expressed to the photoreceptor connecting cilium at the tips of the IS (at protein level). Cofactor C was cytoplasmic in distribution (PMID: 12417528).

Publications notables

Autrice	Pubmed ID	Journal	Application
Lukas Juergens	32712744	Histochem Cell Biol	IF

Stockage

Stockage:

Stocker à -20°C. Stable pendant un an après l'expédition.

Tampon de stockage:

PBS avec azote de sodium à 0,02 % et glycérol à 50 % pH 7,3

L'aliquotage n'est pas nécessaire pour le stockage à -20C

*** Les 20ul contiennent 0,1% de BSA.

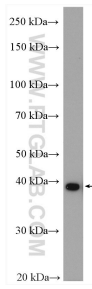
For technical support and original validation data for this product please contact:

T: 1 (888) 4PTGLAB (1-888-478-4522) (toll free in USA), or 1(312) 455-8498 (outside USA)

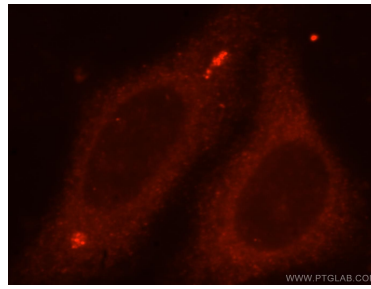
E: proteintech@ptglab.com
W: ptglab.com

This product is exclusively available under Proteintech Group brand and is not available to purchase from any other manufacturer.

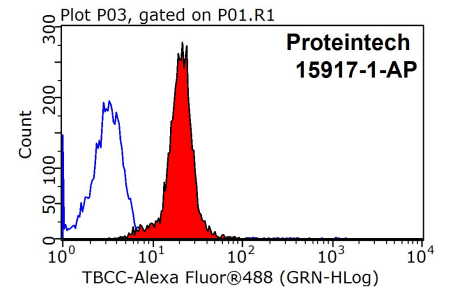
Données de validation sélectionnées



HepG2 cells were subjected to SDS PAGE followed by western blot with 15917-1-AP (TBCC antibody) at dilution of 1:2000 incubated at room temperature for 1.5 hours.



Immunofluorescent analysis of HepG2 cells, using TBCC antibody 15917-1-AP at 1:25 dilution and Rhodamine-labeled goat anti-rabbit IgG (red).



1X10⁶ HepG2 cells were stained with 0.2ug TBCC antibody (15917-1-AP, red) and control antibody (blue). Fixed with 90% MeOH blocked with 3% BSA (30 min). Alexa Fluor 488-conjugated AffiniPure Goat Anti-Rabbit IgG(H+L) with dilution 1:1500.