

À des fins de recherche uniquement

Anticorps Polyclonal de lapin anti-POLR1C



Numéro de catalogue: 15923-1-AP

1 Publications

Informations de base

Numéro de catalogue:

15923-1-AP

Taille:

150ul, Concentration: 133 µg/ml by Nanodrop and 133 µg/ml by Bradford method using BSA as the standard;

Hôte:

Lapin

Isotype:

IgG

Immunogen Catalog Number:

AG8746

Numéro d'acquisition GenBank:

BC008863

Identification du gène (NCBI):

9533

Nom complet:

polymerase (RNA) I polypeptide C, 30kDa

MW calculé

346 aa, 39 kDa

MW observés:

39 kDa

Méthode de purification:

Purification par affinité contre l'antigène

Dilutions recommandées:

WB 1:500-1:2000

IP 0.5-4.0 ug for IP and 1:500-1:1000 for WB

IHC 1:20-1:200

Applications

Applications testées:

IHC, IP, WB, ELISA

Spécificité de l'espèce:

Humain, souris

Espèces citées:

souris

Remarque-IHC: il est suggéré de démasquer l'antigène avec un tampon de TE buffer pH 9.0; (*) À défaut, 'le démasquage de l'antigène peut être effectué avec un tampon citrate pH 6,0.

Contrôles positifs:

WB : cellules BxPC-3, cellules Caco-2, cellules HEK-293, cellules HeLa, cellules HepG2

IP : cellules NIH/3T3,

IHC : tissu ovarien humain, tissu cutané humain, tissu hépatique de souris, tissu hépatique humain, tissu placentaire humain, tissu rénal humain, tissu splénique humain, tissu testiculaire humain

Informations générales

POLR1C is a DNA-dependent RNA polymerase which catalyzes the transcription of DNA into RNA using the four ribonucleoside triphosphates as substrates. It is a common component of RNA polymerases I and III which synthesize ribosomal RNA precursors and small RNAs, such as 5S rRNA and tRNAs, respectively. RPAC 1 is part of the Pol core element with the central large cleft and probably a clamp element that moves to open and close the cleft (By similarity).

Publications notables

| Autrice | Pubmed ID | Journal | Application |
|----------------|-----------|-------------|-------------|
| Yongpeng Jiang | 36443871 | Genome Biol | |

Stockage

Stockage:

Stocker à -20°C. Stable pendant un an après l'expédition.

Tampon de stockage:

PBS avec azoture de sodium à 0,02 % et glycérol à 50 % pH 7,3

L'aliquotage n'est pas nécessaire pour le stockage à -20C

*** Les 20ul contiennent 0,1% de BSA.

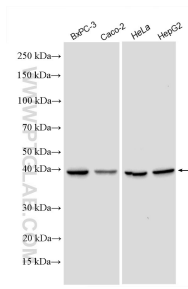
For technical support and original validation data for this product please contact:

T: 1 (888) 4PTGLAB (1-888-478-4522) (toll free in USA), or 1(312) 455-8498 (outside USA)

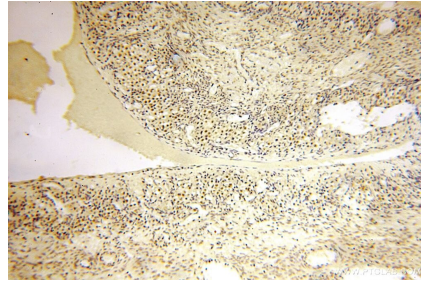
E: proteintech@ptglab.com
W: ptglab.com

This product is exclusively available under Proteintech Group brand and is not available to purchase from any other manufacturer.

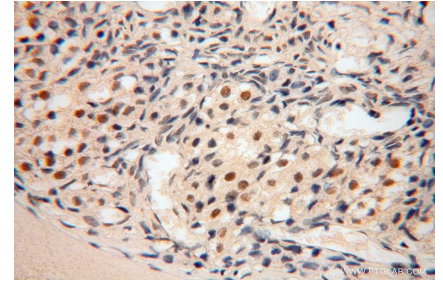
Données de validation sélectionnées



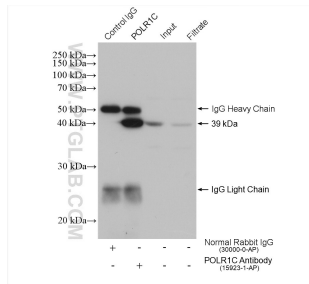
Various lysates were subjected to SDS PAGE followed by western blot with 15923-1-AP (POLR1C antibody) at dilution of 1:1000 incubated at room temperature for 1.5 hours.



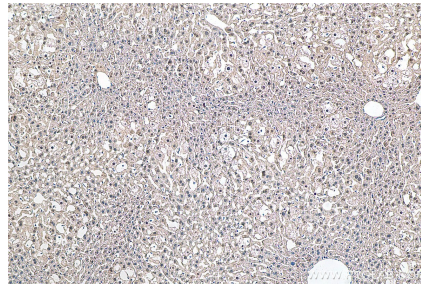
Immunohistochemical analysis of paraffin-embedded human ovary using 15923-1-AP (POLR1C antibody) at dilution of 1:200 (under 10x lens).



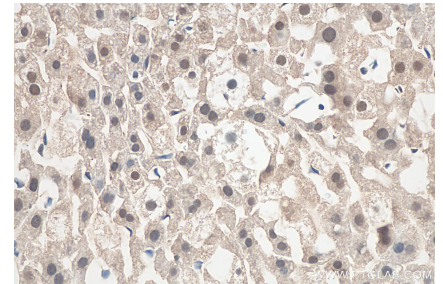
Immunohistochemical analysis of paraffin-embedded human ovary using 15923-1-AP (POLR1C antibody) at dilution of 1:200 (under 40x lens).



IP result of anti-POLR1C (IP: 15923-1-AP, 4ug; Detection: 15923-1-AP 1:800) with NIH/3T3 cells lysate 1600 ug.



Immunohistochemical analysis of paraffin-embedded mouse liver tissue slide using 15923-1-AP (POLR1C antibody) at dilution of 1:800 (under 10x lens). Heat mediated antigen retrieval with Tris-EDTA buffer (pH 9.0).



Immunohistochemical analysis of paraffin-embedded mouse liver tissue slide using 15923-1-AP (POLR1C antibody) at dilution of 1:800 (under 40x lens). Heat mediated antigen retrieval with Tris-EDTA buffer (pH 9.0).