

À des fins de recherche uniquement

Anticorps Polyclonal de lapin anti-RHEB



Numéro de catalogue: 15924-1-AP

Phare

11 Publications

Informations de base

Numéro de catalogue:

15924-1-AP

Taille:

150ul, Concentration: 500 µg/ml by Nanodrop and 333 µg/ml by Bradford method using BSA as the standard;

Hôte:

Lapin

Isotype:

IgG

Immunogen Catalog Number:

AG8747

Numéro d'acquisition GenBank:

BC016155

Identification du gène (NCBI):

6009

Nom complet:

Ras homolog enriched in brain

MW calculé

184 aa, 20 kDa

MW observés:

20 kDa

Méthode de purification:

Purification par affinité contre l'antigène

Dilutions recommandées:

WB 1:500-1:1000

IHC 1:50-1:500

IF 1:50-1:500

Applications

Applications testées:

IF, IHC, WB, ELISA

Demandes citées:

IF, IHC, WB

Spécificité de l'espèce:

Humain, souris

Espèces citées:

Humain, rat, souris

Remarque-IHC: il est suggéré de démasquer l'antigène avec un tampon de TE buffer pH 9,0; (*) A défaut, 'le démasquage de l'antigène peut être 'effectué avec un tampon citrate pH 6,0.

Contrôles positifs:

WB : tissu cérébral humain fœtal, cellules 3T3-L1, cellules DU 145, cellules HeLa, tissu cérébral humain

IHC : tissu cérébral humain, tissu cérébral de souris

IF : tissu de cancer du pancréas humain, cellules HeLa

Informations générales

Rheb is a member of the Ras superfamily small GTPases that plays important roles in the regulation of protein synthesis and growth in response to nutrient and growth factors. It is well known to bind and activate mTOR, a serine/threonine kinase which augments protein synthesis. Rheb has GTPase activity and shuttles between a GDP-bound form and a GTP-bound form, and farnesylation of the protein is required for this activity.

Publications notables

Autrice	Pubmed ID	Journal	Application
Min Zheng	26622727	Oncol Lett	WB,IHC
Meng Chen	34635641	Cell Death Discov	WB
Jinlin Lv	29017169	Cell Physiol Biochem	WB

Stockage

Stockage:

Stocker à -20°C. Stable pendant un an après l'expédition.

Tampon de stockage:

PBS avec azoture de sodium à 0,02 % et glycérol à 50 % pH 7,3

L'aliquotage n'est pas nécessaire pour le stockage à -20C

*** Les 20ul contiennent 0,1% de BSA.

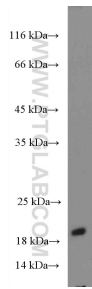
For technical support and original validation data for this product please contact:

T: 1 (888) 4PTGLAB (1-888-478-4522) (toll free in USA), or 1(312) 455-8498 (outside USA)

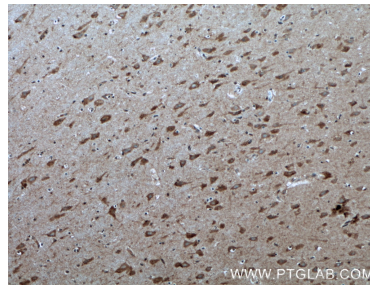
E: proteintech@ptglab.com
W: ptglab.com

This product is exclusively available under Proteintech Group brand and is not available to purchase from any other manufacturer.

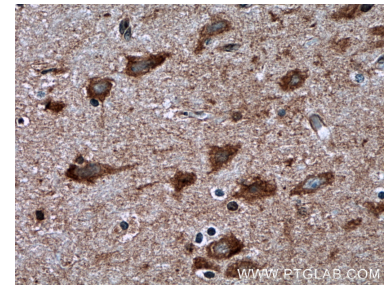
Données de validation sélectionnées



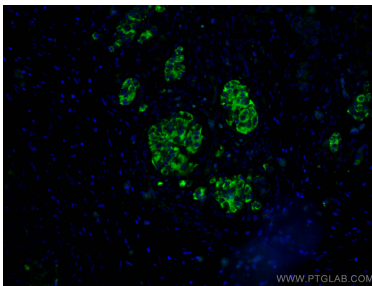
fetal human brain tissue were subjected to SDS PAGE followed by western blot with 15924-1-AP (RHEB Antibody) at dilution of 1:600 incubated at room temperature for 1.5 hours.



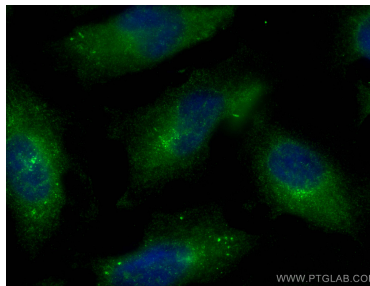
Immunohistochemical analysis of paraffin-embedded human brain tissue slide using 15924-1-AP (RHEB antibody) at dilution of 1:200 (under 10x lens). Heat mediated antigen retrieval with Tris-EDTA buffer (pH 9.0).



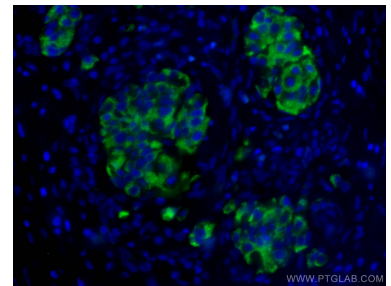
Immunohistochemical analysis of paraffin-embedded human brain tissue slide using 15924-1-AP (RHEB antibody) at dilution of 1:200 (under 40x lens). Heat mediated antigen retrieval with Tris-EDTA buffer (pH 9.0).



Immunofluorescent analysis of (4% PFA) fixed human pancreas cancer tissue using RHEB antibody (15924-1-AP) at dilution of 1:200 and CoraLite@488-Conjugated AffiniPure Goat Anti-Rabbit IgG(H+L).



Immunofluorescent analysis of (-20°C Methanol) fixed HeLa cells using RHEB antibody (15924-1-AP) at dilution of 1:100 and CoraLite@488-Conjugated AffiniPure Goat Anti-Rabbit IgG(H+L).



Immunofluorescent analysis of (4% PFA) fixed human pancreas cancer tissue using RHEB antibody (15924-1-AP) at dilution of 1:200 and CoraLite@488-Conjugated AffiniPure Goat Anti-Rabbit IgG(H+L).