

À des fins de recherche uniquement

# Anticorps Polyclonal de lapin anti-IDH2



Numéro de catalogue: 15932-1-AP

Phare

38 Publications

## Informations de base

Numéro de catalogue:

15932-1-AP

Taille:

150ul, Concentration: 200 µg/ml by Bradford method using BSA as the standard;

Hôte:

Lapin

Isotype:

IgG

Immunogen Catalog Number:

AG8779

Numéro d'acquisition GenBank:

BC009244

Identification du gène (NCBI):

3418

Nom complet:

isocitrate dehydrogenase 2 (NADP+), mitochondrial

MW calculé

452 aa, 51 kDa

MW observés:

41-47 kDa

Méthode de purification:

Purification par affinité contre l'antigène

Dilutions recommandées:

WB 1:500-1:3000

IP 0.5-4.0 µg for IP and 1:500-1:2000 for WB

IHC 1:200-1:800

## Applications

Applications testées:

IHC, IP, WB, ELISA

Demandes citées:

IF, IHC, IP, WB

Spécificité de l'espèce:

Humain, rat, souris

Espèces citées:

Humain, poulet, souris

**Remarque-IHC: il est suggéré de démasquer l'antigène avec un tampon de TE buffer pH 9.0; (\*) A défaut, 'le démasquage de l'antigène peut être effectué avec un tampon citrate pH 6,0.**

Contrôles positifs:

WB : cellules HEK-293, cellules HeLa, cellules HepG2, cellules Jurkat, cellules K-562, cellules NIH/3T3, cellules SH-SY5Y, tissu cardiaque de souris, tissu cérébral de souris, tissu de muscle squelettique de souris, tissu hépatique de rat, tissu hépatique de souris

IP : tissu cérébral de souris,

IHC : tissu de cancer du côlon humain, tissu rénal de souris

## Informations générales

IDH2, also named as IDP and ICD-M, belongs to the isocitrate and isopropylmalate dehydrogenases family. It plays a role in intermediary metabolism and energy production. IDH2 is a mitochondrial NADP-dependent isocitrate dehydrogenase that catalyzes oxidative decarboxylation of isocitrate to alpha-ketoglutarate, producing NADPH. It may tightly associate or interact with the pyruvate dehydrogenase complex. IDH1 and IDH2 mutations could also contribute to tumorigenesis and cancer progression through increased mutagenesis. IDH2 has 2 isoforms with the MW of 51 kDa and 45 kDa, and the mature form is about 47 kDa and 41 kDa with the N-terminal transit peptide cleaved.

## Publications notables

Autrice	Pubmed ID	Journal	Application
Teresa W-M Fan	36150727	J Immunol	
He Wen	25251602	J Neurochem	WB, IF
Lifang Li	36230229	Animals (Basel)	WB

## Stockage

Stockage:

Stocker à -20°C. Stable pendant un an après l'expédition.

Tampon de stockage:

PBS avec azoture de sodium à 0,02 % et glycérol à 50 % pH 7,3

L'aliquotage n'est pas nécessaire pour le stockage à -20C

\*\*\* Les 20ul contiennent 0,1% de BSA.

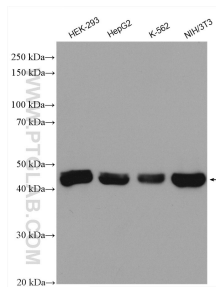
For technical support and original validation data for this product please contact:

T: 1 (888) 4PTGLAB (1-888-478-4522) (toll free in USA), or 1(312) 455-8498 (outside USA)

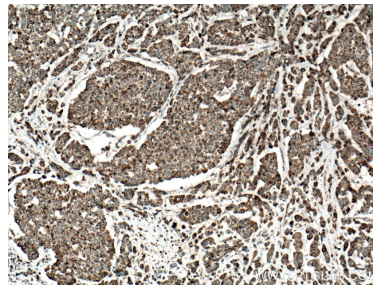
E: proteintech@ptglab.com  
W: ptglab.com

This product is exclusively available under Proteintech Group brand and is not available to purchase from any other manufacturer.

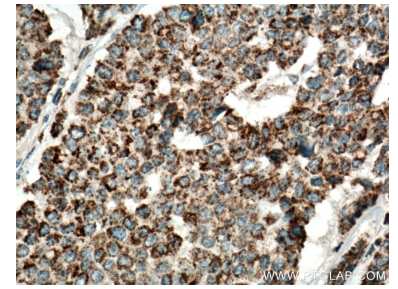
## Données de validation sélectionnées



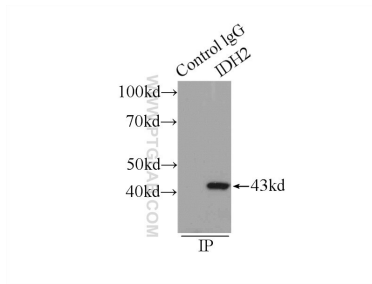
Various lysates were subjected to SDS PAGE followed by western blot with 15932-1-AP (IDH2 antibody) at dilution of 1:1500 incubated at room temperature for 1.5 hours.



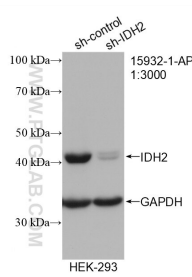
Immunohistochemical analysis of paraffin-embedded human colon cancer tissue slide using 15932-1-AP (IDH2 antibody) at dilution of 1:400 (under 10x lens. Heat mediated antigen retrieval with Tris-EDTA buffer (pH 9.0)).



Immunohistochemical analysis of paraffin-embedded human colon cancer tissue slide using 15932-1-AP (IDH2 antibody) at dilution of 1:400 (under 40x lens. Heat mediated antigen retrieval with Tris-EDTA buffer (pH 9.0)).



IP Result of anti-IDH2 (IP:15932-1-AP, 3ug; Detection:15932-1-AP 1:1000) with mouse brain tissue lysate 6000ug.



WB result of IDH2 antibody (15932-1-AP; 1:3000; incubated at room temperature for 1.5 hours) with sh-Control and sh-IDH2 transfected HEK-293 cells.