

À des fins de recherche uniquement

Anticorps Polyclonal de lapin anti-TIPE2



Numéro de catalogue: 15940-1-AP

Phare

34 Publications

Informations de base

Numéro de catalogue:

15940-1-AP

Taille:

150ul, Concentration: 400 µg/ml by Nanodrop and 187 µg/ml by Bradford method using BSA as the standard;

Hôte:

Lapin

Isotype:

IgG

Immunogen Catalog Number:

AG7964

Numéro d'acquisition GenBank:

BC063014

Identification du gène (NCBI):

79626

Nom complet:

tumor necrosis factor, alpha-induced protein 8-like 2

MW calculé

184 aa, 21 kDa

MW observés:

18-20 kDa

Méthode de purification:

Purification par affinité contre l'antigène

Dilutions recommandées:

WB 1:1000-1:6000

IP 0.5-4.0 ug for IP and 1:500-1:1000 for WB

IHC 1:50-1:500

IF 1:50-1:500

Applications

Applications testées:

FC, IF, IHC, IP, WB, ELISA

Demandes citées:

IF, IHC, IP, WB

Spécificité de l'espèce:

Humain, rat, souris

Espèces citées:

Humain, rat, souris

Remarque-IHC: il est suggéré de démasquer l'antigène avec un tampon de TE buffer pH 9,0; (*) À défaut, 'le démasquage de l'antigène peut être 'effectué avec un tampon citrate pH 6,0.

Contrôles positifs:

WB : cellules THP-1, cellules RAW 264.7, tissu de cerveau de souris, tissu d'intestin grêle de souris, tissu lymphatique de rat, tissu splénique de rat, tissu splénique de souris

IP : tissu de cerveau de souris,

IHC : tissu de lymphome humain, tissu de tumeur ovarienne humaine, tissu splénique de souris

IF : cellules RAW 264.7, cellules HepG2

Informations générales

TIPE2 (TNF- α -inducible protein 8-like 2, or TNFAIP8L2), a negative immune regulator, is essential for maintaining immune homeostasis. TIPE2 shares considerable sequence homology with members of the tumor necrosis factor- α -inducible protein 8 (TNFAIP8) family, which are thought to regulate cellular and immune homeostasis. TIPE2 acts as a negative regulator of Toll-like receptor and T-cell receptor function and is preferentially expressed in lymphoid tissues. TIPE2 plays an essential role for a signal transduction pathway that links inflammatory immune response to specific conditions after cerebral ischemia

Publications notables

Autrice	Pubmed ID	Journal	Application
Jiacheng Bi	34524845	Sci Adv	WB
Michitaka Oho	27601471	J Biol Chem	WB,IF
Svetlana A Fayngerts	29058702	Nat Immunol	WB,IF,IP

Stockage

Stockage:

Stocker à -20°C. Stable pendant un an après l'expédition.

Tampon de stockage:

PBS avec azoture de sodium à 0,02 % et glycérol à 50 % pH 7,3

L'aliquotage n'est pas nécessaire pour le stockage à -20C

*** Les 20ul contiennent 0,1% de BSA.

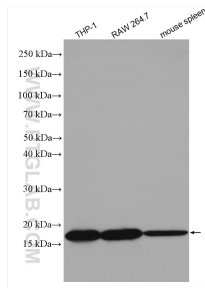
For technical support and original validation data for this product please contact:

T: 1 (888) 4PTGLAB (1-888-478-4522) (toll free in USA), or 1(312) 455-8498 (outside USA)

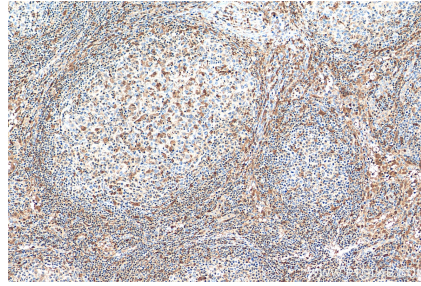
E: proteintech@ptglab.com
W: ptglab.com

This product is exclusively available under Proteintech Group brand and is not available to purchase from any other manufacturer.

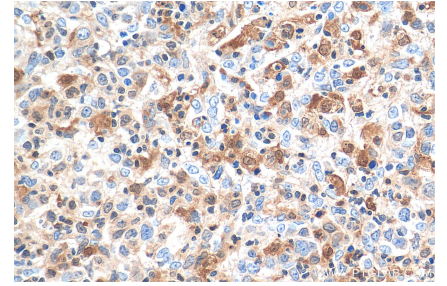
Données de validation sélectionnées



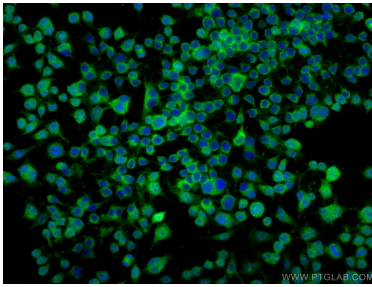
Various lysates were subjected to SDS PAGE followed by western blot with 15940-1-AP (TIPE2 antibody) at dilution of 1:3000 incubated at room temperature for 1.5 hours.



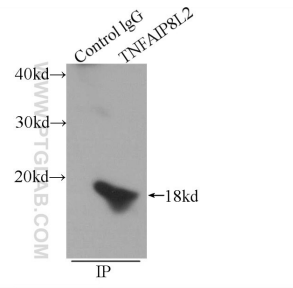
Immunohistochemical analysis of paraffin-embedded human lymphoma tissue slide using 15940-1-AP (TIPE2 antibody) at dilution of 1:200 (under 10x lens). Heat mediated antigen retrieval with Tris-EDTA buffer (pH 9.0).



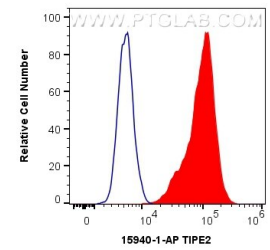
Immunohistochemical analysis of paraffin-embedded human lymphoma tissue slide using 15940-1-AP (TIPE2 antibody) at dilution of 1:200 (under 40x lens). Heat mediated antigen retrieval with Tris-EDTA buffer (pH 9.0).



Immunofluorescent analysis of (4% PFA) fixed RAW 264.7 cells using TIPE2 antibody (15940-1-AP) at dilution of 1:200 and CoraLite®488-Conjugated AffiniPure Goat Anti-Rabbit IgG(H+L).



IP Result of anti-TIPE2 (IP:15940-1-AP, 3ug; Detection:15940-1-AP 1:500) with mouse cerebellum tissue lysate 4000ug.



1×10^6 THP-1 cells were intracellularly stained with 0.4 ug Anti-Human TIPE2 (15940-1-AP) and CoraLite®488-Conjugated AffiniPure Goat Anti-Rabbit IgG(H+L) at dilution 1:1000 (red), or 0.4 ug Isotype Control. Cells were fixed with 4% PFA and permeabilized with Flow Cytometry Perm Buffer (PF00011-C).