

À des fins de recherche uniquement

# Anticorps Polyclonal de lapin anti-Glucagon



Numéro de catalogue: 15954-1-AP

31 Publications

## Informations de base

Numéro de catalogue:

15954-1-AP

Taille:

150ul, Concentration: 450 µg/ml by Nanodrop and 240 µg/ml by Bradford method using BSA as the standard;

Hôte:

Lapin

Isotype:

IgG

Immunogen Catalog Number:

AG8677

Numéro d'acquisition GenBank:

BC005278

Identification du gène (NCBI):

2641

Nom complet:

glucagon

MW calculé

180 aa, 21 kDa

Méthode de purification:

Purification par affinité contre l'antigène

Dilutions recommandées:

IHC 1:12800-1:51200

IF 1:200-1:800

## Applications

Applications testées:

IF, IHC, ELISA

Demandes citées:

IF, IHC

Spécificité de l'espèce:

Humain, rat, souris

Espèces citées:

Humain, rat, souris

**Remarque-IHC: il est suggéré de démasquer l'antigène avec un tampon de TE buffer pH 9,0; (\*) A défaut, le démasquage de l'antigène peut être effectué avec un tampon citrate pH 6,0.**

Contrôles positifs:

IHC : tissu pancréatique humain, tissu de côlon humain, tissu d'intestin grêle de souris, tissu d'intestin grêle humain, tissu pancréatique de rat

IF : tissu pancréatique de souris, tissu pancréatique humain

## Informations générales

Glucagon is a 29-amino acid peptide hormone secreted from the pancreatic alpha cells with a powerful stimulatory effect on hepatic glucose production acting to increase plasma glucose levels. Glucagon is best known as the counter-regulatory hormone to insulin, and normal glucose homeostasis depends largely on the balanced secretion of insulin and glucagon from the pancreatic beta and alpha cells, respectively. The regulation of glucose metabolism by glucagon is mediated by its direct action on the peripheral tissues such as the liver and also by the brain. Glucagon is also released postprandially in a transient manner, which was shown to be involved in inhibition of food intake via reduction of meal size.

## Publications notables

Autrice	Pubmed ID	Journal	Application
Xiaoyi Zhang	34556631	Cell Death Dis	IF
Nicholas C Vierra	28928238	Sci Signal	
Simeng Bao	34699923	Food Chem Toxicol	IF

## Stockage

Stockage:

Stocker à -20°C. Stable pendant un an après l'expédition.

Tampon de stockage:

PBS avec azoture de sodium à 0,02 % et glycérol à 50 % pH 7,3

L'aliquotage n'est pas nécessaire pour le stockage à -20C

\*\*\* Les 20ul contiennent 0,1% de BSA.

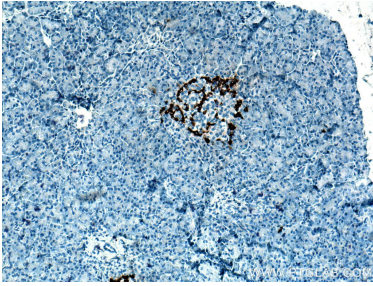
For technical support and original validation data for this product please contact:

T: 1 (888) 4PTGLAB (1-888-478-4522) (toll free in USA), or 1(312) 455-8498 (outside USA)

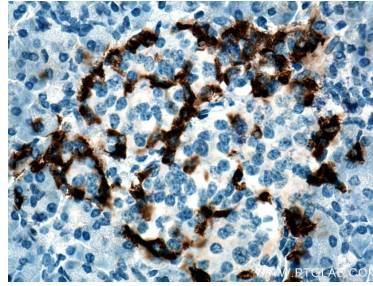
E: [proteintech@ptglab.com](mailto:proteintech@ptglab.com)  
W: [ptglab.com](http://ptglab.com)

This product is exclusively available under Proteintech Group brand and is not available to purchase from any other manufacturer.

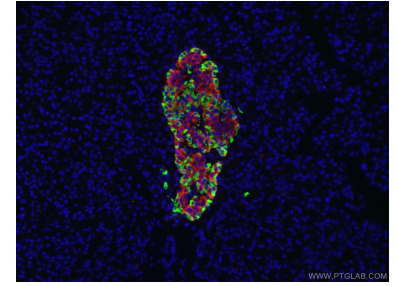
## Données de validation sélectionnées



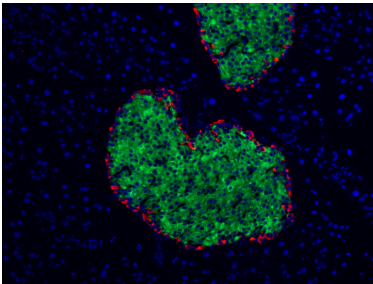
Immunohistochemical analysis of paraffin-embedded human pancreas tissue slide using 15954-1-AP (Glucagon antibody) at dilution of 1:25600 (under 10x lens). Heat mediated antigen retrieval with Tris-EDTA buffer (pH 9.0).



Immunohistochemical analysis of paraffin-embedded human pancreas tissue slide using 15954-1-AP (Glucagon antibody) at dilution of 1:25600 (under 40x lens). Heat mediated antigen retrieval with Tris-EDTA buffer (pH 9.0).



Immunofluorescent analysis of (4% PFA) fixed human pancreas tissue using 15954-1-AP (Glucagon antibody) at dilution of 1:50 and CoraLite488-Conjugated AffiniPure Goat Anti-Rabbit IgG(H+L). The B cells of the islets of Langerhans was labelled in red with 66198-1-Ig (INS antibody).



Immunofluorescent analysis of (4% PFA) fixed mouse pancreas tissue using 15954-1-AP (Glucagon antibody), at dilution of 1:400 and CoraLite@594-Conjugated AffiniPure Goat Anti-Rabbit IgG(H+L). The B cells of the islets of Langerhans was labelled in green with CL488-66198.