

À des fins de recherche uniquement

Anticorps Polyclonal de lapin anti-PLK2



Numéro de catalogue: 15956-1-AP

Phare

3 Publications

Informations de base

Numéro de catalogue:
15956-1-AP

Taille:
150ul, Concentration: 550 µg/ml by Nanodrop and 300 µg/ml by Bradford method using BSA as the standard;

Hôte:
Lapin

Isotype:
IgG

Immunogen Catalog Number:
AG8710

Numéro d'acquisition GenBank:
BC013879

Identification du gène (NCBI):
10769

Nom complet:
polo-like kinase 2 (Drosophila)

MW calculé
685 aa, 78 kDa

MW observés:
75-80 kDa

Méthode de purification:
Purification par affinité contre l'antigène

Dilutions recommandées:
WB 1:1000-1:4000
IP 0.5-4.0 ug for IP and 1:200-1:1000 for WB

Applications

Applications testées:
IP, WB, ELISA

Demandes citées:
IP, WB

Spécificité de l'espèce:
Humain, rat, souris

Espèces citées:
Humain, rat

Contrôles positifs:

WB : cellules HeLa, cellules COLO 320, cellules MCF-7

IP : cellules HeLa,

Informations générales

PLK2 (Polo-like kinase 2) is also named as SNK and belongs to the Ser/Thr protein kinase family. It plays a role in normal cell division. Plk2 expression is detected only in G1, and endogenous Plk2 is rapidly turned over. Therefore, the expression of the three mammalian Plks during the cell cycle resembles the successive transition of the cyclins, prompting speculation that Plks may regulate the cell cycle in a manner analogous to that of Cdk's (PMID:12972611).

Publications notables

| Autrice | Pubmed ID | Journal | Application |
|---------------|-----------|-----------------------|-------------|
| Yazhi Fan | 34047419 | J Biochem Mol Toxicol | WB |
| Chun-Hua Wang | 34314079 | Cell Biol Int | IP |
| Fei Liu | 26910911 | Oncotarget | WB |

Stockage

Stockage:

Stocker à -20°C. Stable pendant un an après l'expédition.

Tampon de stockage:

PBS avec azoture de sodium à 0,02 % et glycérol à 50 % pH 7,3

L'aliquotage n'est pas nécessaire pour le stockage à -20C

*** Les 20ul contiennent 0,1% de BSA.

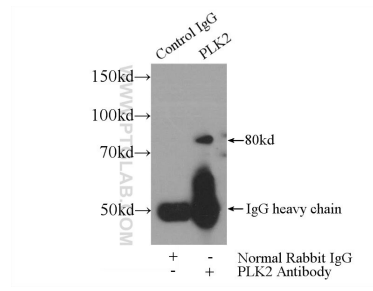
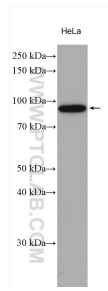
For technical support and original validation data for this product please contact:

T: 1 (888) 4PTGLAB (1-888-478-4522) (toll free in USA), or 1(312) 455-8498 (outside USA)

E: proteintech@ptglab.com
W: ptglab.com

This product is exclusively available under Proteintech Group brand and is not available to purchase from any other manufacturer.

Données de validation sélectionnées



HeLa cells were subjected to SDS PAGE followed by western blot with 15956-1-AP (PLK2 antibody) at dilution of 1:2000 incubated at room temperature for 1.5 hours.

IP Result of anti-PLK2 (IP:15956-1-AP, 4ug; Detection:15956-1-AP 1:300) with HeLa cells lysate 2480ug.