

À des fins de recherche uniquement

# Anticorps Polyclonal de lapin anti-SEC24A



Numéro de catalogue: 15958-1-AP

Phare

9 Publications

## Informations de base

Numéro de catalogue:

15958-1-AP

Taille:

150ul, Concentration: 450 µg/ml by Nanodrop and 267 µg/ml by Bradford method using BSA as the standard;

Hôte:

Lapin

Isotype:

IgG

Immunogen Catalog Number:

AG8723

Numéro d'acquisition GenBank:

BC019341

Identification du gène (NCBI):

10802

Nom complet:

SEC24 family, member A (S. cerevisiae)

MW calculé

613 aa, 66 kDa

MW observés:

66 kDa, 120 kDa

Méthode de purification:

Purification par affinité contre l'antigène

Dilutions recommandées:

WB 1:500-1:3000

IHC 1:20-1:200

IF 1:10-1:100

## Applications

Applications testées:

IF, IHC, WB, ELISA

Demandes citées:

IF, IP, WB

Spécificité de l'espèce:

Humain, rat, singe, souris

Espèces citées:

Humain, souris

**Remarque-IHC: il est suggéré de démasquer l'antigène avec un tampon de TE buffer pH 9,0; (\*) A défaut, 'le démasquage de l'antigène peut être effectué avec un tampon citrate pH 6,0.**

Contrôles positifs:

WB : cellules COS-7, cellules HEK-293, cellules HeLa, cellules HepG2, cellules NIH/3T3, tissu de muscle squelettique de souris, tissu de thymus de rat, tissu de thymus de souris, tissu hépatique humain

IHC : tissu de lymphome humain,

IF : cellules HeLa,

## Informations générales

COP11-coated vesicles mediate anterograde transport from the ER to the Golgi apparatus. COP11 is composed of three parts: two coat protein complexes (Sec23/24 complex and Sec13/31 complex) and one small GTP-binding protein, Sar1 (PMID: 9568718). Sec24 subunit of the coat complex has been implicated in cargo recognition (PMID: 17316621). In mammal cells there are four Sec24 isoforms, termed Sec24A, Sec24B, Sec24C, and Sec24D (PMID: 10329445). Two isoforms of 120 kDa and 66 kDa produced by alternative splicing have been described.

## Publications notables

Autrice	Pubmed ID	Journal	Application
Colin T Stomberski	36288700	Cell Rep	WB
Mengyue You	36252341	Redox Biol	WB, IF
Helene Möllerherm	28553287	Front Immunol	WB

## Stockage

Stockage:

Stocker à -20°C. Stable pendant un an après l'expédition.

Tampon de stockage:

PBS avec azoture de sodium à 0,02 % et glycérol à 50 % pH 7,3

L'aliquotage n'est pas nécessaire pour le stockage à -20C

\*\*\* Les 20ul contiennent 0,1% de BSA.

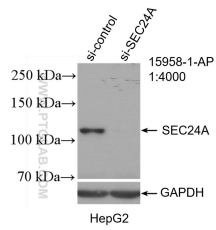
For technical support and original validation data for this product please contact:

T: 1 (888) 4PTGLAB (1-888-478-4522) (toll free in USA), or 1(312) 455-8498 (outside USA)

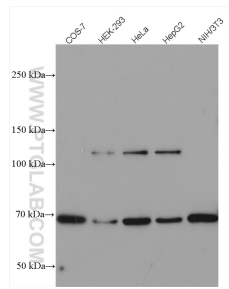
E: [proteintech@ptglab.com](mailto:proteintech@ptglab.com)  
W: [ptglab.com](http://ptglab.com)

This product is exclusively available under Proteintech Group brand and is not available to purchase from any other manufacturer.

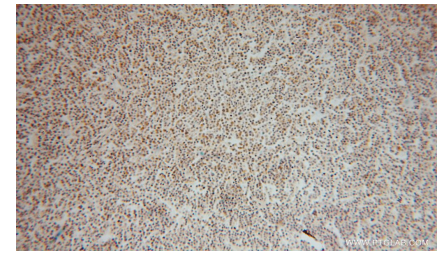
## Données de validation sélectionnées



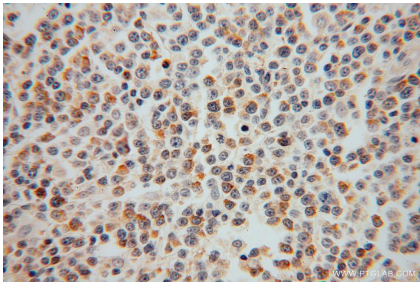
WB result of SEC24A antibody (15958-1-AP; 1:4000; incubated at room temperature for 1.5 hours) with sh-Control and sh-SEC24A transfected HeLa cells.



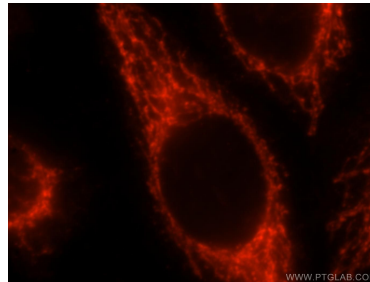
Various lysates were subjected to SDS PAGE followed by western blot with 15958-1-AP (SEC24A antibody) at dilution of 1:1500 incubated at room temperature for 1.5 hours.



Immunohistochemical analysis of paraffin-embedded human lymphoma using 15958-1-AP (SEC24A antibody) at dilution of 1:50 (under 10x lens).



Immunohistochemical analysis of paraffin-embedded human lymphoma using 15958-1-AP (SEC24A antibody) at dilution of 1:50 (under 40x lens).



Immunofluorescent analysis of HeLa cells, using SEC24A antibody 15958-1-AP at 1:25 dilution and Rhodamine-labeled goat anti-rabbit IgG (red).