

À des fins de recherche uniquement

Anticorps Polyclonal de lapin anti-MBD5



Numéro de catalogue: 15961-1-AP

Phare

4 Publications

Informations de base

Numéro de catalogue:

15961-1-AP

Taille:

150ul, Concentration: 350 µg/ml by Nanodrop and 260 µg/ml by Bradford method using BSA as the standard;

Hôte:

Lapin

Isotype:

IgG

Immunogen Catalog Number:

AG8728

Numéro d'acquisition GenBank:

BC014534

Identification du gène (NCBI):

55777

Nom complet:

methyl-CpG binding domain protein 5

MW calculé

292 aa, 31 kDa, 160 kDa

MW observés:

160 kDa

Méthode de purification:

Purification par affinité contre l'antigène

Dilutions recommandées:

WB 1:500-1:1000

Applications

Applications testées:

WB, ELISA

Demandes citées:

IF, IHC, WB

Spécificité de l'espèce:

Humain, souris

Espèces citées:

Humain, souris

Contrôles positifs:

WB : tissu cardiaque de souris, tissu de muscle squelettique de souris, tissu de muscle squelettique humain

Informations générales

In vertebrates, cytosine methylation in DNA is one of the major epigenetic modifications, which regulates many cellular events, including developmental gene expression, X chromosome inactivation, genome defense, and genomic imprinting. DNA methylation exerts regulatory functions by recruiting specific binding proteins that contain a highly conserved methyl-CpG binding domain (MBD) [PMID:12610534,16403636]. Methyl-CpG binding domain protein 5 (MBD5) belongs to the MBD family proteins, which play central roles in transcriptional regulation and development. It is a candidate gene involved in human 2q23.1 microdeletion syndrome [PMID:23077600].

Publications notables

Autrice	Pubmed ID	Journal	Application
Xiao-Hui Wang	34103526	Nat Commun	WB
Mei-Rong Liang	31313936	Genet Test Mol Biomarkers	WB
Mariana Martins	37628781	Int J Mol Sci	IF

Stockage

Stockage:

Stocker à -20°C. Stable pendant un an après l'expédition.

Tampon de stockage:

PBS avec azoture de sodium à 0,02 % et glycérol à 50 % pH 7,3

L'aliquotage n'est pas nécessaire pour le stockage à -20C

*** Les 20ul contiennent 0,1% de BSA.

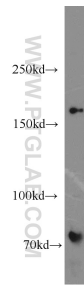
For technical support and original validation data for this product please contact:

T: 1 (888) 4PTGLAB (1-888-478-4522) (toll free in USA), or 1(312) 455-8498 (outside USA)

E: proteintech@ptglab.com
W: ptglab.com

This product is exclusively available under Proteintech Group brand and is not available to purchase from any other manufacturer.

Données de validation sélectionnées



mouse heart tissue were subjected to SDS PAGE followed by western blot with 15961-1-AP (MBD5 antibody) at dilution of 1:500 incubated at room temperature for 1.5 hours.