

À des fins de recherche uniquement

Anticorps Polyclonal de lapin anti-CLIC3



Numéro de catalogue: 15971-1-AP

2 Publications

Informations de base

Numéro de catalogue:

15971-1-AP

Taille:

150ul, Concentration: 400 µg/ml by Nanodrop and 233 µg/ml by Bradford method using BSA as the standard;

Hôte:

Lapin

Isotype:

IgG

Immunogen Catalog Number:

AG8757

Numéro d'acquisition GenBank:

BC007012

Identification du gène (NCBI):

9022

Nom complet:

chloride intracellular channel 3

MW calculé

236 aa, 26 kDa

MW observés:

27-30 kDa

Méthode de purification:

Purification par affinité contre l'antigène

Dilutions recommandées:

WB 1:1000-1:6000

IHC 1:50-1:500

IF 1:10-1:100

Applications

Applications testées:

IF, IHC, WB, ELISA

Demandes citées:

IHC, WB

Spécificité de l'espèce:

Humain, rat, souris

Espèces citées:

Humain, rat

Remarque-IHC: il est suggéré de démasquer l'antigène avec un tampon de TE buffer pH 9,0; (*) A défaut, le démasquage de l'antigène peut être effectué avec un tampon citrate pH 6,0.

Contrôles positifs:

WB : cellules JAR, tissu placentaire humain, tissu rénal de rat, tissu rénal de souris

IHC : tissu placentaire humain,

IF : cellules MCF-7,

Informations générales

Chloride channels are a diverse group of proteins that regulate fundamental cellular processes including stabilization of cell membrane potential, transepithelial transport, maintenance of intracellular pH, and regulation of cell volume (PMID: 9880541). CLIC3 (chloride intracellular channel protein 3) belongs to the chloride channel CLIC family which has seven members based on sequence homology to the p64 chloride channels of bovine kidney microsomes. CLIC proteins lack the membrane-spanning domains characteristic of channel proteins and are largely intracellular. CLIC3 is predominantly localized in the nucleus and has a high expression level in placenta (PMID: 9880541; 17027078). It associates with the C-terminal of ERK7 and may participate in cellular growth control.

Publications notables

Autrice	Pubmed ID	Journal	Application
Liddelow Shane A SA	23843944	PLoS One	IHC
Gang Liu	32328183	J Cancer	WB

Stockage

Stockage:

Stocker à -20°C. Stable pendant un an après l'expédition.

Tampon de stockage:

PBS avec azoture de sodium à 0,02 % et glycérol à 50 % pH 7,3

L'aliquotage n'est pas nécessaire pour le stockage à -20C

*** Les 20ul contiennent 0,1% de BSA.

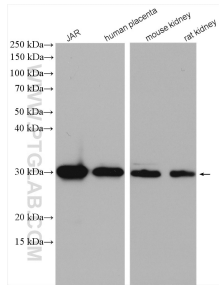
For technical support and original validation data for this product please contact:

T: 1 (888) 4PTGLAB (1-888-478-4522) (toll free in USA), or 1(312) 455-8498 (outside USA)

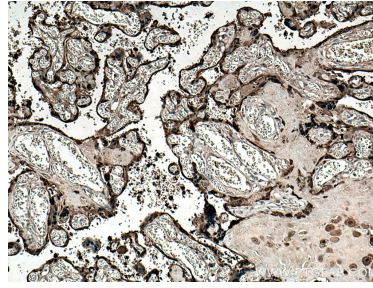
E: proteintech@ptglab.com
W: ptglab.com

This product is exclusively available under Proteintech Group brand and is not available to purchase from any other manufacturer.

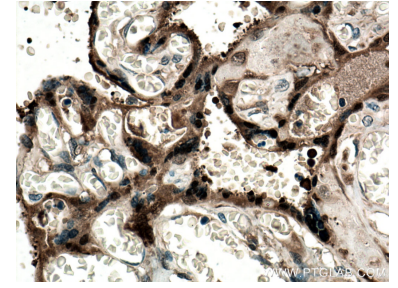
Données de validation sélectionnées



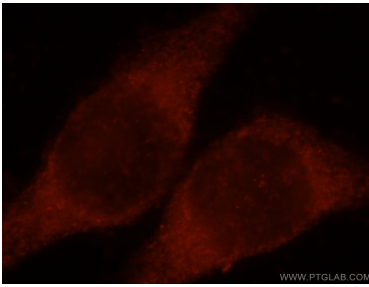
Various lysates were subjected to SDS PAGE followed by western blot with 15971-1-AP (CLIC3 antibody) at dilution of 1:3000 incubated at room temperature for 1.5 hours.



Immunohistochemical analysis of paraffin-embedded human placenta tissue slide using 15971-1-AP (CLIC3 antibody) at dilution of 1:200 (under 10x lens. Heat mediated antigen retrieval with Tris-EDTA buffer (pH 9.0)).



Immunohistochemical analysis of paraffin-embedded human placenta tissue slide using 15971-1-AP (CLIC3 antibody) at dilution of 1:200 (under 40x lens. Heat mediated antigen retrieval with Tris-EDTA buffer (pH 9.0)).



Immunofluorescent analysis of MCF-7 cells, using CLIC3 antibody 15971-1-AP at 1:25 dilution and Rhodamine-labeled goat anti-rabbit IgG (red).