

À des fins de recherche uniquement

Anticorps Polyclonal de lapin anti- ISG15



Numéro de catalogue: 15981-1-AP

Phare

44 Publications

Informations de base

Numéro de catalogue:

15981-1-AP

Taille:

150ul, Concentration: 450 µg/ml by Nanodrop;

Hôte:

Lapin

Isotype:

IgG

Immunogen Catalog Number:

AG8782

Numéro d'acquisition GenBank:

BC009507

Identification du gène (NCBI):

9636

Nom complet:

ISG15 ubiquitin-like modifier

MW calculé

165 aa, 18 kDa

MW observés:

15-17 kDa

Méthode de purification:

Purification par affinité contre l'antigène

Dilutions recommandées:

WB 1:1000-1:4000

IP 0.5-4.0 µg for IP and 1:500-1:1000 for WB

IF 1:50-1:500

Applications

Applications testées:

IF, IP, WB, ELISA

Demandes citées:

IF, IHC, IP, WB

Spécificité de l'espèce:

Humain, souris

Espèces citées:

Chèvre, Humain, porc, singe, souris

Contrôles positifs:

WB : cellules HeLa, cellules A549, cellules HepG2, cellules MCF-7, cellules PC-3, tissu cérébral humain

IP : cellules HeLa,

IF : tissu cérébral de souris, cellules HeLa

Informations générales

ISG15 is a ubiquitin-like protein that becomes conjugated to many cellular proteins upon activation by interferon-alpha (IFNA) and -beta (IFNB). ISG15 forms covalent conjugates with its target proteins in a process called ISGylation, which in mammals is known to play a role in antiviral immunity. ISG15 proteins possess two ubiquitin-like (UBL) domains and a highly conserved C-terminal LRGG sequence, the latter being known as the ubiquitin conjugation motif. Intracellular ISG15 are conjugated, via the LRGG motif, to target proteins through a process called ISGylation, which resembles largely ubiquitination, the process of formation of ubiquitin conjugates. Unconjugated extracellular ISG15, which are released from several types of human and murine cells, are known to possess cytokine-like activity.

Publications notables

| Autrice | Pubmed ID | Journal | Application |
|----------------------|-----------|-------------------|-------------|
| Zemin Zhu | 36175845 | BMC Mol Cell Biol | WB |
| Dulcemaria Hernandez | 36154443 | mBio | WB |
| Stephen C Walsh | 36084633 | Cell Host Microbe | WB |

Stockage

Stockage:

Stocker à -20°C. Stable pendant un an après l'expédition.

Tampon de stockage:

PBS avec azoture de sodium à 0,02 % et glycérol à 50 % pH 7,3

L'aliquotage n'est pas nécessaire pour le stockage à -20C

*** Les 20ul contiennent 0,1% de BSA.

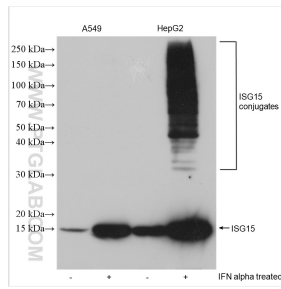
For technical support and original validation data for this product please contact:

T: 1 (888) 4PTGLAB (1-888-478-4522) (toll free in USA), or 1(312) 455-8498 (outside USA)

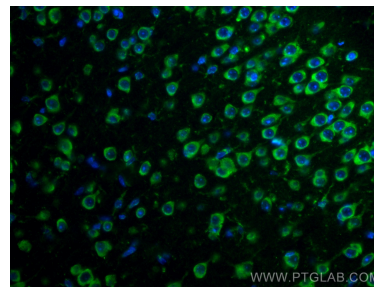
E: proteintech@ptglab.com
W: ptglab.com

This product is exclusively available under Proteintech Group brand and is not available to purchase from any other manufacturer.

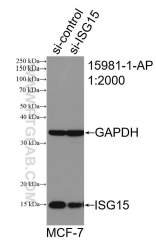
Données de validation sélectionnées



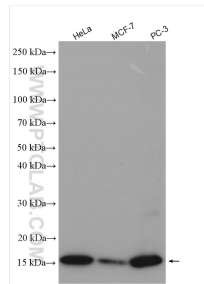
Untreated and IFN alpha treated A459 cells, untreated and IFN alpha treated HepG2 cells were subjected to SDS PAGE followed by western blot with 15981-1-AP (ISG15 antibody) at dilution of 1:2500 incubated at room temperature for 1.5 hours.



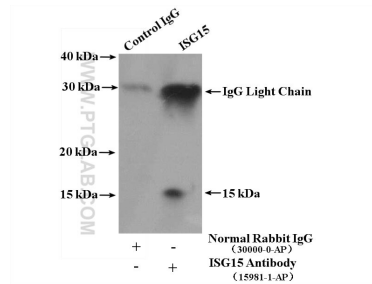
Immunofluorescent analysis of (4% PFA) fixed mouse brain tissue using ISG15 antibody (15981-1-AP) at dilution of 1:200 and CoraLite® 488-Conjugated AffiniPure Goat Anti-Rabbit IgG(H+L).



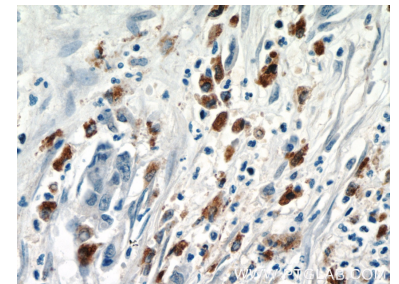
WB result of ISG15 antibody (15981-1-AP; 1:1000; incubated at room temperature for 1.5 hours) with sh-Control and sh-ISG15 transfected MCF-7 cells.



Various lysates were subjected to SDS PAGE followed by western blot with 15981-1-AP (ISG15 antibody) at dilution of 1:2000 incubated at room temperature for 1.5 hours.



IP Result of anti-ISG15 (IP:15981-1-AP, 4ug; Detection:15981-1-AP 1:500) with HeLa cells lysate 3200ug.



Immunohistochemical analysis of paraffin-embedded human pancreas cancer tissue slide using 15981-1-AP (ISG15 Antibody) at dilution of 1:50 (under 40x lens).