

À des fins de recherche uniquement

Anticorps Polyclonal de lapin anti-PRCP



Numéro de catalogue: 15995-1-AP

2 Publications

Informations de base

Numéro de catalogue:

15995-1-AP

Taille:

150ul, Concentration: 350 µg/ml by Nanodrop and 267 µg/ml by Bradford method using BSA as the standard;

Hôte:

Lapin

Isotype:

IgG

Immunogen Catalog Number:

AG8869

Numéro d'acquisition GenBank:

BC001500

Identification du gène (NCBI):

5547

Nom complet:

prolylcarboxypeptidase (angiotensinase C)

MW calculé

496 aa, 56 kDa

MW observés:

56 kDa

Méthode de purification:

Purification par affinité contre l'antigène

Dilutions recommandées:

WB 1:500-1:1000

IP 0.5-4.0 ug for IP and 1:200-1:1000 for WB

IHC 1:50-1:500

Applications

Applications testées:

IHC, IP, WB, ELISA

Demandes citées:

IF, WB

Spécificité de l'espèce:

Humain, souris

Espèces citées:

Humain, souris

Remarque-IHC: il est suggéré de démasquer l'antigène avec un tampon de TE buffer pH 9,0; (*) A défaut, 'le démasquage de l'antigène peut être 'effectué avec un tampon citrate pH 6,0.

Contrôles positifs:

WB : cellules A549,

IP : cellules L02,

IHC : tissu de cancer du poumon humain,

Informations générales

PRCP(Lysosomal Pro-X carboxypeptidase) is also named as PCP and belongs to the peptidase S28 family. This enzyme cleaves C-terminal amino acids linked to proline in peptides such as angiotensin II, III and des-Arg9-bradykinin. PRCP is both a PK activator and an angiotensin II inactivator indicates another previously unappreciated interaction between the plasma kallikrein/kinin and the renin-angiotensin systems(PMID:11830581).Some previous gelfiltration and dynamic-light scattering results suggested that PRCP is a dimer in solution(PMID:20540760). The full length protein has a signal peptide, a propeptide and six glycosylation sites and can exist as 65 kDa modified protein.

Publications notables

Autrice	Pubmed ID	Journal	Application
Christelle Lenain	26354777	Carcinogenesis	WB
Qiao Deng	37012493	Acta Pharmacol Sin	WB,IF

Stockage

Stockage:

Stocker à -20°C. Stable pendant un an après l'expédition.

Tampon de stockage:

PBS avec azoture de sodium à 0,02 % et glycérol à 50 % pH 7,3

L'aliquotage n'est pas nécessaire pour le stockage à -20C

*** Les 20ul contiennent 0,1% de BSA.

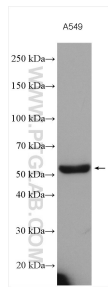
For technical support and original validation data for this product please contact:

T: 1 (888) 4PTGLAB (1-888-478-4522) (toll free in USA), or 1(312) 455-8498 (outside USA)

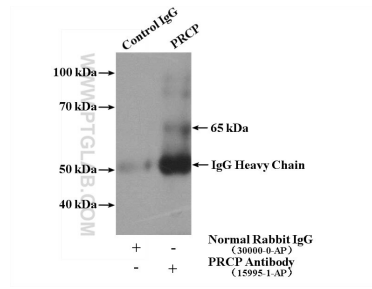
E: proteintech@ptglab.com
W: ptglab.com

This product is exclusively available under Proteintech Group brand and is not available to purchase from any other manufacturer.

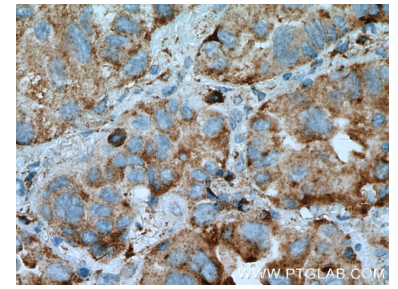
Données de validation sélectionnées



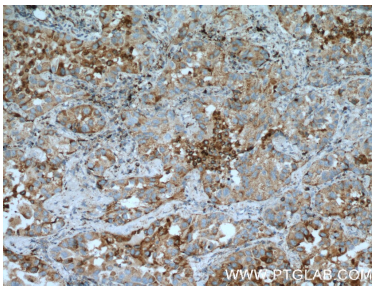
A549 lysates were subjected to SDS PAGE followed by western blot with 15995-1-AP (PRCP antibody) at dilution of 1:500 incubated at room temperature for 1.5 hours.



IP Result of anti-PRCP (IP:15995-1-AP, 4ug; Detection:15995-1-AP 1:300) with L02 cells lysate 1800ug.



Immunohistochemical analysis of paraffin-embedded human lung cancer tissue slide using 15995-1-AP (PRCP Antibody) at dilution of 1:200 (under 40x lens).



Immunohistochemical analysis of paraffin-embedded human lung cancer tissue slide using 15995-1-AP (PRCP Antibody) at dilution of 1:200 (under 10x lens).