

À des fins de recherche uniquement

Anticorps Polyclonal de lapin anti-ANT1/2



Numéro de catalogue: 15997-1-AP

4 Publications

Informations de base

Numéro de catalogue:

15997-1-AP

Taille:

150ul, Concentration: 600 µg/ml by Nanodrop and 327 µg/ml by Bradford method using BSA as the standard;

Hôte:

Lapin

Isotype:

IgG

Immunogen Catalog Number:

AG7787

Numéro d'acquisition GenBank:

BC008664

Identification du gène (NCBI):

291

Nom complet:

solute carrier family 25 (mitochondrial carrier; adenine nucleotide translocator), member 4

MW calculé

33 kDa

MW observés:

33 kDa

Méthode de purification:

Purification par affinité contre l'antigène

Dilutions recommandées:

WB 1:500-1:1000

IP 0.5-4.0 ug for IP and 1:500-1:1000 for WB

Applications

Applications testées:

IP, WB, ELISA

Demandes citées:

CoIP, WB

Spécificité de l'espèce:

Humain, rat, souris

Espèces citées:

Humain, porc, souris

Contrôles positifs:

WB : tissu cardiaque humain, cellules MCF-7, tissu cérébral de souris, tissu de muscle squelettique de souris

IP : tissu cardiaque de souris,

Informations générales

Adenine nucleotide translocators (ANTs) are mitochondrial carrier proteins that exchange ATP and ADP between the cytoplasm and the mitochondrial matrix. Four isoforms of ANT were identified: ANT1 (encoded by SLC25A4) is highly expressed in different tissues; ANT2 (encoded by SLC25A5) is predominantly expressed in proliferating, regenerating, or undifferentiated cells; ANT3 is ubiquitously expressed; ANT4 is mainly expressed in testis and germ cells. This antibody recognizes both of ANT1 and ANT2.

Publications notables

Autrice	Pubmed ID	Journal	Application
Xiaomin Zhao	35863430	J Biol Chem	WB
Xingzhao Ji	37182101	iScience	WB, CoIP
Ji Geng	37040696	Dev Cell	WB

Stockage

Stockage:

Stocker à -20°C. Stable pendant un an après l'expédition.

Tampon de stockage:

PBS avec azoture de sodium à 0,02 % et glycérol à 50 % pH 7,3

L'aliquotage n'est pas nécessaire pour le stockage à -20C

*** Les 20ul contiennent 0,1% de BSA.

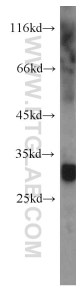
For technical support and original validation data for this product please contact:

T: 1 (888) 4PTGLAB (1-888-478-4522) (toll free in USA), or 1(312) 455-8498 (outside USA)

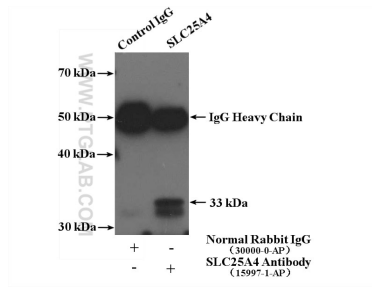
E: proteintech@ptglab.com
W: ptglab.com

This product is exclusively available under Proteintech Group brand and is not available to purchase from any other manufacturer.

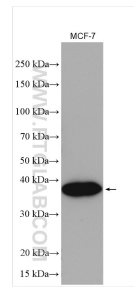
Données de validation sélectionnées



human heart tissue were subjected to SDS PAGE followed by western blot with 15997-1-AP (ANT1/2 antibody) at dilution of 1:800 incubated at room temperature for 1.5 hours.



IP Result of anti-ANT1/2 (IP:15997-1-AP, 4ug; Detection:15997-1-AP 1:500) with mouse heart tissue lysate 4000ug.



MCF-7 cells were subjected to SDS PAGE followed by western blot with 15997-1-AP (ANT1/2 antibody) at dilution of 1:500 incubated at room temperature for 1.5 hours.