

À des fins de recherche uniquement

Anticorps Polyclonal de lapin anti-GTF2H2



Numéro de catalogue: 16005-1-AP

2 Publications

Informations de base

Numéro de catalogue: 16005-1-AP	Numéro d'acquisition GenBank: BC005345	Méthode de purification: Purification par affinité contre l'antigène
Taille: 150ul , Concentration: 400 µg/ml by Nanodrop and 287 µg/ml by Bradford method using BSA as the standard;	Identification du gène (NCBI): 2966	Dilutions recommandées: WB 1:500-1:1000
Hôte: Lapin	Nom complet: general transcription factor IIH, polypeptide 2, 44kDa	
Isotype: IgG	MW calculé 395aa,44 kDa; 165aa,19 kDa	
Immunogen Catalog Number: AG8653	MW observés: 44 kDa	

Applications

Applications testées: WB,ELISA	Contrôles positifs: WB : cellules K-562, cellules HepG2
Demandes citées: WB	
Spécificité de l'espèce: Humain, souris	
Espèces citées: Humain	

Informations générales

Transcription factor IIH(TFIIH) is associated with the RNA polymerase II transcription complex, which is involved in transcription and transcription-mediated DNA repair. GTF2H2(GENERAL TRANSCRIPTION FACTOR IIH, POLYPEPTIDE 2) is one of the six subunits forming the core-TFIIH basal transcriptional factor. TFIIH plays a role in nucleotide excision repair (NER) of DNA and, when complexed to CAK, in RNA transcription by RNA polymerase II. The N terminus of GTF2H2 interacts with and regulates XPD, and an intact C terminus is required for a successful escape of RNAPol II from the promoter. This is a rabbit polyclonal antibody produced by part of N-terminal GTF2H2 of human origin.

Publications notables

Autrice	Pubmed ID	Journal	Application
Zhenkun Li	36116407	Tissue Cell	WB
Ashleigh E Schaffer	24766810	Cell	WB

Stockage

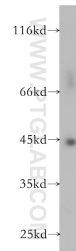
Stockage:
Stocker à -20°C. Stable pendant un an après l'expédition.
Tampon de stockage:
PBS avec azoture de sodium à 0,02 % et glycérol à 50 % pH 7,3
L'aliqotage n'est pas nécessaire pour le stockage à -20C

*** Les 20ul contiennent 0,1% de BSA.

For technical support and original validation data for this product please contact:
T: 1 (888) 4PTGLAB (1-888-478-4522) (toll free in USA), or 1(312) 455-8498 (outside USA)
E: proteintech@ptglab.com
W: ptglab.com

This product is exclusively available under Proteintech Group brand and is not available to purchase from any other manufacturer.

Données de validation sélectionnées



K-562 cells were subjected to SDS PAGE followed by western blot with 16005-1-AP (GTF2H2 antibody) at dilution of 1:500 incubated at room temperature for 1.5 hours.