

À des fins de recherche uniquement

Anticorps Polyclonal de lapin anti-CYFIP1/2



Numéro de catalogue: 16011-1-AP

1 Publications

Informations de base

Numéro de catalogue: 16011-1-AP	Numéro d'acquisition GenBank: BC011762	Méthode de purification: Purification par affinité contre l'antigène
Taille: 150ul, Concentration: 350 µg/ml by Nanodrop and 193 µg/ml by Bradford method using BSA as the standard;	Identification du gène (NCBI): 26999	Dilutions recommandées: WB 1:500-1:1000 IP 0.5-4.0 ug for IP and 1:500-1:1000 for WB IHC 1:300-1:1200
Hôte: Lapin	Nom complet: cytoplasmic FMR1 interacting protein 2	
Isotype: IgG	MW calculé: 148 kDa	
Immunogen Catalog Number: AG8749	MW observés: 130 kDa	

Applications

Applications testées:
FC, IHC, IP, WB, ELISA

Demandes citées:
WB

Spécificité de l'espèce:
Humain, rat, souris

Espèces citées:
Humain

Remarque-IHC: il est suggéré de démasquer l'antigène avec un tampon de TE buffer pH 9,0; (*) A défaut, 'le démasquage de l'antigène peut être effectué avec un tampon citrate pH 6,0.

Contrôles positifs:

WB : tissu cérébral humain, tissu cérébral de rat, tissu cérébral de souris

IP : tissu cérébral de souris,

IHC : tissu cérébral de souris, tissu de gliome humain, tissu rénal humain

Informations générales

CYFIP1/2 belongs to the CYFIP family and is involved in T-cell adhesion and p53-dependent induction of apoptosis. CYFIP1 contains 1,253 amino acids and shares 88% sequence identity with CYFIP2. CYFIP1 and CYFIP2 are members of a highly conserved protein family and share approximately 99% sequence identity with their mouse orthologs. CYFIP1 has been shown to interact with the small GTPase RAC1, which is implicated in development and maintenance of neuronal structures. Consistent with FMRP and RAC1 localization in dendritic fine structures, CYFIP1/2 are present in synaptosomal extracts. This antibody can recognize both CYFIP1 and CYFIP2.

Publications notables

Autrice	Pubmed ID	Journal	Application
Nachmany Henny H	22430187	Dis Markers	WB

Stockage

Stockage:

Stocker à -20°C. Stable pendant un an après l'expédition.

Tampon de stockage:

PBS avec azoture de sodium à 0,02 % et glycérol à 50 % pH 7,3

L'aliquotage n'est pas nécessaire pour le stockage à -20C

*** Les 20ul contiennent 0,1% de BSA.

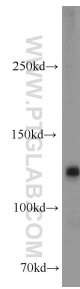
For technical support and original validation data for this product please contact:

T: 1 (888) 4PTGLAB (1-888-478-4522) (toll free in USA), or 1(312) 455-8498 (outside USA)

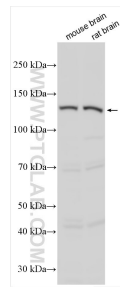
E: proteintech@ptglab.com
W: ptglab.com

This product is exclusively available under Proteintech Group brand and is not available to purchase from any other manufacturer.

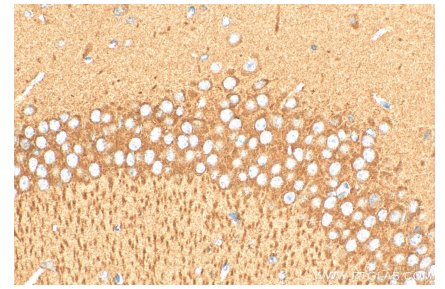
Données de validation sélectionnées



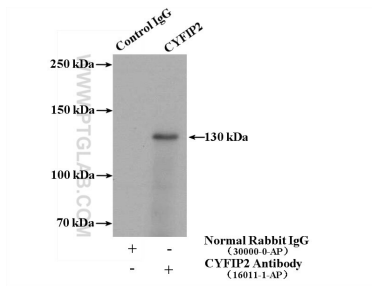
human brain tissue were subjected to SDS PAGE followed by western blot with 16011-1-AP (CYFIP2 antibody) at dilution of 1:1000 incubated at room temperature for 1.5 hours.



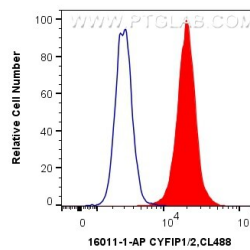
Various lysates were subjected to SDS PAGE followed by western blot with 16011-1-AP (CYFIP1/2 antibody) at dilution of 1:1500 incubated at room temperature for 1.5 hours.



Immunohistochemical analysis of paraffin-embedded mouse brain tissue slide using 16011-1-AP (CYFIP1/2 antibody) at dilution of 1:600 (under 40x lens). Heat mediated antigen retrieval with Tris-EDTA buffer (pH 9.0).



IP Result of anti-CYFIP2 (IP:16011-1-AP, 4ug; Detection:16011-1-AP 1:700) with mouse brain tissue lysate 4000ug.



1X10⁶ Jurkat cells were intracellularly stained with 0.4 ug Anti-Human CYFIP1/2 (16011-1-AP) and CoraLite®488-Conjugated AffiniPure Goat Anti-Rabbit IgG(H+L) at dilution 1:1000 (red), or 0.4 ug Control Antibody. Cells were fixed with 4% PFA and permeabilized with Flow Cytometry Perm Buffer (PF00011-C).