

À des fins de recherche uniquement

Anticorps Polyclonal de lapin anti-MMS19



Numéro de catalogue: 16015-1-AP

Phare

16 Publications

Informations de base

| | | |
|---|---|--|
| Numéro de catalogue: 16015-1-AP | Numéro d'acquisition GenBank: BC006575 | Méthode de purification: Purification par affinité contre l'antigène |
| Taille: 150ul , Concentration: 500 µg/ml by Nanodrop; | Identification du gène (NCBI): 64210 | Dilutions recommandées: WB 1:1000-1:6000 IF 1:50-1:500 |
| Hôte: Lapin | Nom complet: MMS19 nucleotide excision repair homolog (S. cerevisiae) | |
| Isotype: IgG | MW calculé 1030 aa, 113 kDa | |
| Immunogen Catalog Number: AG8792 | MW observés: 103-113 kDa | |

Applications

| | |
|--|--|
| Applications testées: IF, WB, ELISA | Contrôles positifs: |
| Demandes citées: WB | WB : cellules HEK-293, cellules PC-3, tissu cérébral humain |
| Spécificité de l'espèce: Humain, rat, souris | IF : cellules HeLa, |
| Espèces citées: Humain, souris | |

Informations générales

MMS19 plays a critical role in the biogenesis of multiple Fe-S proteins, which functions in genomic stability, RNA polymerase II function, and telomere length regulation. MMS19 has a alanine- and leucine-rich N terminus. It possible has a role in nucleotide excision repair(NER) and RNA polymerase II(POL II) transcription by interacting with ERCC2/XPB helicases, both subunits of NER-transcription factor TFIIH. Also MMS19 involves in the regulation of ER. It can function in chromosome segregation by acting as a part of the mitotic spindle-associated MMXD complex.

Publications notables

| Autrice | Pubmed ID | Journal | Application |
|-----------------|-----------|-------------|-------------|
| Seung Wook Yang | 33004795 | Nat Commun | WB |
| Xiaorui Fan | 35654137 | J Biol Chem | WB |
| Laura Mariotti | 32576938 | Commun Biol | WB |

Stockage

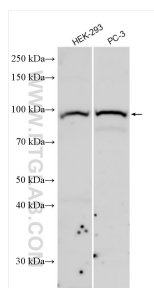
Stockage:
Stocker à -20°C. Stable pendant un an après l'expédition.
Tampon de stockage:
PBS avec azoture de sodium à 0,02 % et glycérol à 50 % pH 7,3
L'aliquotage n'est pas nécessaire pour le stockage à -20C

*** Les 20ul contiennent 0,1% de BSA.

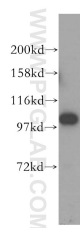
For technical support and original validation data for this product please contact:
T: 1 (888) 4PTGLAB (1-888-478-4522) (toll free in USA), or 1(312) 455-8498 (outside USA)
E: proteintech@ptglab.com
W: ptglab.com

This product is exclusively available under Proteintech Group brand and is not available to purchase from any other manufacturer.

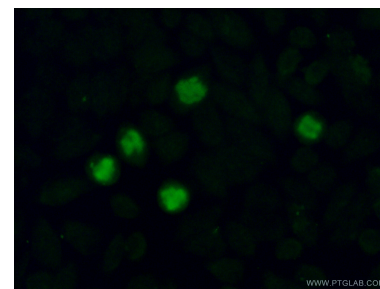
Données de validation sélectionnées



Various lysates were subjected to SDS PAGE followed by western blot with 16015-1-AP (MMS19 antibody) at dilution of 1:3000 incubated at room temperature for 1.5 hours.



human brain tissue were subjected to SDS PAGE followed by western blot with 16015-1-AP (MMS19 antibody) at dilution of 1:500 incubated at room temperature for 1.5 hours.



Immunofluorescent analysis of (4% PFA) fixed HeLa cells using 16015-1-AP (MMS19 antibody) at dilution of 1:50 and Alexa Fluor 488-conjugated AffiniPure Goat Anti-Rabbit IgG(H+L).