

À des fins de recherche uniquement

# Anticorps Polyclonal de lapin anti-TXNDC4



Numéro de catalogue: 16016-1-AP

Phare

5 Publications

## Informations de base

Numéro de catalogue:

16016-1-AP

Taille:

150ul, Concentration: 650 µg/ml by Nanodrop and 367 µg/ml by Bradford method using BSA as the standard;

Hôte:

Lapin

Isotype:

IgG

Immunogen Catalog Number:

AG8818

Numéro d'acquisition GenBank:

BC005374

Identification du gène (NCBI):

23071

Nom complet:

endoplasmic reticulum protein 44

MW calculé

406 aa, 47 kDa

MW observés:

44-47 kDa

Méthode de purification:

Purification par affinité contre l'antigène

Dilutions recommandées:

WB 1:1000-1:6000

IP 0.5-4.0 ug for IP and 1:500-1:1000 for WB

IHC 1:500-1:2000

IF 1:10-1:100

## Applications

Applications testées:

IF, IHC, IP, WB, ELISA

Demandes citées:

CoIP, IF, IHC, WB

Spécificité de l'espèce:

Humain, souris

Espèces citées:

Humain, souris

**Remarque-IHC: il est suggéré de démasquer l'antigène avec un tampon de TE buffer pH 9,0; (\*) A défaut, le démasquage de l'antigène peut être effectué avec un tampon citrate pH 6,0.**

Contrôles positifs:

WB : cellules HepG2, cellules HeLa, cellules K-562, cellules MCF-7

IP : cellules K-562,

IHC : tissu de cancer du sein humain,

IF : cellules HeLa,

## Informations générales

TXNDC4 is also named as KIAA0573, ERP44, PDIA10, ERp44 and belongs to the thioredoxin family (TRX). It may be involved in electron transport, protein folding, response to unfolded protein, glycoprotein metabolism, secretory pathway. It may have a role in the control of oxidative protein folding in the endoplasmic reticulum.

## Publications notables

Autrice	Pubmed ID	Journal	Application
Tian Xia	34493236	BMC Cancer	WB, IHC
Tiziana Anelli	34651407	Traffic	WB
Anelli Tiziana T	21854214	Antioxid Redox Signal	WB, IF

## Stockage

Stockage:

Stocker à -20°C. Stable pendant un an après l'expédition.

Tampon de stockage:

PBS avec azote de sodium à 0,02 % et glycérol à 50 % pH 7,3

L'aliquotage n'est pas nécessaire pour le stockage à -20C

\*\*\* Les 20ul contiennent 0,1% de BSA.

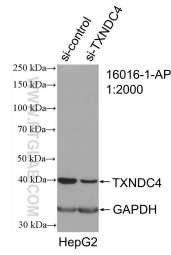
For technical support and original validation data for this product please contact:

T: 1 (888) 4PTGLAB (1-888-478-4522) (toll free in USA), or 1(312) 455-8498 (outside USA)

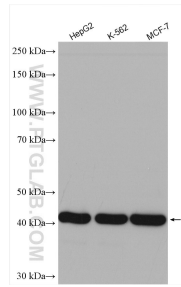
E: proteintech@ptglab.com  
W: ptglab.com

This product is exclusively available under Proteintech Group brand and is not available to purchase from any other manufacturer.

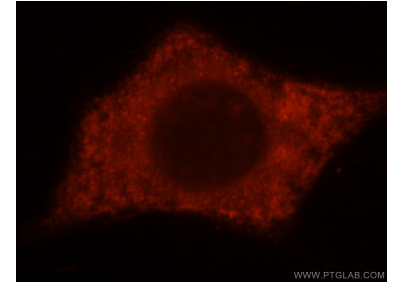
## Données de validation sélectionnées



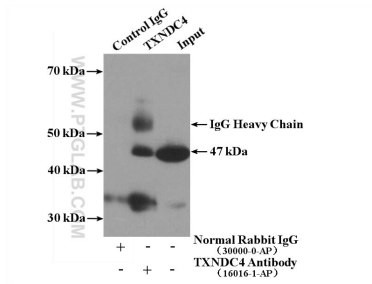
WB result of TXNDC4 antibody (16016-1-AP; 1:2000; incubated at room temperature for 1.5 hours) with sh-Control and sh-TXNDC4 transfected HepG2 cells.



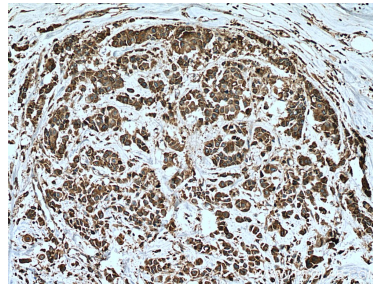
Various lysates were subjected to SDS PAGE followed by western blot with 16016-1-AP (TXNDC4 antibody) at dilution of 1:3000 incubated at room temperature for 1.5 hours.



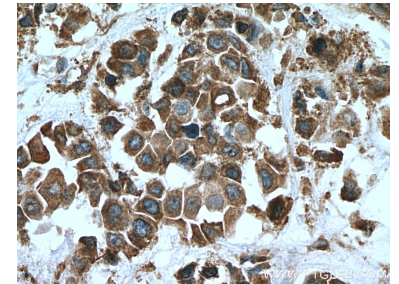
Immunofluorescent analysis of HeLa cells, using ERP44 antibody 16016-1-AP at 1:25 dilution and Rhodamine-labeled goat anti-rabbit IgG (red).



IP Result of anti-TXNDC4 (IP:16016-1-AP, 4ug; Detection:16016-1-AP 1:500) with K-562 cells lysate 4000ug.



Immunohistochemical analysis of paraffin-embedded human breast cancer tissue slide using 16016-1-AP (TXNDC4 antibody) at dilution of 1:1000 (under 10x lens). Heat mediated antigen retrieval with Tris-EDTA buffer (pH 9.0).



Immunohistochemical analysis of paraffin-embedded human breast cancer tissue slide using 16016-1-AP (TXNDC4 antibody) at dilution of 1:1000 (under 40x lens). Heat mediated antigen retrieval with Tris-EDTA buffer (pH 9.0).